

# THE EDEN ISLANDER

VOL VI, No 5

SEPTEMBER/OCTOBER 1993

FREE



## A LETTER FROM THE PRESIDENT

In the last Islander issue, an article was inserted thanking John and Debra Kreeger for the work they had done in restoring their home. However, the hyperbole used to show the extent of their accomplishment was a poor choice of words. For the grievances we may have caused them, we apologize. The thanks and good will intended by the article still stands.

Coming up next month is our annual Fishing Rodeo to be held at TK's Boater Service Center on Saturday and Sunday Oct. 9 & 10th. For this to be a super success we will need volunteers to help. Please read the articles within this issue and call the person(s) listed in the area that you wish to help.



Sid Menard

Much thanks to Pam White and her GREENFORCE Committee for all the changes of the gardens on the Boulevard. If you like what you see, want to see more, and have not made your donation to GREENFORCE this year, please send your \$35 check to Eden Isles Homeowners'

Association, P.O.Box 2746, Slidell, LA. 70459. The GREENFORCE fund needs to be rebuilt to do more this year.

At the next meeting, nominees to fill four expiring seats on the Board of Directors will be accepted from the floor, to be voted on at the November meeting. If you are interested, please have someone place your name into nomination.

We would like to welcome Bill Northup from Blackfin Cove to the Board of Directors, replacing the resigning Marty Houston. Bill brings new energies and young ideas to the Board.

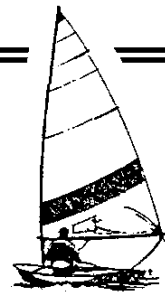
Our next meeting will be Tuesday Sep. 28th at 7:00 PM at the Tammany Yacht Club, above the Marina Cafe. I look forward to seeing you there.

*Sid Menard*

**GENERAL MEMBERSHIP MEETING OF THE  
EDEN ISLES HOMEOWNERS' ASSOCIATION**

**Tuesday, Sep. 27, 1993 at 7:00 PM**

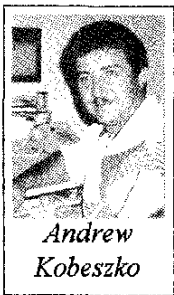
**Tammany Yacht Club**



# Remarks

by **Annemarie Furphy**  
and **Andrew Kobeszko**,  
Editors

Increased circulation and the rising costs of printing and distribution have taken their toll on the Islander budget. Funds from advertising do not cover the printing and mailing expenses. However, the Islander continues to be distributed free of charge to each resident of Eden Isles, the difference in costs being absorbed by the Homeowners' Association.



Andrew  
Kobeszko

We are in the process of updating the Islander, making it more attractive to both its readers and potential advertisers. In the July/August 1993 issue we reorganized the format and added graphics. This issue boasts additional improvements and more efficient use of space.

We have removed the membership application. If you need one, you can find it in the Eden Isles Directory. It will be published once a year for easy and convenient renewal of membership. The "Need a Babysitter?" listing will be replaced with a services listing. We encourage the youth of our community to list their services, including babysitting, lawn maintenance and odd jobs, free of charge. Look for the response form elsewhere in this issue if you wish to be included in the November/December 1993 issue and issues throughout 1994.

This page will be devoted to the friendly exchange of ideas between neighbors. We invite your participation and encourage you to write us with your problems, praises, opinions, suggestions and ideas. After all, the Eden Islander is your newsletter. We want you to be a part of it. Of course, limited space will prevent us from printing all letters and we will continue to maintain the integrity of this publication by selecting letters and articles that would be of interest to all

residents. By the way, we still need a title for this column...any ideas?

Starting with this issue, articles will be accompanied by a photograph of the contributor. This is an effort



Annemarie  
Furphy

to familiarize our readers with their neighbors, encourage the exchange of ideas and unite our community

We would gladly welcome someone to enhance these pages with illustrations and humorous cartoons. If your talents are in this area, we are asking you to consider sharing your time with us, and your neighbors.

We hope to make the Eden Islander a publication that we can all be a part of; a publication we can all be proud of.

Now Open  
Sunday's  
Noon-6pm



featuring

Our Full Menu & Specials of the Day  
Complimentary Mimosa  
For Your Listening Pleasure Sunday 1-4pm  
ENJOY THE SOUNDS OF  
**Missi & Ray of  
WITNESS**

"The Restaurant with the Best View on the Northshore"  
4427 Pontchartrain Dr. Slidell  
641-2099

**THE EDEN ISLANDER**

A bi-monthly publication of the  
EDEN ISLES HOMEOWNERS' ASSOCIATION  
P.O. Box 2746 Slidell, LA 70458

G. Sydney Menard, President

Annemarie Furphy & Andrew Kobeszko, Editors

Advertising available -- for rates and availability call Annemarie Furphy at 641-9138

Circulation: 1,000

# HAVE WE GOT A PROGRAM FOR YOU!!!

Tuesday Evening, September 28, 1993 at the Tammany Yacht Club at 7:00 PM. (Note new meeting time!)

**SPECIAL GUEST SPEAKER: LOUIS P. BAUER,**

Certified Clinical Hypnotherapist

Dr. Bauer has spoken extensively to many companies and organizations and has given many programs at Slidell Memorial Hospital. In his private practice and workshops, he has helped many people heal themselves of acute and chronic problems. Dr. Bauer will explain hypnosis and help us understand its therapeutic value in relieving stress, eliminating anxiety, overcoming depression and building self-control and self-confidence. Learn how hypnotherapy can be an effective method of overcoming self-destructive habits such as smoking and over-eating. Come early...seating is limited.

ALSO: Refreshments, door prizes, 50/50 raffle and a chance to meet your neighbors!

**EVERYONE WELCOME**

## EDEN ISLES COAST GUARD AUXILLARY

by Evelyn Nelson  
FSO-PA



The Eden Isles Coast Guard Auxillary Flotilla is presently giving a boating safety course to the general public. The classes started on **September 14th**. The duration of the classes will be six weeks. The classes will be held at Tammany Yacht Club in above the Marine cafe.

If you would like to attend the class you can make up the first one or two classes. For more information call Joe Milczarek at 863-3475 or Brad Carey at 649-6884.

**GG PRINTING**

**649-4305**

2137 First St.  
Slidell, LA 70458

## SPECIAL MEETING POSTPONED

by Marilyn Meier,  
Programs Vice President

At the regular Homeowners' Association meeting on July 27, 1993, the majority indicated a desire to have a special forum in September where the pros and cons of riverboat gambling in our area could be aired. As the Program Chairman, the duty of scheduling this forum and inviting various public officials to speak and/or contribute information, was left to me.

I spoke at length, in August, to our Louisiana Representative, "Pete" Schneider, District 76 representative, Suzanne Krieger, Police Juror, Gary Rinck, and various other individuals who were in Baton Rouge in June when the Riverboat Gaming Commission gave out its remaining licenses. The majority, overwhelming opinion of all was that the issue was "dead" for the remainder of this year, at least until the Legislature re-convenes in March 1994. Because of their convictions that any Eden Isles forum at this time was premature and unnecessary, there was very little interest on the part of these potential guest speakers to attend a public forum now.



When these facts were presented to the Board of Directors, it was decided that it made more sense to postpone any such meeting until riverboat gambling in St. Tammany Parish became a more imminent possibility.

Blue Spruce  
Green Spruce  
Douglas Fir  
Grand Fir

# Mr. G's Christmas Trees

## Free Delivery

Frasier Fir  
Nobel Fir  
Scotch Pine  
Balsam Fir

Open November 25th  
Hours: 9:00 until 10:00



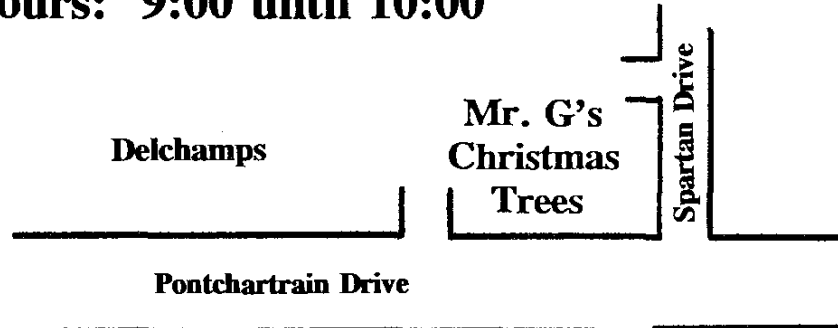
Wreaths



Flocked



Stands



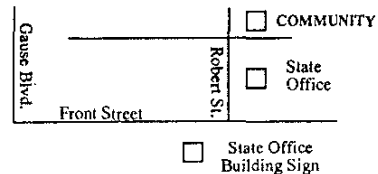
First Baptist Church  
\*Live Nativity

# COMMUNITY FEED & GARDEN, INC.

2320 Carey Street  
(Across from the State Office Building)

**643-5327**

Mike and Rosalie Bruce  
Owners



FERTILIZER • ANIMAL FEEDS • BEDDING PLANTS  
LAWN & GARDEN SUPPLIES • PET SUPPLIES  
AND MUCH MORE!

# ISLANDER INTRODUCES SERVICES LISTING

The *Eden Islander* will be introducing a new feature beginning with the November/December 1993 issue. A Services Listing will replace the "Need a Babysitter?" list, for use by the youth of our community. Any young adult resident, between the ages of 13 and 17, may list his/her service in the newsletter, with parental consent. There will be no charge for the listing and names and/or services may be added and removed throughout the year.

If you babysit, mow lawns, do odd jobs, etc., and wish to be included in the November/December 1993 issue, please complete the brief questionnaire below and forward to Annemarie Furphy, 128 Blackfin Cove, Slidell, LA 70458, by November 1, 1993. All information will be verified prior to publication.

## EDEN ISLANDER SERVICES LISTINGS

Name: \_\_\_\_\_

Address: \_\_\_\_\_

Phone: \_\_\_\_\_

Service Available: \_\_\_\_\_

Days/Time Available: \_\_\_\_\_

Age: \_\_\_\_\_

Parent/Guardian Signature \_\_\_\_\_

*Going on vacation or out of town for the night?*

### We - Watch - It SITTERS

HOUSE - PETS - PLANTS - BOATS

JENNIFER or GARY  
References

643-1982 after 5pm  
or leave message

## END OF SUMMER BLUES

by Bill Northup

It seems like every time I would get ready to go up to TK's for an afternoon of fun, a HUGE thunderstorm would come crashing down and spoil my plans. Why is that? It seems like they wait for Saturday and Sunday everytime!

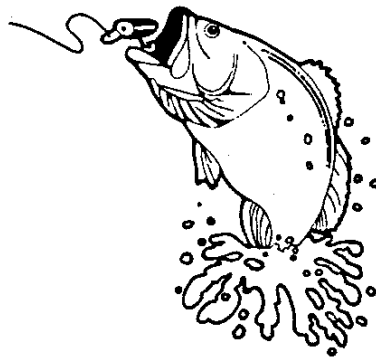
During one really rough one on August 28, I thought the back of my house was going to blow away. It also blew all manner of debris into the canal. I saw what looked like a floating treasure chest coming down Blackfin canal. Some boys in a boat saw it too and they tried to grab it. What they didn't realize of course is that it was really a soggy cardboard box full of styrofoam peanuts. When they tried to pick it up it came apart and deposited inert pop corn throughout the canal which promptly spread out and blew all over creation. I went paddling around on a raft and picked up what I could. An examination of the box label indicated it had blown into the canal a couple of blocks away. These things happen if we don't keep these light things where they won't blow away.



Bill Northup

Another simple thing that I have noticed might help keep some of the grass clippings out of the canal; just let the discharge side of the lawnmower point AWAY from the canal. It's easy.

I have another problem in my backyard that I haven't solved yet. It's also caused by torrential rain. The run off goes back by the bulkhead and sort of tunnels its way down to a drain hole in the bulkhead. After a while, if left unchecked it leaves a huge crater in the yard. What can be done to stop this phenomenon?



Also I would like to mention in this article that the fishing in Blackfin Canal seems to have picked up this summer over last summer. My neighbor has routinely been catching really nice, three pound, BlackDrum from his dock, using dead shrimp. I haven't caught any yet, but I have caught some keeper trout, and this is new for my dock anyway.

# NOMINATING COMMITTEE

seeking nominations for board of directors

by Annemarie Furphy, Chairman

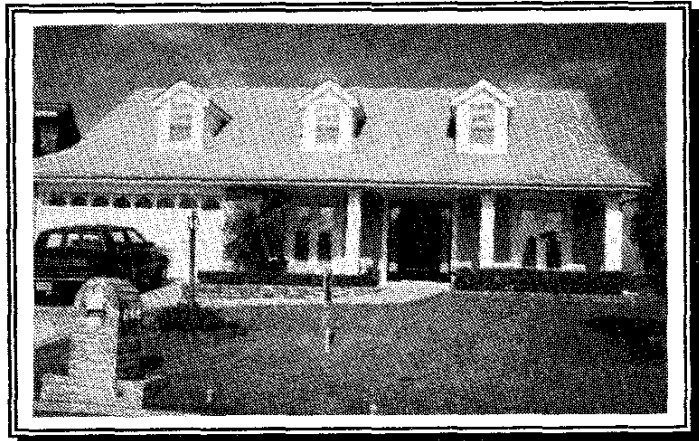


The Eden Isles Homeowners' Association is currently accepting nominations for the Board of Directors. Four positions are available for a term of two years to begin January 1, 1994. Candidates must be association members "in good standing."

Nominations will be accepted from the floor at the General Membership Meeting on September 28, 1993. No further nominations will be accepted from the floor at the November General Membership Meeting. The final date for nominations is November 1, 1993. A slate of candidates and an absentee ballot will be published in the November issue of the Eden Islander. The election will be held at the General Membership Meeting on Tuesday, November 30, 1993.

If you would like to place your name, or the name of a neighbor, in nomination, or if you require additional information, please contact Annemarie Furphy at 641-9138 (daily after 6 pm).

We encourage all residents to consider this opportunity to serve their community. Your input and participation is vital to the betterment of Eden Isles and the growth and success of the Homeowners' Association.



## 208 WINDWARD PASSAGE

- *Acadian, Custom Made*
- *3 Bedrooms, 2.5 Baths*
- *2,667 sq. ft. of Living Area*
- *Fireplace, Luxurious Master Suite*
- *Boathouse with Hoist*
- *Dock, Deck, Professionally Landscaped*

## OPEN HOUSE

SUNDAY, SEPTEMBER 26  
1-4 PM

No matter what the reason: you are interested in a home, you may have a friend who wants to live in the neighborhood, you may be selling your home in the future and want to see a comparable home in your neighborhood, "OR" you may want to see a professional real estate agent in action

NO MATTER WHAT YOUR REASON IS, YOU ARE WELCOME.

LATTER & BLUM  
INC./REALTORS®

641-1000



BETH  
KOBESZK  
641-4869

# 1993 FISHING RODEO IN THE WORK

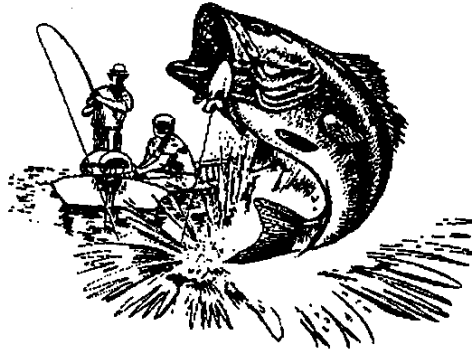
by **Tammy Austin**

Hi everyone! Well, it's that time of year again. That's right...it's time for our annual fishing rodeo and poker run. Preparations are diligently being made for this upcoming event.

The rodeo is scheduled for **October 9th and 10th** with the poker run to be held on October 9th. The cost is \$60 per hand. You may enter as many times as you wish. A free t-shirt will be given to everyone who purchases a hand.

The entry fee to fish is \$3. Tickets can be purchased in advance at the Eden Isles Hardware Store and Car Wash or a TK's Boater Service Center. We will have saltwater and freshwater categories in both adult and children divisions as well as a scuba division. First and second place trophies will be awarded. Everyone who enters the rodeo will be eligible for door prizes. We will also have many nice prizes which will be raffled and several prizes that will be auctioned.

The scales will be opened from 2:00 pm until 5:30 pm on Saturday and from 12 noon until 4:00 pm on Sunday. All



prizes and trophies will be awarded at 5:00 pm on Sunday. During these two fun filled days, various foods and beverages will be available to be purchased.

On Saturday, October 9th, a DJ is scheduled to play from 3:00 pm until 7:00 pm. Live entertainment will follow with **BOBBY MARX & THUNDER** at 7:00 pm on Saturday. For those of you who have not heard them yet, you are in for a real treat. On Sunday, **LOCAL OPTION** will play for our enjoyment.

I would personally like to encourage you to come out and support this worth while event. Along with enjoying the food, fun and music, you will be contributing to the physical improvements being made in your subdivision.

If anyone is interested in volunteering their time for this event, please give me, **Tammy**

**Austin**, a call at **641-6244**. If you are interested in serving in the food tent or selling food and beverage tickets, please contact **Peggy Menard** at **649-3555**.

We look forward to seeing you there. Until then...**HAPPY FISHING!!!**

## HAPPY DAYS

### Again

Slidell's Newest Nightclub for Live Entertainment

50's - 90's Rock & Country

Live Entertainment

Every Fri. & Sat. • 9:30 p.m. - 2:00 a.m.

Newly Remodeled

Large Dance Floor

Tuesday

Mexican Fiesta

Margaritas, Corona, Jose Cuervo

Wednesday

Pool Tourney

Thursday

Ladies Night

Football Games

\$1.25 Longnecks  
Big Screen TV

**HAPPY HOUR** 2:00 p.m. - 7:00 p.m. Monday - Friday

**OPEN** Mon.- Fri., 2:00 p.m. - 'til • Sat., 7:00 p.m. - 'til • Sun., All Saints TV Games

3401 Pontchartrain Drive  
Slidell, LA

649-0692



# E.I.H.O.A.

October 3 - December 4, 1993

SUNDAY	MONDAY	TUESDAY	WEDNESDAY	THURSDAY	FRIDAY	SATURDAY
Oct 3	Oct 4	Oct 5	Oct 6 GARDEN CLUB MEETING	Oct 7	Oct 8	Oct 9 EIHOA Fishing Rodeo/Poker Run
Oct 10 EIHOA Fishing Rodeo	Oct 11 Columbus Day (Observed)	Oct 12	Oct 13 Coast Guard Aux Meeting TYC 7:30pm	Oct 14 E.I.H.O.A. BOD MEETING 7:30PM	Oct 15	Oct 16 VOTE
Oct 17	Oct 18	Oct 19	Oct 20	Oct 21 POLICE JURY MEETING 4PM	Oct 22	Oct 23
Oct 24	Oct 25	Oct 26	Oct 27	Oct 28	Oct 29	Oct 30
Oct 31 Daylight Savings-set back 1 hour Halloween	Nov 1 BOD Nominations Due	Nov 2 Election Day	Nov 3	Nov 4	Nov 5	Nov 6
Nov 7	Nov 8	Nov 9	Nov 10 Coast Guard Aux Meeting TYC 7:30pm	Nov 11 E.I.H.O.A. BOD MEETING 7:30PM Veterans Day	Nov 12	Nov 13
Nov 14	Nov 15	Nov 16	Nov 17	Nov 18 POLICE JURY MEETING 4PM	Nov 19	Nov 20
Nov 21	Nov 22	Nov 23	Nov 24	Nov 25 Thanksgiving	Nov 26	Nov 27
Nov 28	Nov 29	Nov 30 HOMEOWNERS MEETING TYC 7PM	Dec 1	Dec 2	Dec 3	Dec 4



# IMPORTANT REMINDER

by Marilyn Meier

A special election will take place on **Saturday, October 16, 1993**, for all registered voters in the State of Louisiana. A lot is at stake because six Constitutional amendments will be on the ballot. Three of them may effect the way the legislature does business, or at least make it difficult for them to continue to build debt and approve "pork barrel" projects. One amendment limits the legislature's ability to create more debt through bond sales; another would require feasibility studies before a construction project could be approved and paid for through 20 year bond sales, and yet another would require that surplus funds be used only to retire state debt early.

Unfortunately, there are no major offices -- U.S. or statewide -- to bring voters to the polls. Some of these Constitutional amendments, if passed, could be the beginning of State government reform. Your vote is important.

The only other item on the ballot affects the Eden Isles/Oak Harbor area. A 10 year millage for the purpose of supporting the St. Tammany Parish Health Center and related activities, including construction and renovation, is up for renewal.

We urge you to take a few minutes on Saturday, October 16, 1993 to review the amendments and the issues and VOTE.



**25% Off Fabric**

**CUSTOM DRAPES**

**BEDSPREADS**

**60% OFF Mini Blinds**

*Measured & Installed*

**FREE**

**Headboards**

**Valances**

**Boat Interiors**

**DORAND'S  
Drapery & Upholstery**

EDEN ISLES

641-2581

# AUTO SUR



FORMERLY ASSURNET



CAR



MOTORCYCLE



MOBILE HOME

**AUTO • HEALTH • HOME**



BUSINESS



TRUCKS



HOME

- LOW DOWN PAYMENT AVAILABLE • AUTO • HOME • HEALTH
- LIFE • DENTAL • MOTORCYCLES • BOATS • TRUCKS
- MOBILE HOMES • FIRE • BUSINESS
- SR22'S FILED IMMEDIATELY
- AUTO TITLE TRANSFER
- DISCOUNTS FOR GOOD DRIVERS
- CONVENIENT MONTHLY PAYMENTS

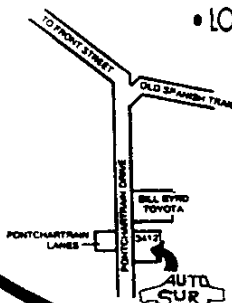
See Mike Sims,  
your AutoSur agent

CALL US

# 649-2886

OFFICE HOURS -  
MON - FRI 9 AM - 6 PM  
SATURDAY 10 AM - 2 PM

3412 PONTCHARTRAIN DR.



# GREENFORCE

## REPORT

by Pam White, Chairman



A busy summer is drawing to a close, and we hope you have noticed the results of the labor. Neutral grounds have been maintained by hardworking volunteers, and almost half of the flower beds on Eden Isles Drive have been replanted with low maintenance shrubs that should not interfere with a driver's visibility. Peggy Menard has worked hard to get the Highway 11 guardhouse in shape, and plans are being made to rework the flower bed around the anchor. We even have paint to start repainting street signs.

Eden Isles is shaping up, and we have lots of ideas to make things even better. But, we need volunteers...the more people we have, the less work needed from each person. Please consider what you could do to help. We need someone to mow two small neutral grounds on Souther Star. Volunteers to help keep the replanted flower beds weeded would

be very much appreciated -- ten minutes a week in one flower bed would prevent it from ever deteriorating to the state the old beds are in. If you can handle a paintbrush to repaint the street sign on your street, we'll supply the paint. Any effort is appreciated.

And of course, cash donations are accepted and appreciated. I guarantee you that your contribution will be put to good use. If you have not yet contributed for the 1993 year, checks made out to the **Eden Isles Homeowners' Association - GREENFORCE** can be mailed to P.O. Box 2746, Slidell, LA 70459.

If you are interested in volunteering or would like to hear more about what we would like to accomplish, call me, Pam White, at 649-7214. With your help, we can make Eden Isles a beautiful place to live.

## SECURITY UPDATE

by Marilyn Meier

All 51 new street lights are now operating, and what a difference they make! These new ones are 100 watt high pressure sodium as opposed to the old 175 watt mercury vapors, and they sure do provide a lot of light. Hope you all enjoy this major improvement throughout Unit IV. Remember, if a street light is not working near your home, please call CLECO and report it.

The Security Service is in need of a volunteer accounts receivable/payable bookkeeper who is detail oriented and well organized. Alice Rhodes is no longer able to fulfill this commitment. Traditionally, the people who volunteer and work on the Security Service Committee have always come from the ranks of its supporters and we feel an obligation to continue this practice. Please call me if you can help.

Also, to our old and new security subscribers: we need and welcome your feedback about the Guard Service. Write or call if you have a question or comment. Your input is as vital as your monetary contribution.

For the benefit of our many new residents and as a reminder for the "old-timers," we take this opportunity to list the following ordinances which are most often violated by residents:

1. Signs or notices about garage sales, parties, lost animals, etc. are **ILLEGAL** if placed on Parish property, such as STOP signs, light poles or street signs. If you do put up a sign, PLEASE take it down within three days so it doesn't become an eyesore on someone's lawn or in our streets. The bulletin board at the Highway 11 entrance is for use of individual residents **ONLY** and no commercial advertisements or notices are allowed.

2. The legal "no parking" zone in front of hydrants is 15 feet in either direction. If access to hydrants is blocked by parked vehicles, the Fire Department will not hesitate to break car window in order to get their hoses through, should the need arise.

3. On the subject of parking: "no trucks, trailers, boats, campers nor non-operative automobiles shall be parked on any lot or public street for a period of more than 48 hours."

Your neighbors and the entire community will appreciate your compliance -- thereby helping us keep the subdivision an attractive and desirable place to live.

# DON'T READ THIS...

...unless you care about your property

by **Beth Kobeszko**



There are many factors that influence our property values. In the last "Don't Read This...", I discussed the effect of surroundings on property values. This time I would like to elaborate on another aspect: **local businesses.**

Just think of all the times you've had to drive to the other end of town, wasting time and fuel, to buy a simple item. Neighboring stores and services are not only a convenience, but have a direct effect on the popularity of the area and indirectly affect the property values.

Currently, we cannot boast a very developed commercial zone. Therefore, the few businesses located on Pontchartrain Drive should become the "apple of our eye". Your support of worthy businesses will ensure their prosperity and their success will encourage other businesses to set-up



shop close to our community. The end result: We won't have to go far to do our shopping and our property values increase.

Many of the local businesses, by advertising in our newsletter and directory, are actively sustaining our Homeowners' Association and are therefore contributing to the development of Eden Isles. Their support allows the Association to distribute the newsletter and directory to all residents without charge and helps fund special events, such as the upcoming Fishing Rodeo and Poker Run.

So support local businesses -- it's in your best interest. Show them that they count!

**24-hour Service**  
**566-4105**  
28 Years of Experience



**We Service All  
Makes and Models**

Commercial

**AIRCO**  
**AIR CONDITIONING • HEATING • INC.**

Residential

**Home Phone 646-0602**  
**Roy Bellinger**

**Jerry Boudreaux**

# WELCOME ABOARD

The Eden Isles Homeowners' Association wishes to welcome the following residents and their families who have recently moved into our community:

David Anderson  
Becky Black  
Robert Bradford  
Donnie Bush  
Ien Caley  
Anne Campo  
Monica Chason  
W. L. Courrage  
William Di Salvo  
Raymond Duplessis  
Scotty Eymard  
Keith Freese  
Donna Gentile

Donald Hammond  
Debbie Hatcher  
Carol Kahoe  
Scott Leonard  
David Midkiff  
Jack Morgani  
Anita Rock-Faucheux  
Bruce Taylor  
Lloyd Theard  
Luis Tonizzo  
C. A. White  
Fred Zeile

## WELCOMING COMMITTEE REPORT

by Beth Kobeszko



Lately, newcomers had not been receiving Eden Isles telephone directories in their welcoming packets. This is due to a shortage of last year's edition. The current book, which will be sent to all residents free of charge, should be out by the end of the month. Along with the phone lists, there will be an advertising section.

While working for the Welcoming Committee, I noticed that many Eden Isles residents own businesses. Although this year's book is closed for printing, you might consider advertising in next year's edition or in our newsletter. Special benefits and discounts (details of which are still to be worked out) await those of you who do.

I would like to thank Carmen Gallagher for coming to our aid and volunteering for the Welcoming Committee. If anybody else would like to help, please contact me at 641-4869.

COME SEE WHAT ALL THE

EXCITEMENT IS ABOUT!



## Krewe of Flora

NEXT MEETING

WEDNESDAY, SEPTEMBER 29, 1993

7:00 AT REC HALL  
Third & Erlanger

*Y*  
OPEN HOUSE TEA  
SUNDAY, OCTOBER 31, 1993

2:00 till 5:00

At The Rec Hall

FOR MORE INFORMATION, PLEASE CALL:

CAROLYN HERRON -- 643 - 7070

CLARA GAMMON -- 643 - 1982

# EDEN ISLES FISHING RODEO 1993



**DATES:** OCT 9TH (12 noon til 11:00pm); OCT 10th (noon til 5pm)

**LOCATION:** TK's BOATER SERVICE CENTER

**FISHING RODEO:** ADULT SALTWATER (6 catagories-2 trophies each)  
ADULT FRESHWATER (5 catagories-2 trophies each)  
SCUBA (4 catagories-2 trophies each)  
CHILD'S SALTWATER (6 catagories-2 trophies each)  
CHILD'S FRESHWATER (5 catagories-2 trophies each)

**REGISTRATION:** Entry Fee: \$3.00  
Prior to Fri Oct 8th - Eden Isles Hardware  
TK's Boater Service Center  
Fri October 8th from 6 p.m. til 9 p.m. at  
TK's Boater Service Center  
SAT October 9th from 9 a.m. til 12 noon at  
TK's Boater Service Center

**POKER RUN:** Sat October 9, 1993 from 12 noon til 5 p.m.  
Registration before Oct 9th @ Eden Isles Hardware  
or TK's Boater Service Center, and at  
TK's Oct 9th from 9 a.m. til 12 noon.  
Entry Fee: \$60 per hand (includes free T-Shirt)  
PICK UP CARDS AT 5 DIFFERENT WATERFRONT LOCATIONS  
1st Place \$1000; 2nd Place \$250; 3rd Place \$100.

**ENTERTAINMENT:** Saturday from 3:00 p.m. til 7:00 p.m. ---- D J  
Saturday from 7:00 p.m. til 11:00 p.m.---- Band  
"BOBBY MARX AND THUNDER"  
Sunday from 1:00 p.m. til 5:00 p.m. ----- Band  
"LOCAL OPTION"

**RAFFLE & AUCTION:** Various items will be raffled & auctioned Sun  
October 10th at 5 p.m.

**FOOD & BEVERAGES:** Various food and beverages will be available.

**RODEO SPONSORED BY EDEN ISLES HOMEOWNERS ASSN AND ADMINISTERED BY  
RODEO COMMITTEE OF EDEN ISLES HOMEOWNERS ASSN. ALL PROCEEDS ARE  
NON PROFIT AND TO BE USED FOR PHYSICAL IMPROVEMENTS WITHIN EDEN  
ISLES SUBDIVISION.**

**INFORMATION:** Eden Isles Hardware 641-9502  
TK's Boater Service Center 649-3320  
Tammy Austin 641-6244

# THE EDEN ISLES SPECIALIST

BETH KOBESZKO



WHETHER YOU'RE LOOKING FOR A HOME TO BUY OR PLANING TO SELL YOUR PRESENT ONE, YOU DESERVE THE HELP OF A TRAINED AND DEDICATED REAL ESTATE PROFESSIONAL LIKE MYSELF.

CALL ME TODAY FOR YOUR FREE  
MARKET VALUE ANALYSIS

641-4869 OR 641-1000 ext. 261

LATTER  
& BLUM  
INC/REALTORS®



PICK THE BEST. I'LL DO THE REST.

THE EDEN ISLES HOMEOWNERS' ASSOCIATION  
P.O. Box 2746  
Slidell, Louisiana 70459

BULK RATE  
U. S. POSTAGE  
PAID  
PERMIT #63  
SLIDELL, LA

