



THE EDEN ISLANDER

Vol. 2, No. 9

SEPTEMBER 1989

FREE

SEA EXPLORES SHIP 1

Ship 1 is alive and well. The past year's activity has centered around sailing. Several donated boats were made Ship-Shape, sailing skills honed and there are now 2 active sailing crews. The vessel SEA Explorer is currently undergoing a survey and an intense maintenance repair program is underway. Equipment, expertise and workers are needed in many areas; you can call 649-2121 if you would like to help.

There is space available for interested teens aged 14-19 (boys & girls) to join the ship and regular meetings and training sessions will resume this fall. Fund raising is ongoing at several levels and monetary contributions (tax deductible) always welcomed. The scouts will be in the area sometime in September selling Ship 1 cook books. For \$5.00 you'll get a local collection of recipes and help the ship.

Fair winds and following seas to you all

NOVEMBER ELECTION COMING UP

The Eden Isles Community Services District will have a plan on the November ballot to support security and grass cutting through a tax structure. If you are for or against the plan you must vote to make your wishes known. Don't let someone else decide for you, exercise your right and VOTE!

EDEN ISLES/OAK HARBOR INTERCHANGE

It looks like October before the new interchange will open. The state is in the process of putting on a coat of black top on the interstate to make the levels match. By the way, for those who try to use the road before it opens, you will be ticketed if caught.

LAWN AND GARDEN TIPS FOR SEPTEMBER by Diane Liuzza Gardens of Eden Garden Center

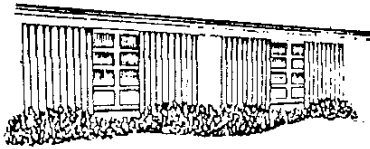
Trees can help you save on energy bills. By the effective use of trees you can save considerable money on energy costs. For example, by planting trees particularly on the west side and all around the house, they block the sun and keep it from heating up the house. By planting deciduous trees - trees that lose their leaves in winter, the sun's heat will work for you in winter by helping to heat the house.

This summer and fall we are being plagued with a multitude of insects. This is directly due to the fact that we have had a mild winter. The insect population has soared because of this. Crepe Myrtles especially have been hard hit mainly by aphids and white fly. Fall is usually the worst time of the year for these pests, so we should be aware of this.

APHIDS are found mainly on young tender shoots. These are small green plant lice. Control with Malathion or Diazinon.
BAGWORMS on junipers - looks like a bundle of twigs hanging by a string. Control with Dursban or Malathion.
BORERS - look for small holes in tree trunks or sawdust at the base of trees. Control with Lindane or Thiodan.
RED SPIDER - on Roses - leaves are a mottled color. Control with Kelthane.

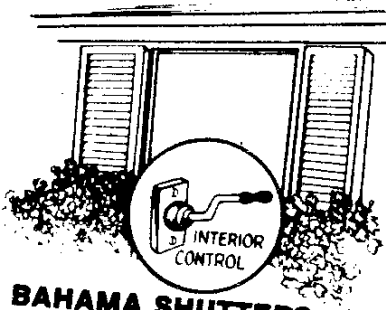
NEW FLAG FOR EDEN ISLES

Major John Getts, 401 Windward, donated a brand new American Flag to Eden Isles. He and others were tired of looking at the frayed and worn old one.



Accordion Shutters

1. Hurricane Protection
2. Transforms A Porch Into An Extra Room.



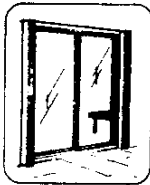
BAHAMA SHUTTERS

Storm would lead many to evacuate, survey indicates

The hurricane season runs June 1 to Nov. 30. "Southeastern Louisiana is very prone to hurricanes, and if you look at areas along the Gulf of Mexico and along the Atlantic Coast, the area with the most severe risk is the New Orleans area," Berrival, of Baton Rouge, said.

AS PRINTED IN TIMES-PICATONE 5/12/84

Folding Aluminum Shutters



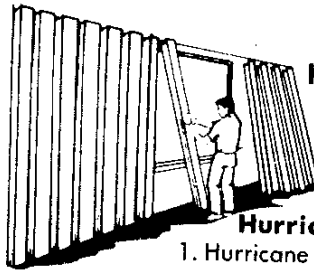
STORAGE POSITION



YOU CLOSE WITH EASE

TOTAL PROTECTION

With Cool-Vue's Complete Line Of High Performance Hurricane Protective and Decorative Shutters.



HURRICANE PANELS

- Hurricane Panels**
1. Hurricane Approved
 2. Adds Value to Your Home
 3. Helps Add Security



Enjoy New Peace of Mind

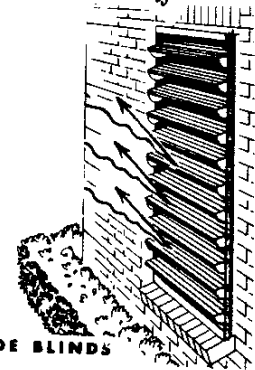
"A Unique Shutter Concept Offering Multiple Benefits"

- BURGLARY PROTECTION
- HURRICANE PROTECTION
- REDUCE ENERGY COST
- LIGHT CONTROL
- COMPLETELY CONTROLLED FROM INSIDE YOUR HOME

CUSTOM MADE ANY SIZE.
FREE ESTIMATES — NO OBLIGATIONS

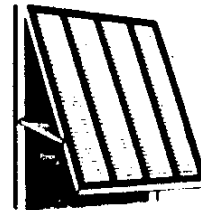
WASHINGTON — The threat of violence to Americans, from the president to the ordinary citizen, is as real as in the era of political assassinations and big-city riots, a group of crime scholars said Sunday.

AS PRINTED IN TIMES-PICATONE 3, 4, 15



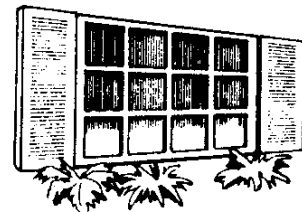
OUTSIDE BLINDS

1. Keeps your Home Cool
2. Keeps Out the Rain



BAHAMA AWNINGS

1. Helps Conserve Energy
2. Hurricane Protection



HINGED COLONIAL

CALL---BOB BOURGEOIS

641-5685

YOUR EDEN ISLES NEIGHBOR

943-3310

831-2665

COOL-VUE ALUMINUM

Established 1945

FULLY INSURED

2008 ST. FERDINAND

"WE KNOW OUR BUSINESS"



SAFETY

by
Robert F. Lazar, Safety Chairman

Have you and your family met EDITH yet?

EDITH saves lives and stands for EXIT DRILLS IN THE HOME.

We all know about emergency exit drills in schools and the workplace, however, most lives lost to fire happen in the home. The home is where the greatest need is now.

1) In addition to smoke detectors, have an escape plan in your home. Discuss what to do in case of fire in your home with your family members. Organize an escape plan.

2) Always know two ways out from every room, including bedrooms and hallways. Diagram, if necessary, to help children understand.

3) Learn how to unlock doors quickly in the dark. Many children and some adults fumble and lose precious time in an emergency. This includes windows, remember.

In two-story houses, make sure everyone can get out of windows, including small children and the elderly. Escape rope-type ladders can be very useful, but you should practice with them. It is no time to learn how to use them in a panic exit at night.

5) Always get out fast. If smokey, stay low; crawl fast. Once outside, go to the prearranged meeting place - a tree, the driveway, wherever, as long as all of the family knows to gather there.

6) Never go back in. Smoke and the gases of combustion kill quickly. A small fire can kill while doing very little damage to the property.

SAFETY (continued)

7) Have the prearranged meeting place so you can be sure everyone got out. Without this plan, people will panic and re-enter to "rescue" someone already out. Take a rollcall of who is there.

8) If trapped, close the door between you and the smoke. Stuff the door cracks and cover vents. Wait at an open window and signal with a flashlight or sheet. Teach your children to do this. Never hesitate to throw a chair through the window. Children are reluctant to do this.

9) PRACTICE EDITH! Practice a fire drill twice a year. Appoint one member to monitor and time the drill. Always start from the bedrooms, where most fire fatalities occur.

10) Crawl low and keep in contact with the wall. It is very easy to get disoriented in a smoke-filled room.

11) Test a door before opening. If hot to the touch, use the second means of exit. If cool, brace your shoulder against it and be ready to slam it shut if the heated air forces it open.

12) Call the fire department after you and your family get out. Property can be replaced, lives cannot. To call the fire department, dial 643-4242 and give the full address including subdivision.

FACTORY AUTHORIZED SERVICE

FORCE
Outboards

SERVICE

Johnson

OMC

merCruiser

EVINRUDE

MERCURY
OUTBOARDS

MAC'S MARINE, INC

Bayou Liberty Road on Bayou Bonfouca

(504) 643-7525

★ NEW & USED ★
★ BOAT SALES ★



PADDLEBOATS, ROWING DINGYS
MINI BASS BOATS IN STOCK

- Slip Rentals
- Fuel Dock
- On Water testing
- Brokerage
- Service Calls
- Two Certified Mechanics

EVINRUDE

NORTH SHORE MARINE

4838 PONCHARTRAIN DRIVE HIGHWAY 11 SLIDELL, LOUISIANA 70458

CHANGING YOUR LOWER UNIT OIL

by Louis Madere

NORTH SHORE MARINE

Regardless of whether you have a outboard or stern drive you must be concerned with maintaining that part of your engine that lives - at least part time - in the water the lower unit. Keeping your lower unit in top shape is quite simple, and for most boat owners, a seasonal operation. Anyone with a smattering of mechanical ability and some free time can do the work.

First remove oil drain/fill plug (lower plug) and oil level plug (upper plug) from side of gearcase. With motor in normal running position, allow oil to drain completely. Milky oil indicates the presence of water probably due to a defective seal. There's no point in proceeding further until its replaced.

To refill, place tube of gearcase lube (check your owner's manual for capacity and lubricant specifications) in drain/fill hole, with motor in normal running position, fill until lubricant appears at oil level hole, note some stern drives have a top mounted dipstick instead of the level plug. Be sure to replace the washer or "O" ring on both plugs.

Install oil level plug before removing lubricant tube from oil drain/fill hole. Drain/fill plug can then be securely installed without oil loss.

Another important maintenance item is the propeller shaft, every six (6) months the propeller should be removed and the splines on the propeller shaft should be greased with a anti-corrosion, water resistance marine grease.

"Dentistry With An Air of Gentleness"



BETTY H. ALTMAN, D.D.S.

DAVID J. HILDEBRANDT, D.D.S.

1400 Old Spanish Trail
Slidell, La. 70458
643-6620

We accept



OFFICE HOURS
Monday through Saturday

Low Cost
No Contract

Slidell # 643-7437

Pro's Pest Control Service

Environmental Specialists
Servicing 4 Parish Area

147 Eden Isles Dr.
Slidell, LA 70458

Full Service Available
Roy Provenzano - Owner

"FOR A CHANGE GET YOUR MONEY'S WORTH"

566-4105



Service all
Makes & Models

18 Years of Experience

Commercial



Residential

Home Phone #

Roy Bellinger

646-0602

Jerry Boudreaux

* O'CONNOR FINANCIAL PLANNING, INC. *

* A Registered Investment Advisor. *

* "We believe the
* personalized services
* of an independent
* certified financial
* planner will help
* you make the most
* efficient use of
* your income and
* assets." *

Specializing in:

- Comprehensive Financial Planning
- Retirement Planning
- Business/Employee Benefit Plans
- Tax Advantaged Investments
- IRA'S

Tom O'Connor, CFP
104 Village Street
Slidell, LA 70458

(504) 643-2802

Investacorp: *Broker/Dealer*



Now Everyone Can Afford To Have Whiter Teeth!

BETTY H. ALTMAN, D.D.S.

DAVID J. HILDEBRANDT, D.D.S.

1400 Old Spanish Trail
Slidell, La. 70458
643-6620

WHITE & BRITE™

Commonly asked questions and answers concerning this new, revolutionary dental procedure:

Question 1: "Doctor, I've heard so much about many new, cosmetic advances in dentistry. But really, this sounds too good to be true. Does White & Brite™ really work?"

Answer: In a word, yes. White & Brite™ is the answer to the age old question, "Is there anything I can do to whiten my teeth?" For approximately 90% of the patients who would like to have whiter and brighter teeth, what was once only a dream can now become a reality.

Question 2: "How long does the procedure take?"

Answer: This procedure takes only 15 to 20 minutes to start and the patient completes the treatment at home and to their desired degree of whiteness; however, on your first visit, the dentist must prepare you for the procedure and usually a normal one-hour appointment is sufficient. The results are very predictable when the patient follows the instructions to the letter. Most cases can be completed within a two week period, more complicated cases may require a longer period of time. Patients who follow the instructions properly may see results within the first three days of treatment.

Question 3: "If this is such a new procedure, how can I be sure it's safe?"

Answer: Although White & Brite™ is a new product, it is based on the older bleaching techniques that have been in use on teeth for over twenty years. When used properly, these techniques have proven to be extremely safe but overpriced for most people. White & Brite™ is not a bleach but a much milder medication than anything ever used before for this purpose and is priced where every patient can now afford to look their very best with a totally different and easier procedure.

Question 4: "How long will the results last?"

Answer: The procedure can be permanent with occasional and proper maintenance.

Question 5: "Why aren't all dentists using White & Brite™?"

Answer: At this time the demand is such that Omnia International can only supply those dentists who have had a working relationship with all of our preventive medication, infection control products and maintenance appliances that can only be obtained from your professional dental office.

Decalcification & Coffee and Tea Stains
Fluorosis & Decalcification

Tetracycline Blotched & Translucent
Abnormal Dark Yellowing

Call For An Appointment Today

GIVE A HELPING HAND by Diane Liuzza

The Slidell Community Humane Society is a private, non-profit, all volunteer organization funded completely by private individual donations. Its purpose is to eliminate animal cruelty and relieve animal suffering in eastern St. Tammany Parish.

SCHS rescues injured and endangered animals on an emergency basis. All are housed in foster homes, when space is available, until adopted into permanent homes. All foster animals receive necessary medical care as well as vaccinations and spaying or neutering.

Slidell Community Humane Society is currently seeking a donation of land in the Slidell area on which to build an animal adoption facility.

The SCHS receives no city, state, or federal tax dollars to support its activities. These services provided to the community are entirely dependent upon donations and the help of volunteer members. If you would like to help please mail your membership application with your tax deductible contribution to:
Slidell Community Humane Society
P.O. Box 832
Slidell, La. 70459



**MARKS
LAWN CARE**
8 years of lawn and garden care
CUTTING EDGING TRIMMING BLOWING ETC.
Call: 641-2824
DEPENDABLE AND REASONABLE Eden Isles resident

EVINRUDE

September Specials !!!

NORTH SHORE MARINE



"Lower Fuel Prices"

REGULAR GAS (Leaded) 89 Octane
\$1.029 a gal.

DIESEL
\$.819 a gal.

"BOAT SPECIALS"

- 14' Fiberglass Flat Boat with 42" Bottom.....\$1,190.00
- 18' Sea Pro Center Console, all stainless steel hardware, 42 gal. fuel tank, 3 year hull warranty and more.....\$5,600.00

"FISHING TACKLE SPECIALS"

Speckline-Magnum Speck Rig, Twin Jigs 178 oz..... .50¢ ea.

OPEN MON-FRI 9 to 6 PM.....SAT 9 to 3PM

We service Mercruiser,
Evinrude, Johnson,
OMC, Cobra, Sea Drive

646-1718

Quality Bottom Jobs
that last and are
applied correct!!!!

4838 PONTCHARTRAIN DR - ON HWY 11 NORTH SHORE (SLIDELL)

GARDENS OF EDEN

4726 Pontchartrain Drive
Phone 643-3271

*
* FREE LANDSCAPE ESTIMATES *
*

COMPLETE LINE OF

TREES -- SHRUBS -- INDOOR PLANTS

BEDDING PLANTS -- FERTILIZERS

INSECTICIDES -- AND GARDEN PRODUCTS

OPEN 7 DAYS

SINCE 1978

Master Card
Visa

8:30 A.M.

to

5:30 P.M.

Diane Liuzza

Richard Liuzza



GOLDEN PALACE
CHINESE CUISINE

Luncheon Special

over 21 specials to choose from all served with fried rice choice of egg roll, cho cho or fried won tons

Dinner \$5⁰⁰ off

special family dinner for 2 or more & free fried noodles with this add (expires Sep 30, 1989)

TAKE-OUT AVAILABLE
Open Monday-Thursday 11-9
Friday-Saturday 11-10
Closed Wednesday
OPEN SUNDAY 12-10

646-1802
TAKE OUT# 646-1817

3805 Pontchartrain Dr.
Slidell, Louisiana 70458




NEED A BABY SITTER?

The following residents are available for baby sitting services within the Eden Isles area:

- Danielle Carey 641-1633
- Laura Ison 643-7487
- Wendy Nall 649-4906
- Michelle Vincent 641-0719
- Wendy Leonard 649-2877
- Melissa Herbert 649-6148
- Mary Helen Obryan 649-4262
- Elizabeth Gibson 641-6971
- Denise Drewes 641-0958
- Erin Harris 649-0296
- Sandra Becker 646-0625
- Lara Gallagher 641-8501
- Shawn Verges 649-5315
- Meredith Ellis 847-0106
- Kimberly Rovira 641-1200
- Nina Garcia 641-4205
- Megan MacFarland 641-2148
- Sandy Key 643-8693

(Adult - daytime only)

GARDEN CLUB NEWS

Members of the Eden Isles Garden Club judged the front yards of Eden Isles and Moonraker for July and the first place winners were the Rabalaise at 178 Pebble Beach, second place was given to the Colleys at 146 Moonraker and third place to the Arnolds at 156 Pebble Beach.

For August the judging was done by boat for the back yards in Eden Isles. The first place winners were the Forstalls at 109 Carina Circle, the second place the Wonigers at 440 Charles Ct., and third place the Traiys at 214 Constellation.

Congratulations to all!

Front yards will be judged again the first week of September and October.

The Garden Club meets the first Wednesday of each month September thru May at a Member's residence.

**R & R
CONTRACTORS**

25 Years Experience

Acoustic Ceilings
House Painting
Sheet Rocking

Free Estimates

Residential & Commercial

641-1650 643-5782

THE EDEN ISLANDER

Publisher Eden Isles Homeowners' Assoc.
Editor George Denn (643-3125)
Circ. Manager Norma Hastings (643-1831)

Advertisement Rates:
Business Card \$10.00 issue/\$90.00 year
1/2 Page Ad \$25.00 issue/\$225.00 year
Full Page Ad \$50.00 issue/\$450.00 year

The Eden Islander is published monthly by the Eden Isles Homeowners' Assoc.
100 Eden Isles Dr. Slidell, La. 70458



True Value®



4500 PONTCHARTRAIN DRIVE, SLIDELL, LA 70458 641-9502

24 HOUR SELF SERVICE CAR WASH

*MARINE HARDWARE
MASTER MECHANIC TOOLS
FISHING SUPPLIES
ROD REPAIRS
MARINE PAINTS - VARNISH*

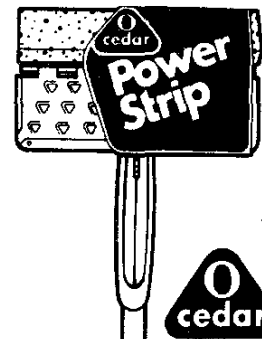
**PROPANE
TANKS
FILLED**

SPECIALS THIS MONTH



3.95
Extra-Large Beach Towel
with colorful True Value logo.
35x60 in. V 470880 F36

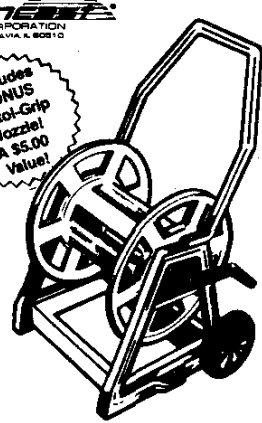
**HARDWARE
VALUE
OF THE MONTH**



4.99 *While
Supplies
Last*

Power Strip[®] Mop cuts through ground-in dirt, is angled for better mopping, and has a cushioned edge! 00201

QUANTITIES LIMITED



Includes **BONUS** Pistol-Grip Nozzle! A \$5.00 Value!

16.88

Hose Reel Cart with Pistol Grip Nozzle L 501536 1

Duplicate Keys Made

George Kendrick, Owner

Hours: MON-FRI 7:30 - 5:30; SAT 8 - 5; SUN 8 - 2

*VISIT OUR WALL PAPER BOOK SELECTION DEPARTMENT
20% DISCOUNT ON ALL ORDERS*