

A Message From *Our President...* **ELIZABETH S. HOFFMANN**

Hello friends & neighbors. First and foremost, a very warm welcome to our much needed paid and new members. Last month I inadvertently used the old membership list that omitted several of the new members and equally as important the wonderful PAID members, again, my deepest apologies.

As I write this message what comes to mind is a reminder that the cool weather is soon to come, hurricane season almost behind us (yahoo) and soon to start, Christmas/Holiday SHOPPING! (Double yahoo). Sure that might be a word you men don't like to hear, but we gals LOVE it. Besides it will surely boost the economy, RIGHT? LOL, I guess that's why I'm not a politician.

Lots of good info in this newsletter. If you like crabbing from your dock there's a very interesting article on the oxygen levels and your crab traps. I had the opportunity of speaking with the "crab" expert (no its not me) with the LDWF, Mr. Gillory. He had some very good info so you might want to read that article.



Board members:

Cathy Drolla, Anne Nash, Jerri Candebatt, Denise Montalbano hard at work at the Tuesday, September 8th meeting at Salmen.

Some NEW "news" is we have a new social group starting for those residents who are single and would like to socialize with "no strings attached"... What a great thing for our beautiful community. This group is looking for single folks (50+ years young). We'll surely be celebrating this holiday season with this gang at our Christmas Party.

By the way please put that on your calendars now and save the date. Tuesday, December 8, 2009 at the Harbor Center will be our Annual Christmas Party, complete with food, open bar, music and karaoke, and dancing. Time starts at 7:00. This is the last meeting of my term, with nomination and election of officers. So come one, come all.

Equally important is an update of our flood protection. Although the Corp meeting was a disappointment. On a very positive note was the turnout. The government officials know us now as a group to be reckoned with. Again, THERE IS STRENGTH IN NUMBERS. All major news stations were there and commented on the lack of preparedness from the Corp on all levels down to the expected turnout. It was a standing room only meeting.

Our general membership meeting was held Tuesday, September 8, 2009 at Salmen High School cafeteria. Our guest speaker was State Representative Greg Cromier giving us an update on the flood protection projects. Also were Mr. Wayne Collier and Ms. Sandy Fauchaux speaking on the importance of getting the land fill (aka dump) closed as promised at the end of 2009. They are requesting an extension and we should let the powers that be know that should NOT be an option.

In closing, a heartfelt thank you for our wonderful paid members who care to support their community and do their fair share to ensure it's beauty. To the VERY FEW of you P.C. who don't pay, or continue to use our beautiful parks (called common grounds) for your own personal use, dumping grass clippings, tree limbs, and parking vehicles, and storing boat and jet ski trailers, I say "shame, shame, shame". What a "shame" it will be if you return home to find your personal property gone.

Laissez le bon temp roulez.

Liz Hoffmann, President (and proud of it), EIHOA
(August/September, 2009)

VISIT WWW.EIHOA.ORG

Storm Surge Meeting Impact

By Thomas Thompson

Thanks to everyone for attending the Corps of Engineers meeting on June 16 at the Harbor Center. Many were disappointed in the way the Corps dominated the meeting and did not allow opposing views to be heard. Many left the meeting frustrated and angry that they were not allowed to speak, but the huge turnout raised awareness of the need and value of a storm surge barrier across the east end of Lake Pontchartrain and gave cause credibility.

The June 16th meeting with the Corp was the first step in achieving our goals. The overwhelming turnout at meeting has opened doors for Eden Isles resident, John Faust, who leads this effort and continues to work on behalf. As a result of your support at the June 16 public meeting, John has met with countless politicians and are now listening to us.

Don't give up! Stay engaged. Continue to call, email and write your Congressmen and Representatives in Washington demanding the barrier plan is approved, funded and placed on a fast track for completion.

We will save our homes, our parish, and our quality of life with your continued support.



Libbey D's

985-707-6707
email: libbydstudio@aol.com

Pottery

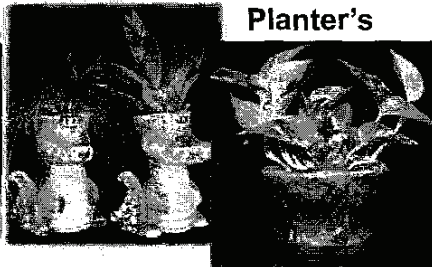
gallery of gifts



Fleur de Lis/Slate



Wine Bottle Holders



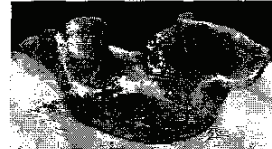
Planter's



Wind Chimes



Bowls



Jewelry

Dichoric Glass



Fleur de Lis pendant

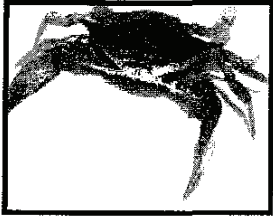


Pendants and Earring Sets



Pendants





Crabbing (by Liz Hoffmann)

Do you enjoy crabbing from your dock? Have you ever noticed that some traps will be really full while others just feet away are empty? Ever notice when some days they don't even go for your bait and other times the bait is completely gone?

Well these are all questions asked of the Louisiana Department of Wildlife & Fisheries "Crab Expert", Mr. Gillory.

This telephone call to Mr. Gillory was prompted by a concerned resident about his crab trap being filled with beautiful, but DEAD, crabs. Being concerned that Eden Isles had some water quality issues and finding out from the Department of Water Quality that not to be the case, (your HOA at work) I was directed to "The Crab", as he is affectionally called by friends and family alike.

Mr. Gillory stated that this is the time of year when photosynthesis, (yokes a word from science class too many years ago) is limited. Going back to the basics, like "Are you Smarter Than A 5th Grader", Mr. Gillory reminded me that the sun is needed to make oxygen. When we have very cloudy days the sun cannot penetrate the water and thus photosynthesis cannot occur. In addition, fresh rainwater and run off will also affect this very scientific process. Decay on the bottom will rapidly deplete oxygen. Marine life when free can swim to find pockets of oxygenated water and continue to thrive. However, when crab traps are allowed to sit on the bottom, their captors (fish and crabs alike) cannot convert the very limited oxygen in the water and will face certain death (before the pot).

Mr. Gillory went on to suggest that during these time crabs should be transferred to a holding bin held just a few feet under the waters surface or in an oxygenated holding bin. He suggested something as simple as adding an aerator to the holding bin. Again, he reminded us not to expect our catch to last for weeks at a time, but for a short period you should be fine for your next crab boil. He welcomed invites for the party.

Oh by the way, for those traps that are empty just move them a foot or two off the bottom and see what you can catch.

Special thanks to Mr. Guillory "The Crab" for taking his time for my questions.

BOILED CRABS (Louisiana Seafood Cookbook)

Ingredients:

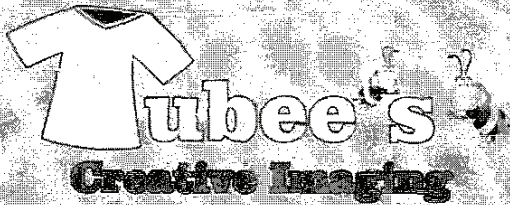
kettle
water
4 tbsp. Liquid crab boil
½ cup salt
½ cup vinegar
2 dozen beautiful, live, Louisiana blue crabs

Serves: 4

In your kettle, pour water, add crab boil, salt & vinegar and bring to a rolling boil. Add crabs. Bring to a rolling boil again and boil for 15 minutes. Turn off burner and allow to sit for 5 minutes. Remove crabs (remove basket or strainer), serve on trays, a dozen/tray. Traditionally, boiled crabs are eaten on picnic tables covered with newspaper.

(hey where are the onions, garlic & potatoes, not to mention the other good stuff???)

VISIT WWW.EIHOA.ORG



Embroidery • Direct To-Garment Printing • Promotional Products

Jerri Candebat
Stephanie McElroy
985-690-6343

P.O. Box 66
Slidell, LA 70459
tubees@bellsouth.net

Tubee's Quality Products

You want it, we'll do it!

Jackets - Bags - Towels - Bed Linens
T-Shirts - Caps - Luggage - Polo Shirts

**WANT FREE MERCHANDISE?
HAVE A HOME PARTY.**

**CALL US NOW FOR MORE INFORMATION!
985-690-6343**

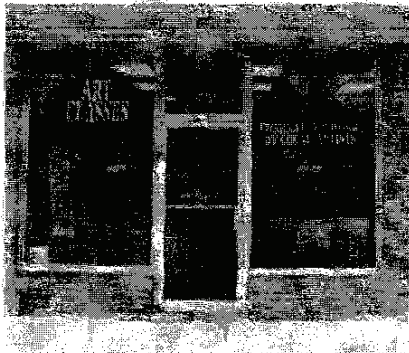


Attention Ladies & Gentlemen of Eden Isles:

Would you be interested in an
"Over 50" single club?
Interested in networking with others for
card games, board games, outings,
dances, etc?

Please call 985-641-6731 or 985-645-
9242 (if no answer leave a message cuz
they are on the go).

ASCHE STUDIOS
OF FINE ART GALLERY



Asche Studios & Fine Art Gallery

Tuesday-Friday 10:00 a.m. - 6:00 p.m.
Saturday 10:00 a.m. - 4:00 p.m.

Offering B.Y.O.B. Group Adult Art Classes

Friday Evenings 6:30 p.m. - 8:30 p.m.

\$40 per person per class

All Supplies Included - All skill levels welcome

Under 18 welcome with Adult Participating

Limited seating for 12 people

Make Reservations Early

Walk out with a finished piece of artwork

Private Parties Available for Adults and Kids



Original artwork by local artists Mickey and Milo Asche
360 Sun Valley Drive, Slidell, LA 70458
(two doors down from Petals and Stems on Pontchartrain Dr.)

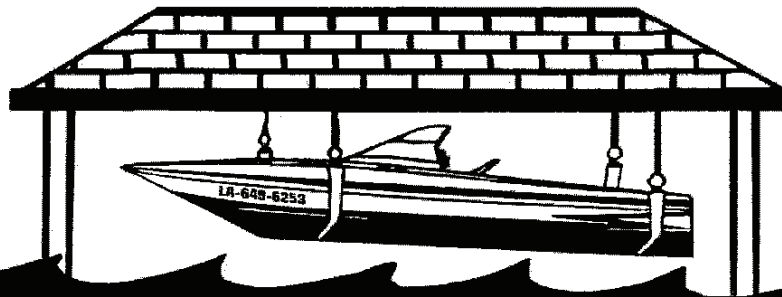
www.AscheStudios.com 985-290-2334

CINDY M. CONSTRUCTION, L.L.C. dba

C & M Construction

BOAT HOISTS • BOAT HOUSES
DOCKS & DECKS

L
I
C
E
N
S
E
D



I
N
S
U
R
E
D

985-649-6253

SLIDELL, LA

DENNIS KNECHT

NEW ORLEANS, LA

Voting Results

At the last homeowners meeting we presented a list of proposed improvements and asked you to tell us which improvements are most important to you and provide comments to help us serve you better. This is your response to these requests:

1. Install security cameras at both entrances to our island
2. Replace all existing street signs with unique, high quality street signs
3. Beautify Eden Isles Blvd. neutral ground
4. Install landscaping at both entrance signs
5. Install digital signs at both ends of Eden Isles Blvd. to display real time messages
6. Replace the Moonraker sign that was destroyed by Katrina

We have enough general membership funds to accomplish the two top items you selected. In addition we are fortunate enough to have enough beautification funds from our agreement with Coastal Waste* to accomplish items 3 & 4 without using general membership funds. The digital sign only received three votes and the Moonraker sign received none.

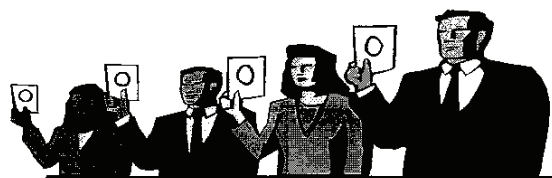
Along with your vote you also provided the following feedback:

Comments and Requests Received - The board is doing a good job; keep the meetings at Salmen High School, but would like to see improvements in the sound & A/C system (only one person wanted to return to the Harbor Center); RV's, trailers & equipment parked in yards & driveways & common grounds, look trashy; residents need to cut their lawns; residents need to cleanup after their dogs when taking them for a walk; send a response letter to homeowners after sending in dues would let them know the money was received & send corrections out on paid members; like the idea of yard flags; make flood protection our highest priority & put money towards flood protection; meet every other month, once a quarter isn't sufficient; print meeting minutes in the news letter and post on the website; enlarge the print in the news letter; have water tested every three months; more family activities for members (fishing rodeo, picnics, poker runs, holiday parties, S/D garage sales, fish fries, etc); up date the website, current information on site dates back to 2007; do not plant gardens around street signs, they are not maintained and looks terrible, we need a professional landscaper; put up our bulletin board again; install traffic ticket cameras on Eden Isles Dr.

As a result of your vote and your financial support we are currently working on the installation of the security cameras, street signs and beautifying Eden Isles Blvd.

*You are free to choose your garbage pick-up provider, but Coastal Waste gives Eden Isles beautification funds based upon the number of residents they serve. Please consider using Coastal Waste as your garbage pick-up provider, their number is

781-3171.



Eden Isle Homeowner's Association - Sept. 8, 2009 -General Meeting

President- Liz Hoffmann

Vice President - Cindy Franatovich

Secretary- Anne Nash

Treasurer- Jerri Candebat

Green Force: Cathy Drolla

Directors: Ralph Grimaldi

Tommy Candebat

Advisory: Tom Thompson

1. The meeting was called to order at 700pm.
2. Liz welcomed everyone and introduced our new members, Fred and Joyce Knecht.
3. B Nash made a motion to suspend the reading of the minutes and seconded by D. Franatovich.
4. Liz called for the officer's reports.
5. The treasure's report was given by Jerri. The association had \$53,976 in our account. Expenses year to date are \$30,793. A motion was made by Joyce and seconded by Gretchen to accept the treasure report. It passed by unanimous vote. The proposed 2010 budget was presented and discussed. A motion was made and seconded to accept the 2010 budget. It passed unanimously.
6. Greenspace leader, Cathy Drolla has started the process of getting bids to redo the Hwy 11 entrance. She will have plans and ideas for the next general meeting. One of the first she received includes a water fall and pump system. A homeowner asked about the maintenance of this waterfall idea. Discussion ensued. Cathy will have more information soon. We are asking for any information about the anchor at Hwy 11 entrance. Please contact a board member if you know the history of it.
7. Greg Cromier, our state representative was present to give the association an update on the progress of flood protection talks for the area. He assured us that Governor Jindal is very interested in our cause. Louisiana government officials will be meeting with Mississippi government officials to discuss surge/storm issues on the 21st of September. Senator Vitter will also have a representative from his office. He also addressed the issue of the interstate signage not including Eden Isle on the twin spans. He said he has met with DOT and they assured him it will be looked into and probably an oversight.
8. Ralph gave an update on the Camera Security System. The contract with charter has been signed and will be stored electronically on the EIHOA computer. The cost of the service will be \$100/month with a 24 month contract signed. There will be a one time installation fee of \$100 per camera. Charter has given an installation date of September 21st. Ralph will house the system at his home. The live feed will be accessible to all homeowners via the EIHOA web site. The vendor for the cameras has estimated an installation date in early October. A sign will be posted for the public to be aware that video surveillance is recording traffic. The initial set up will be 4 cameras with the ability to add up to 8. We are inquiring from our insurance agent if this system will allow a reduction in our rates. A homeowner asked if the cameras could eventually record our waterways to deter thief. Ralph was unable to answer other than at this time no.
9. Cindy presented the street sign prototype. There was very positive feedback. Eden Isle Blvd, Pebble Beach and Moonraker will be the first installed with estimated time frame of November. We will add street signs through out the rest of the year and 2010.
10. A couple of members are trying to start a 50 and above singles social club to go dancing, out to eat, and participate in fun activities. If you are interested, contact Carol Wester.
11. The Christmas party will be on December 8th at the Harbor Center.
12. The Christmas Boat Parade is December 19th.
13. The Krewe of Bilge Mardi Gras Boat Parade will be February 10th.
14. Kerry Demaras from the Marine Debris office has been in Eden Isle waterway to see the sunken vessels. Liz presented pictures of these vessels and asked if anyone knew the addresses.
15. Jerri reported that the EIHOA received a letter saying the parish will be in our neighborhood enforcing the fire hydrant code. The code states that there will be no shrubs, vegetation within 5 feet of a hydrant. The parish will remove all shrubs within the five foot boundary and will be painting the hydrant regulation color.
16. Wayne Collier and Sandy Fauchaux, member from a group of concerned citizens trying to stop the Slidell Landfill from getting a 10 year extension to operate, met with the homeowners. The landfill is already 65 feet high and they want to raise it to 125 feet. This group was able to block the 2006 attempt to keep the landfill open for 10 years. DEQ granted an extension until 2010.

DOTD Removes "Eden Isles" From I-10 Exit 261 Signs

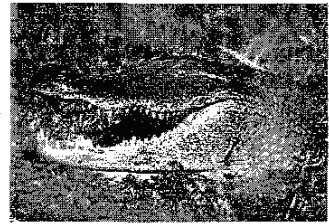
Now that the new I-10 Twin Span over Lake Pontchartrain is operational new I-10 exit 261 signs have been installed. The new signs no longer identify the community of Eden Isles which is a violation of the 1989 agreement Eden Isles has with the DOTD (see history of Eden Isles on our website EIHOA.org). This change was done without the knowledge or approval of the Eden Isles community and violates an established 20 year precedent of identifying the Eden Isles community.

The EIHOA has contacted the DOTD and requested the "Community Designation" of "Eden Isles" be reinstated. Recognition of Eden Isles on the sign is extremely important to our community and we hope to persuade the DOTD to honor their 20 year commitment and reinstate Eden Isles on the exit signs.



State Representative Mr. Greg Cromier addresses the attendees at the General Membership Meeting Tuesday, Sept. 8, 2009

Alligators are important to the ecology of their habitat. During droughts they dig deep holes, or "dens," which provide water for the wildlife community.



They hibernate in dens during the winter. Diet consists of rough fishes, small mammals, birds, turtles, snakes, frogs, and invertebrates. Alligators have been relentlessly hunted for their hides and are much reduced in numbers. Under state and federal protection they are beginning to make a comeback in some areas. Just not in Eden Isles, please....

ACE

Pontchartrain Ace Hardware

3320 Pontchartrain
Slidell, LA 70458
985-643-4672
Fax 985-641-6451



2409 Paris Road • New Orleans, LA 70129

RICHIE COLLIGNON
(504) 277-7777

Lishman's CITY MARKET

Our Best to You!
4020 Pontchartrain Dr. Slidell

- Premium Cakes
- Crisp Produce
- Mini Muffalata Trays
- Smoked Ribs
- Rotisserie Chicken
- Delectable Deserts
- Awesome Party Trays
- Green Onion Sausage
- Cajun & Italian Sausage
- Beer, Wine & Spirits

Special needs and requests are welcome!
Eddie Moreno – Store Manager
985-649-2180

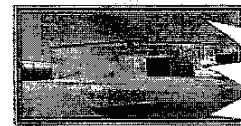
SHAG DISCOUNT

LIQUOR • TOBACCO • BEER • SOFT DRINKS • ICE

• NOW LEAKING STORAGE
UNITS AT GREAT
MONTHLY RATES!
\$299.00/week

• HUNTING AND FISHING
LICENSE, BAIT, TACKLE,
RODS AND REEL

LSU, SAINTS
AND
HORNETS
HATS ARE
HERE!



4436 PONTCHARTRAIN DRIVE
SLIDELL, LA 70458
(985) 649-9898

NEW ARRIVALS
OF FLEUR
DE LIS
JEWELRY,
TIES,
HATS AND
MORE!

YOUR ONE STOP SHOP!
CAN'T FIND WHAT YOU'RE
LOOKING FOR, JUST ASK, WE
CAN GET IT!



SLIDELL EASY PAY TIRE STORE
 NOW OPEN Saturdays • 7:30am - 2:00pm
 CHECK US OUT FOR ALL YOUR VEHICLE NEEDS

3168 Pontchartrain Dr. • Slidell, LA 70458
985-643-7766
 M-F 7:30-6pm • Sat. 7:30-2pm
 Closed Sunday
www.septcs65.com

Gas Saving Tips

1. Keep engine properly tuned for 15% more power & fuel.
2. Check tire pressure at least once a month. Inflate to 32 psi.
3. Keep tires properly inflated for Economy. Saves up to 20%.
4. Use mpg guide to check for Fuel Economy. (www.fuel.gov)



Petals & Stems
 F L O R I S T

Janet & Harrison Bowman

376 Sun Valley Dr. - Slidell, LA 70458 - 985-781-4585

Low Cost • No Contract
 Licensed • Bonded • Insured

(985) 643-7437
 Toll Free 1-866-647-3787

Pro's Pest Control Service Inc.
 Environmental Specialists • Servicing a 4 Parish Area
 Full service available, including reasonable termite control rates
 "For A Change Get Your Money's Worth"

www.ProsPest.com

Roy Provenzano, Jr. 147 Eden Isles Blvd.
 Owner Slidell, LA 70458

Eden Isles Resident for 22 Years!

Anna J's
 Blinds & More

Quality Custom Blinds For Less!
 Locally Owned and Operated

3410 Pontchartrain Drive
 Slidell, Louisiana 70458
judd@annajs.com

Ray Judd
 Cell: (985) 718-7588
 Office: (985) 781-1858

PET OPTIONS NOW!!!!
CALL --- (985) 781-9887
Call for your SPECIAL QUOTE TODAY

GO ON VACATION ANYTIME !
YOUR PETS ARE SAFE & STRESS FREE!
IN THEIR OWN ENVIRONMENT. THEIR OWN HOME!

Residents of EDEN ISLES

CURRENTLY SERVICING EDEN ISLES & OAK HARBOR AREAS!
SERVICES INCLUDE WALKING <FEEDING> WATER <EXERCISE..
LET YOUR PETS STAY IN THEIR OWN COMFORT ZONE!!!!
WE COME TO YOUR HOME.
Meet our English Springer Hershey.
We also raise Spaniels #1 Pet for Families and Children



Eden Isles Homeowners Association

Membership Dues

2009 (it's never too late)

Amount Due To Each Homeowner

\$120.00

REMIT TO

Mailing Address:

EIHOA
P. O. Box 2746
Slidell, LA 70459

Name of Homeowner(s): _____

Home Address: _____

Home Phone: _____ Cell Phone: _____

Email Address: _____

Thank You For Your Support!

IMPORTANT NUMBERS

In Emergency Dial 911

Parish President, Kevin Davis..... (985) 898-2362
Parish Council..... (985) 898-2591
Engineering..... (985) 898-2552
Environmental Services..... (985) 898-2535

Permits & Regulatory..... (985) 898-2574
Planning..... (985) 898-2529
Public Works..... (985) 898-2557
Social Services..... (985) 898-3074
Sheriff Department..... (985) 809-8200 or 911

BOARD OF DIRECTORS

President..... Elizabeth Hoffmann.... (985) 643-9429
Director..... Ralph Grimaldi..... (985) 643-4504
Senior VP..... Cindy Franatovich..... (985) 201-7383
Treasurer..... Jerri Candebat..... (985) 639-1624
Director of Greenspace... Cathy Drolla..... (985) 290-1313
Welcome/Membership... Denise Montalbano.... (504) 309-5911
Director..... Anne Nash..... (504) 669-2466
Director..... Tom Candebat..... (985) 639-1624
VP Programs..... Jeannette Commagere... (985) 645-8713

ADVERTISING

RATES

1/8 page \$40.00
1/4 Page \$60.00
1/2 Page \$100.00
Back Cover \$200.00

CALL AN OFFICER TO GET INFO

Eden Islander Newsletter

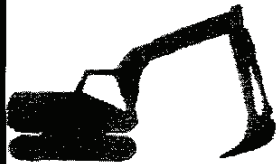
Phone: 985-643-9429

Email: Mistymol@aol.com

Sauter and Sauter Ltd DBA

Distinctive Design CONSTRUCTION

MARINE PILE DRIVING * PIERS * DOCKS
BOATHOUSES * BULKHEADS * DECKS
BOAT HOISTS



985-781-3325

www.distinctivedesignconstruction.com

Owned and operated by Gerald Sauter
Eden Isles Resident In Business for Over 20 Years

Eden Isles Homeowner's Association
P. O. Box 2746
Slidell, LA 70459

PRSR STD
U.S. POSTAGE
PAID
CUSTOM MAILER

SH**R-024
3
5

VISIT WWW.EIHOA.ORG