



THE EDEN ISLANDER

Vol. 2, No. 2

FEBRUARY 1989

FREE

BINGO FOR FIREMEN

The Northshore Volunteer Firemen are building a building to house permanent Firemen. To finance the building, bingo is being conducted at the Regency in Old Town on Thursday evenings. The hall opens at 6:00 PM with the first call at 7:15 PM. \$125 pots and blackout. Call Regency on Thursday evenings at 641-1485 for further information.

EDEN ISLES COMMUNITY SERVICES DISTRICT UPDATE

At the meeting of the "District" the Rules of Procedure were adopted. The rules are basically By-Laws by which the Board of Commissioners conduct business and are the foundations on which the "District" will operate within the parameters of the law in which it was created by and the laws of the state of Louisiana. The next step is to put together a plan to be presented to the people.

The next meeting will be held on February 13th at Abney Elementary School. Hope to see you there.

GOING ON VACATION

Fox Security reports that there has been a lot of confusion concerning member residents leaving town and requesting that their home be checked by the guard. In the future, the guard will refer all persons making these requests to the Fox Security office at 643-0295. They, in turn, will inform the guards via telephone and memo which houses to check while residents are out of town.

SECURITY COMMITTEE

We are quite disappointed - so far - with the apparent results of our November mailing to 265 Eden Isles residents who do not participate in paying for the guard service. When we received only 24 negative responses, we were most encouraged and hoped it was an indication that the balance of the recipients intended to join us the first of the new year.

At the end of the first month of this quarter, we picked up quite a few new residents and want to thank them for their cooperation. However, many "old timers" in the subdivision have not responded at all. We hope they will give the matter some thought and forward their payments before the end of the quarter.

The construction of the I-10 overpass seems to be on schedule, which means we will need another guard gate in two or three months. With receipts as they now stand - minus the Landmark subsidy --- we will be able to support only 9 hours a day at each gate.

We need YOUR help!!!

The 1989 Security Committee is as follows:

Betty Young, Chairman
Jo Creed
Carolyn Craig
Patty Jacobs
Eugene Rovena

For license plates or decals call Jo Creed at 649-4015 or Patty Jacobs at 641-8502.

CASUAL ATTIRE

JACQUES FRENCH RESTAURANT
 HIGHWAY 11 SOUTH EDEN ISLES
 Arrive by Boat/Dock 60 ft long

ORDER TO GO

Hors D'Oeuvres

Paté.....	4.50
Smoked Salmon.....	5.25
Oysters Côte d'Azur.....	4.25
<i>Oysters in garlic and mushroom sauce</i>	
Oysters Provençals.....	4.25
<i>Deep fried oysters in garlic butter</i>	
Escargots de Bourgogne.....	4.95
Shrimp Cézanne.....	4.25
Artichoke Heart.....	4.95
<i>Stuffed with Crabmeat</i>	

Soupe

Soupe du Jour.....	1.75
Soupe à l'oignon.....	3.75

Salade

Caesar Salad.....	6.50
<i>Made at tableside for two</i>	
House Salad.....	1.75

Dessert

Mousse au Chocolat.....	3.50
Flan au Caramel.....	3.50
<i>Vanilla custard and caramel</i>	
Cherries Jubilee.....	6.50
Banane Flambee.....	1.50
<i>Banana, brown sugar and liqueurs, flamed and served with ice cream. Tableside for two</i>	

Specialty dessert of the day

Ask about our extended wine list

HOURS

LUNCH	MON-FRI	11:30 - 2:00
DINNER	MON-THU	5:30 - 9:30
	FRI/SAT	5:30 - 10:00

Entrees

(All entrees are accompanied by fresh vegetables of the season)

Poisson

Soft Shell Crab Sainte Victoire.....	11.25
<i>Soft Shell crab lightly fried and served with oyster and mushroom sauce</i>	
Soft Shell Crab Meunière.....	11.25
<i>Delicately fried soft shell crab, glazed with lemon butter sauce</i>	
Trout Meunière or Amandine.....	10.25
<i>Sautéed filet of trout with lemon butter sauce or with sliced almonds</i>	
Broiled Trout.....	11.25
<i>With crabmeat lemon butter</i>	
Trout Suprême.....	11.25
<i>Filet of trout sautéed in butter, topped with shrimp and mushrooms in Hollandaise sauce</i>	
Shrimp Mistral.....	9.95
<i>Shrimp sautéed with green onions, flamed in Herbesaint and simmered in a light cream sauce</i>	
Shrimp Cézanne.....	9.95
<i>Shrimp simmered slowly in a garlic and paprika sauce</i>	
Oysters Brochette.....	9.95
<i>Select Louisiana oysters delicately fried and glazed with a tangy lemon butter sauce</i>	
Shrimp Brochette.....	9.95
<i>Grilled shrimp glazed with spice butter</i>	
Bayou Pasta.....	9.95
<i>Oysters and fettuccine</i>	
Veau Nature.....	10.25
<i>Baby white veal covered with white wine lemon butter</i>	
Veau Lyonnaise.....	10.95
<i>Delectable baby white veal topped with melted swiss cheese and light cream sauce</i>	
Veau des Beaux Frères.....	10.50
<i>Sautéed baby white veal in a mushroom and wine sauce</i>	
Agneau aux Herbes de Provence.....	14.95
<i>Lamb Chop with herbs and spices</i>	
Filet Henri IV.....	14.95
<i>Grilled filet served with Beamaise sauce</i>	
Filet au Poivre.....	14.95
<i>Filet flamed with cognac and green peppercorn sauce</i>	
Filet au Bayou.....	14.50
<i>Filet Mignon topped with crabmeat, mushroom and hollandaise sauce</i>	
Canard Roti a L'orange.....	13.50

BANQUET ROOM AVAILABLE



PHONE

649-3434

Vote for Milton Gibson Police Juror District #13

Vote for the Candidate that
believes you cannot wait for
things to happen, YOU MUST
MAKE THEM HAPPEN!

- *Leadership Ability*
- *Dedication*
- *Honest*
- *Accountability*
- *Availability*

Paid Political Announcement

NEW PRESIDENT - SLIDELL CHAMBER OF COMMERCE

Tom O'Connor of O'Connor Financial Planning was recently elected President of the Slidell Chamber of Commerce. Tom lives on Lakeview Drive and has helped in bringing Lakeview Drive residents, who are in the proposed community Services District, into our readership.

MARKS LAWN CARE

8 years of lawn and garden care

CUTTING EDGING TRIMMING BLOWING ETC.

Call: 641-2824

DEPENDABLE AND REASONABLE Eden Isles resident

CLASSIFIED ADS - FOR SALE

AKC Reg. Chow Chow puppies. 3 Female/2 Male - Cinnamon color. Born 01/23/89. \$200.00 includes papers & first shots. Call after 2:00 PM (601) 467-2799 ask for Charles or Louise or leave phone no. at gate with guard to call you.

THE EDEN ISLANDER

Publisher Eden Isles Homeowners' Assoc.
Editor George Denn (643-3125)
Circ. Manager Norma Hastings (643-1831)

Advertisement Rates:
Business Card \$10.00 issue/\$90.00 year
1/2 Page Ad \$25.00 issue/\$225.00 year
Full Page Ad \$50.00 issue/\$450.00 year

The Eden Islander is published monthly by the Eden Isles Homeowners' Assoc. 100 Eden Isles Dr., Slidell, La. 70458

PUBLIC SAFETY COMMITTEE,
HOMEOWNERS ASSOCIATION

BY Robert Lazar, Director

The Public Safety Committee (PSC) has been organized to address the safety and security issues of Eden Isles. The PSC will serve as a clearing house for our current needs and as a planning tool for future needs.

Security will - as before - be served by the existing Security group, which will become a major subcommittee reporting to PSC. Please address your security needs and questions to the same people. Guard service will continue, with improvements coming as needed. (A future article will discuss the issue of the second gate which is planned for the east end of Eden Isles Drive.)

Improving fire protection will be a prime concern of the PSC. This will include but not be limited to the following:

1. Recruitment of residents to become volunteer firefighters. The PSC is working closely with the North Shore Volunteer Fire Department (NSVFD) to train our recruits. Currently, two of our neighbors have been trained and are members of the NSVFD.

The NSVFD is part of the St. Tammany Fire District No. 1, which is the largest fire department in the Parish. The Fire District currently responds to fires in Eden Isles with regular engines from West Hall Street and Robert Road fire stations and a volunteer engine from Carr Drive. A single phone call to 643-4242 activates this system. When reporting an emergency, always give as exact an address as you can. (The PSC will describe the 911 system in a later article. At present, the 911 emergency system is due to be activated later this year.)

Nicholas J. Tranchina
Registered Representative

1515 Poydras
New Orleans, LA 70112
(504) 581-1269

Transamerica
Financial Resources, Inc.

Transamerica



Home 641-7134

PUBLIC SAFETY COMMITTEE (continued)

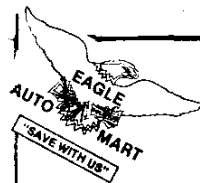
2. Another major project of the PSC is to help establish a fire station in the Eden Isles neighborhood. This station will be operated by the NSVFD and will house two fire engines. Eventually, firefighters and an engine for the Fire District will provide 24-hour manning of this station and the NSVFD will provide backup. Much work remains to be done to accomplish this goal.
3. The PSC will continue to improve fire protection and toward lowering the fire insurance rating for the community. (More about this in a later article.)

The PSC will be involved in other safety issues and will coordinate with the various other groups and officers of the Homeowners Association. Traffic flow and the need for "Slow Children" signs are one concern. There are others also.

If you have a concern or question about public safety, wish to join the volunteer fire department or the PSC, please contact me evenings at 641-7025.

Some other important numbers:

Fire Dept.	643-4242
Sheriff	643-2121
Hospitals/Ambulances - Slidell Memorial	643-3563
Northshore	646-5050
CLECO (for Nonfunctioning Street Lights)	643-5555
Lakeside Water (For Water Leaks/Broken Hydrants)	641-7932



EAGLE AUTO MART

720 Old Spanish Trail
Slidell, Louisiana 70458
(504) 643-8100
(504) 643-7672

**MECHANIC
ON
DUTY**

OPEN 7 DAYS

**40 MO. BATTERY
ONLY \$33.95**

**BRAKE SPECIAL
ONLY \$54.95
PARTS & LABOR**

*IMPORT & DOMESTIC
AUTO PARTS*

GARDENS OF EDEN

4726 Pontchartrain Drive
Phone 643-3271



* FREE LANDSCAPE ESTIMATES *

FEBRUARY IS IDEAL FOR TREE PLANTING

MENTION THIS ADD FOR 15% OFF ANY TREE IN FEBRUARY

COMPLETE LINE OF

TREES -- SHRUBS -- INDOOR PLANTS

BEDDING PLANTS -- FERTILIZERS

INSECTICIDES -- AND GARDEN PRODUCTS

OPEN 7 DAYS

SINCE 1978

JUST ARRIVED _ ROSES AND FRUIT TREES

Master Card
Visa

8:30 A.M.

to

5:00 P.M.

Diane Liuzza

Richard Liuzza

24 Hour Service
566-4105



Service all
Makes & Models

18 Years of Experience

Commercial

AIRCO

Residential

AIR CONDITIONING • HEATING • INC.

Home Phone #

Roy Bellinger

646-0602

Jerry Boudreaux

O'CONNOR FINANCIAL PLANNING, INC.

A Registered Investment Advisor

"We believe the personalized services of an independent certified financial planner will help you make the most efficient use of your income and assets."

Specializing in:

- Comprehensive Financial Planning
- Retirement Planning
- Business/Employee Benefit Plans
- Tax Advantaged Investments
- IRA'S

Tom O'Connor, CFP
102 Village Street
Slidell, LA 70458

(504) 643-2802

Investacorp: Broker/Dealer

LOFLAND YACHTS

DEALERS FOR

★ **MARATHON**

★ POWER BOATS 19' - 37'

★ **HUNTER** 

★ SAILBOATS 23' - 45'

BROKERAGE

We Will Sell Your Boat Or Yacht Sail - Power - Small Or Large

AUTHORIZED DEALER FOR



**VOLVO
PENTA**

YANMAR DIESEL

PARTS • SALES • SERVICE



Full Marine Repairs Service • Certified Mechanic On Duty

(Also Operating)

**WARKEN •
Boat Shoes**

THE SHIPS STORES
BOATING ACCESSORIES & EQUIPMENT

Xinterlux



OFFICE
649-2121

STORE
649-2642



4610 PONTCHARTRAIN DR

TRADES • FINANCING • SERVICE



Homeowners' Association, Inc.

Dear Eden Isles Homeowners:

The Eden Isles Homeowner's Association, Inc. was formed in 1974 to represent the collective interests of the majority of homeowners and to inform the membership and community of developments which directly and indirectly affect the quality of our lives and property values within Eden Isles.

General membership meetings will be held on the last Monday of every other month beginning in January. The management of the association is guided by the Board of Directors which consists of nine members elected by the general membership for staggered terms in November of each year. The new Board of Directors consists of the following individuals:

Bill Weil-President
Allen Lofland-Vice President
Norma Hastings-Treasurer
Judy Polderman-Secretary
Ray Young
Ann Marie Furphy
Bob Lazar
Clarence Mullet
Ann Gremillion

The standing committees of the association are:

Security Committee: Headed by Betty Young, 646-0596.

Collects voluntary contributions for gate security, provides decals and license plates bearing the Eden Isles logo. Interacts with Fox Security and recruits new members to increase security service.

Grass Cutting: Headed by Bobby Tassin, 641-5864. Collects monies from lot owners to cut grass on private lots only several times per year and interacts with the parish government regarding unkept property.

Block Captains Committee: Headed by Norma Hastings, 643-1831. Circulates the Eden Islander newsletter and acts as a welcoming committee to new residents.

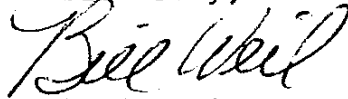
Safety Committee: New committee headed by Bob Lazar, 641-7025 created to improve the safety of our streets by adding street signs where necessary, provide fire safety awareness through the use of smoke detectors, fire extinguishers and education and to alert CLECO and the lighting district when lights need replacing.

Street Committee: New-Headed by A.K. Wilson, 641-4747, for the maintenance of streets within Eden Isles.
 Public Works Committee: New-Headed by Ray Young, 646-0596, to be liason with Lakeside Utilities and maintain the physical property of the neighborhood such as the guard house and the sprinkler system on Eden Isles Drive.
 Eden Isles USA Committee: New-Headed by Allen Lofland, 641-1167, created to improve the name recognition of Eden Isles at a time when we are witnessing a name change of all that surrounds us. The committee sells shirts and hats bearing the Eden Isles logo and will organize a sales effort with film to be available to area real estate brokers to promote the features and advantages of living in Eden Isles.

The Eden Isles Homeowner's Association also provides the Eden Islander Newsletter. For advertising space, please contact George Denn at 643-3125.

The Board of Directors would like to extend an invitation to all residents in Eden Isles to join our association. The annual dues are \$10.00 per household and are due in January of each year. Your dues help support the newsletter and provide the needed funds for our operation. There is a membership application in this newsletter for your convenience. We need your support and input to improve our community.

Sincerely,



Bill Weil
 President, 641-4594

MEMBERSHIP APPLICATION

EDEN ISLES HOMEOWNERS ASSOCIATION
 P.O. BOX 2746, SLIDELL, LA 70459

NAME:.....
 (First) (Middle) (Last)

OCCUPATION:.....COMPANY.....

ADDRESS:.....
 (House Number) (Street Name)

TELEPHONES:.....
 (Home) (Office)

NAME OF SPOUCE:.....OCCUPATION:.....

All information requested is for use only by EDEN ISLES HOMEOWNERS ASSOCIATION and none will be made available to any other organization or party. If you feel that any of the request are of a personal nature please write in "Personal" in place of that information. THANK YOU VERY MUCH FOR YOUR MEMBERSHIP.

SECURITY PETITION

For those residents who agree with the need for guard service and support its continuance, please sign below and return it to the Security Committee, 303 Eden Isles Drive.

A PETITION TO RETAIN AND ENHANCE THE CURRENT SECURITY SERVICES

WE, THE UNDERSIGNED, ARE IN SUPPORT OF AND WANT TO RETAIN OUR CURRENT GATE SECURITY SYSTEM FOR EDEN ISLES. WE, THE UNDERSIGNED, ALSO PETITION THAT EQUIVALENT SERVICE BE EXTENDED TO THE NEW GATE WHEN IT IS OPENED TO TRAFFIC. THIS LEVEL OF SECURITY SERVICE IS AN INTRISIC COMPONENT OF OUR COMMUNITY AND HAS PROVIDED THE INDIVIDUALS AND FAMILIES OF EDEN ISLES WITH A HIGH LEVEL OF SAFETY.

NAME

ADDRESS

DATE

EVINRUDE

NORTH SHORE MARINE



FEBRUARY SPECIALS

RECONDITIONED OUTBOARDS

- '68 9.5 HP EVINRUDE \$ 325.00
- '86 28 HP EVINRUDE
ELEC W/CONT BOX \$ 995.00
- '81 140 HP EVINRUDE
W/CONT. BOX \$ 1950.00

- ★ NEW 6 HP SAIL DRIVE
W/TANK & HOSE \$ 899.00
- ★ NEW 1986 200 XP \$ 5425.00
W/CONTROL BOX

LARGE SELECTION OF FISHING
TACKLE W/BEST PRICES
ON THE NORTH SHORE

COMPLETE LINE OF
TRAILER PARTS, GET YOUR
TRAILER READY FOR
THE SPRING!!

646-1718

BOTTOM JOBS
ON BOATS,
UP TO 26'

4838 PONTCHARTRAIN DR - ON HWY 11 NORTH SHORE (SLIDELL)

LEFTWICH • DELCAMBRE • MURPHY

A CORPORATION OF CERTIFIED PUBLIC ACCOUNTANTS
1111 South Jefferson Davis Parkway • Suite 220
New Orleans, Louisiana 70125-1701
504/488-4491

G. Wallace Leftwich, CPA
Richard P. Delcambre, CPA
Timothy G. Murphy, CPA

American Institute of Certified Public Accountants
AICPA Private Companies Practice Section
Society of Louisiana Certified Public Accountants

Tax Planning and Return Preparation
Management Advisory Services
Accounting Services
Computer Consulting
Auditing

For convenient and
professional tax and
accounting services
in Eden Isles contact:

Mike Flynn, CPA
236 Blackfin Cove

(504) 649-0743

YARD CARE

By Diane Liuzza
Gardens of Eden

Mole crickets are becoming a problem to lawns in Eden Isles. If you have mole crickets in your lawn you will see small mounds of soil scattered on the surface of your lawn. Large areas of your lawn will turn brown and die. One way that you can determine for sure if you have mole crickets is to make a solution of one ounce dishwashing detergent in two gallons of water. Drench about four square feet of lawn area. The mole crickets will come to the surface in a few minutes. They are greenish gray to brown about 1½ inches long with short front legs and shovellike feet. They damage lawns by tunneling through the top one to two inches of grass. They also feed on grass roots. They feed at night and may tunnel as much as 10 to 20 feet at night. To control use Mole Cricket Bait and Vliazinor Spray or Diazinon granuals.

WHERE THERE'S FIRE, THERE
ARE EDEN ISLANDERS!

Congratulations to Norm Francioni, who passed the State examination for fire-fighters, with the North Shore Volunteer Fire Department (NSVFD). He will be joined soon by Bill Weil, who is in training with the NSVFD. Robert Lazar was just voted Treasurer and Secretary for the NSVFD.

Eden Isles also has Milt Gibson who is a Commissioner of St. Tammany Fire District No. 1.

Folks, there's plenty of room for more. To join the NSVFD, contact Robert Lazar.

20% Discount 1st Time Customers

Julie Bryant

HAIR DESIGNER AND COLORIST

MARIE'S HAIR BOUTIQUE

504-641-7815
504-643-4298

4418 EDEN ISLES DRIVE
SLIDELL, LA 70669

NOTICE

REGULAR MEETING
BOARD OF COMMISSIONERS
EDEN ISLES COMMUNITY SERVICES DISTRICT

DATE: Monday, February 13, 1989
TIME: 7:00 PM
PLACE: Abney Elementary School
825 Kostmayer Avenue
Slidell, Louisiana

A G E N D A

1. Pledge of Allegiance
2. Roll Call
3. Consent Calendar
 - A. Approval of Minutes from Previous Meeting
 - B. Introduction of Proposed Ordinances
 - C. Other Items
4. Items removed from Consent Calendar
5. Discussion of Report of Legislative Review Committee Report
6. Comments from Commissioners
7. Committee Reports
8. New Business
9. Audience Participation
10. Statement of Time and Place for Next Meeting
11. Ajournment

EDEN ISLES GARDEN CLUB

BY: Lillian Siebenkittel

The January meeting of the Garden Club was held at the home of Brenda Castiglione with Jackie Michel co-hosting. Doris Raimer was introduced as a new member of the Club. Josie Avocato had as her guest, Michele Landry.

President Michel discussed a Community Service School Project whereby a student will give his time working on a community project. Students wanting to help, please call 649-6820.

Arbor Day was dedicated to the memory of a past member and officer of the Club, Margaret Garwood. She was a good working member and is sadly missed. The trees were awarded to Mr. & Mrs. Joseph Frosio and Mr. & Mrs. Louis Buffardi.

Our Annual Day at the Races held at the Fair Grounds will be on February 15th. Anyone wishing to attend please contact one of our members.

Please ask your teenagers not to litter streets with paper cups and cigarette butts, it is so unsightly. We wish to apologize to residents of Moonraker. Our Arbor Day sign stated Eden Isle residents were eligible, when it should have read "All residents of Eden Isles and Moonraker were eligible to enter." We are sorry for the oversight.

NEED A BABY SITTER?

The following residents are available for baby sitting services within the Eden Isles area:

- Danielle Carey 641-1633
- Laura Ison 643-7487
- Wendy Nall 649-4906
- Michelle Vincent 641-0719
- Wendy Leonard 649-2877
- Melissa Herbert 649-6148
- Mary Helen Obryan 649-4262
- Elizabeth Gibson 641-6971
- Denise Drewes 641-0958
- Erin Harris 649-0296
- Sandra Becker 646-0625
- Lara Gallagher 641-8501
- Shawn Verges 649-5315
- Sandy Key 643-8693

(Adult - daytime only)

Low Cost
No Contract

Slidell # 643-7437

Pro's Pest Control Service

Environmental Specialists
Servicing 4 Parish Area

147 Eden Isles Dr.
Slidell, LA 70458

Full Service Available
Roy Provenzano - Owner

"FOR A CHANGE GET YOUR MONEY'S WORTH"

Laird's
CHIMNEY SWEEPS



12 Years
Experience

892-8432

649-0107

*** USED LUMBER ***

- 2 x 4 Pine 5/8 x 4 x 8 Plywood
- 2 x 6 Pine 3/4 x 4 x 8 Plywood
- 2 x 8 Pine For Roofing
- 2 x 10 Pine
- 2 x 12 Pine
- 2 x 6 Tongue & Groove Treated Decking
- 6" x 9' Spindle Post

**** 500 Carr Drive ****

Talking About Your Home



**NORMA ALBERT
HASTINGS
REALTOR**
Million Dollar Producer
Home Phone:
643-1831
Servicing the Slidell
area and specializ-
ing in residential
sales.

I Am Here For You

Selling Your Own Home: Do You Profit . . . or Lose?

If you're planning to sell your home soon, you may have thought about doing it yourself. But before you start adding up your savings, consider these reasons why you may save *more* by selling with me:

1. Pricing. A real estate professional knows market prices. That's important. An underpriced home may sell quickly, but for too little. An overpriced home may not sell at all. Correctly priced, your home should sell at the best possible price, within the shortest possible time.

2. Qualifying. A professional knows how to qualify prospects. You don't waste time on non-qualified "lookers."

3. Marketing. Your real estate professional writes ads, takes calls,

answers questions, and shows your home to its best advantage.

4. Negotiating. A real estate pro can negotiate objectively for you. When questions get tough, the pro has an easy out: "I have to ask the owner."

5. Contracting. A pro knows what a legal, binding contract must include.

6. Closing. Your real estate professional knows how to open an escrow, order a title report, schedule necessary inspections, and plan a closing.

As an experienced real estate agent, I know the ins and outs of selling homes like yours, and as your agent, I'll work hard to get the best possible price for your home.

Remember, I am here for you!

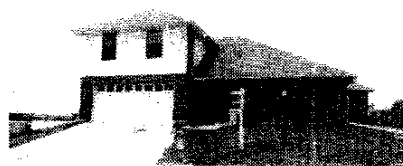
Home Warranties: A Growing Trend

A Gallup Poll shows a growing number of homeowners are interested in having a home warranty plan protecting their homes.

As early as 1980, a survey showed nearly 80 percent of homeowners were interested in having a home warranty plan. Real estate professionals quickly responded to that demand. Now, many agents and brokers make it a practice to offer their clients a home warranty.

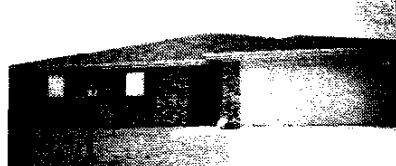
One reason interest in home warranties has increased is the growth of companies like American Home Shield. With over 17 years of experience in the field, American Home Shield is the nation's leading provider of home warranty plans.

If you're considering selling or buying a home, take advantage of the fast-growing trend toward the security and convenience of an American Home Shield home warranty plan!



EDEN ISLES WATERFRONT

Bank Repossession - Special Fin. Bank will pay closing cost. 4 BR's & 3 baths - 100' on wtr. Call Norma Hastings for more financing details. 643-1831. MLS:56252



EDEN ISLES WATERFRONT

Open Floor plan - 3 BR's 2 baths. Greatroom - covered patio - deck - 60' on water with dock. Large masterbath w/double walk in closets. Call Norma for appointment 643-1831. MLS:59179



EDEN ISLES WATERFRONT

Easy access to Lake Pontchartrain. Octagon ceiling in dining & master bedroom, double closets, lots of storage - screen porch, beautiful water view. Call Norma Hastings 643-1831. MLS:59180

EDEN ISLES **True Value** HARDWARE

4500 PONTCHARTRAIN DRIVE, SLIDELL, LA 70458 641-9502

24 HOUR SELF SERVICE CAR WASH

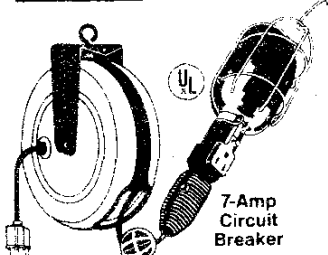
*MARINE HARDWARE
MASTER MECHANIC TOOLS
FISHING SUPPLIES
ROD REPAIRS
MARINE PAINTS*

**PROPANE
TANKS
FILLED**

NEW YEAR SPECIALS

20% OFF Rods, Reels, Tackle Boxes (while supplies last)
RENT--Carpet Cleaning Machine \$15.50 for 24 Hours

Master ELECTRICIAN



7-Amp Circuit Breaker

12.66 *While Supplies Last*

20-Ft. Retractable Cord Reel has a trouble light, circuit breaker, grounded outlet and mounting hardware. 362566

QUANTITIES LIMITED

BLACK & DECKER




9.99 *While Supplies Last*

Flamebuster™ Kitchen Fire Extinguisher works in seconds without a mess! XFE100

QUANTITIES LIMITED

Scotch

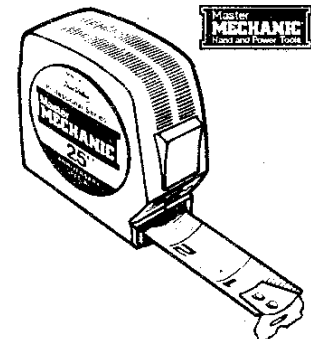


9.77 *While Supplies Last*

3-Pk. Videocassettes. 2 standard, 1 high-grade tape. 2 to 6 hours. NC-3PACK

QUANTITIES LIMITED

Master MECHANIC
Hand and Power Tools



6.99 *While Supplies Last*

25-Foot Power Tape Rule with locking 1-in. wide blade, 3-inch read for easy inside measurements. MMS425

QUANTITIES LIMITED

Duplicate Keys Made
George Kendrick, Owner

Hours: MON-FRI 9:00 - 5:00; SAT 8 - 5; SUN 9 - 1

VISIT OUR WALL PAPER BOOK SELECTION DEPARTMENT
20% DISCOUNT ON ALL ORDERS