

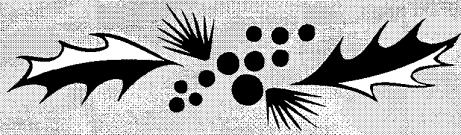
The Eden Islander

THE OFFICIAL "EDEN ISLES NEWSLETTER"

EDEN ISLES DEC 2011

P.O. BOX 2746 • SLIDELL, LA 70459

GENERAL MEMBERSHIP MEETING & CHRISTMAS PARTY



Tuesday, Dec. 13, 2011

Tammany Yacht Club

6:30 PM - 9:00 PM

FINANCIAL REPORT 4th QUARTER

BALANCE as of 1/1/11	\$14,984.39
INCOME	\$64,259.83
EXPENSES	\$48,633.78
BALANCE as of 11/16/11	\$30,610.44

Presidents Message:

Dear Neighbors:

The weather is great, and the sunsets are awesome! We are in the last quarter of 2011 and we will soon be in full swing of the holiday season. The year seems to be on fast forward and going faster each year. I can remember when I moved here six years ago and have had the honor of serving as a board member for the past five years with the last two as president. My term expires at the end of the year and very thrilled of all the accomplishments the board has achieved.

The board has been privileged to serving the community. The street sign project has continued with Constellation to Southern Star being the final section to be installed. Our green spaces were cut and maintained, fresh flowers were planted at both entrances as well as decorated for the seasons. We also purchased a back up security camera, continued to bargain for flood protection, and worked with state and local officials on removal of remaining underwater vessels from Katrina. It is important that we protect your investment. The best way to accomplish this is to make sure that we run fiscally responsible budgets and keep the neighborhood in good shape. At the same time our goal is to attempt to reduce cost where possible for our short and long range objectives. We have worked hard to improve the appearance of Eden Isle and will continue to do so. Dues will remain \$120 a year for 2012. Invoices will be mailed in January, and all are urged to commit. We encourage all homeowners to pay their dues.

Your HOA is always looking for committed and caring volunteers, so please contact any Board Member to find out how the Board functions. We have an excellent Board of Directors. Unfortunately, majority of our terms will expire at the end of this year. We need volunteers to replace those board members. We are looking for residents who care and don't mind giving their time and getting active in the neighborhood. Please contact any Board Member for information or to acknowledge your consideration prior to the December meeting. It was definitely a wonderful and heartening experience for me during my tenure.

To those of you who have helped in recent years, we appreciate your efforts. To those who have not jumped in, please give it a try. It's an easy way to meet more neighbors. A special thank you goes to Karen and Fred Thoede for decorating the entrances for the seasons - Phene Gambino for hosting her home for the "Night Out" function - Carol Wester for chairing our first neighborhood garage sale - Our state and parish representatives, Greg Cromer, A.G. Crowe and Richie Artigues for always listening to our concerns and looking out for our best interest - The St. Tammany Sherriff's Office for continuing to make our community safe - Tammany Yacht Club for their commitment in allowing EIHOA to conduct our quarterly meetings in their pleasant and inviting establishment - And especially to every homeowner for making Eden Isle the best waterfront property on the north shore.

In closing, I want to wish each of you a wonderful and blessed holiday season. Please take time to cherish the true meaning of the season, enjoy your friends and family, and take the time to reflect on the privilege we all have to live in such a wonderful nation, state and community.

Remember living in Eden Isle is truly "paradise on a half shell"!

-Cindy Franatovich

VISIT WWW.EIHOA.ORG

Eden Isles Homeowners General Meeting

September 13, 2011

Tammany Yacht Club

The meeting was called to order 7:15 pm.

The board members gave their reports.

1. Anne handed out the minutes from the last general meeting prior to the meeting. A motion was made and seconded to dispense with the reading of the minutes. There were no corrections voiced so the motion was passed unanimously and minutes were adopted.

2. Denise gave the treasurers report:

Financial Report for 9/12/2011

January 1, 2011	\$14,984.39
Income	60,478.50
Expenses	39,882.75
September 11, 2011	\$ 20,595.75

The total number of members for 2011 is 436.

3. Paul gave the green force update and said there had been minimal issues. The feedback at the meeting was very positive. There is a question of who maintains the area between Marina Drive and Pebble Beach. Paul will bring the answer to December General meeting.

4. Sarah asked for new members and gave them Welcome Bags. The association will continue to give out membership flags with paid dues.

5. Carol Wester and Anne Nash are heading the Garage Sale neighborhood event. It will be September 24th. The association will pay the advertising fees and put out signs listing each house who notifies us of their participation. All last minutes additions are welcome.

6. The Night out against Crime is scheduled for October 11. Phyne Gambino has graciously offered her house for this event so plan to join us at the corner of Eden Isles Dr. and Windward Passage.

7. The board is working towards completing the street sign project prior to the end of the year. There is one section left that includes Constellation to Southern Star Dr.

8. The Christmas Party will be held at the Tammany Yacht Club, Tuesday December 13.

9. The Eden Isles Boat Parade will be held Saturday, December 17th. Sailboats line up at the Tammany Yacht Club and Motorboats at The Dock.

10. There is still time to order "street signs" for your docks. The order forms are on the table in the rear of the room.

11. The 3rd quarter newsletter has been delegated as the annual Directory/Covenant edition. Dues received by June 1st will be included in the directory. Be sure to check off if you want your number published when you pay 2012 dues.

12. Holly Thoede has offered to develop a Facebook page for the association. More to come.

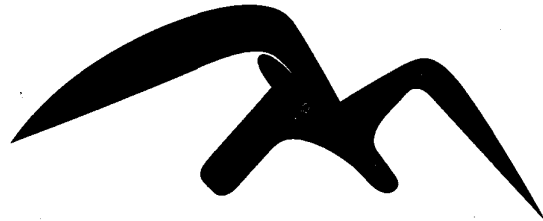
13. A representative from our neighborhood attended a Flood Protection Master Plan meeting recently. They reported back that the north shore is not protected. It is suggested that the homeowners ask this question when talking to their politicians prior to the election. Let them know how vital it is to have our neighborhood protected, including barriers at the Chef and Rigolets. Mr. AG Crowe, State Senator District 1, has sent a letter to Governor Jindal to escalate the issue of storm surge protection in our area and the need for resolution.

14. Mr. Greg Cromer, State Representative District 90, was in attendance and offered to stay after the meeting for any question our home owner may have, including the redistricting lines and flood protection.

15. The President informed the group that there were four board members stepping down this year and will need filling for the 2012 board.

16. The 50/50 raffle was a total of \$108 with \$54 going to a lucky homeowner. Multiple door prizes were also given away.

17. A motion to end the meeting was made and seconded. Meeting adjourned at 8:30pm.



EDEN ISLES CHRISTMAS BOAT PARADE

Saturday, December 17 at 7pm. Anyone dressing their boat with Christmas Lights may participate in the parade. Affiliation with a boating club is not required. The public may view the parade from the Dock Restaurant & Bar or next to the Eden Isles Fire Station by the Waffle House.

Boats should be ready in their respective staging areas for 6:30pm. Sailboats meet up at Phil's Marina Grill dock and Powerboats at the Dock Bar & Grill; overflow will just meander around the Oak Harbor Marina area until there is an opportunity to fall in line. The parade forms and gets under way near the Dock Restaurant & Bar. The parade will get underway at 7pm sharp. Monitor marine VHF channel 68 the evening of the parade for directions from the lead boat, The Christy Lee. He will call the start of the parade. Just fall in line after the lead boat when you see an opening and enjoy the parade.

The parade will head down the Fire Station canal to the Eden Isles bridge and continue to Windward Passage, turn around and come back the same route, also passing through the larger side canals and cul-de-sacs that are lighted with Christmas decorations. Canals without decorations are usually passed by so tell you neighbors to light it up so they will be on the parade route. The smaller canals are skipped because of maneuvering problems.

With courtesy given, please keep the parade uniform and not leave excessive gaps between boats but keep in mind all of Eden Isles is a no wake zone. If you leave the parade or get out of line, do not rejoin until the last boat passes. The parade is informal in that the route is subject to modification while in progress so be sure to monitor the lead boat.

The parade's lead boat highly encourages all skippers to attend the captains meeting the week prior to the parade. Call the Tammany Yacht Club for info or visit their website as they will have many members participating in the parade and will know the answers. Their website is listed in the "links" of the Eden Isles Homeowner's Assoc. website, www.eiho.org.

The Christmas Boat Parade does not have an official sponsor due to insurance and other reasons. In essence you are parading on your own and bear all of the implied responsibility.

Caution: All maritime laws apply for the parade. Children **MUST** wear life jackets. Flotation of some sort should be considered by everyone on board as well as spectators on the shoreline. Entering cold water can "freeze" the muscles in your body and cause even good swimmers to go down. It is nearly impossible to find someone under water at night in cold, cloudy water. Infants & toddlers especially go straight to the bottom. Please be careful while having fun.

KREWE OF BILGE MARDI GRAS PARADE **New Route- 2012**

The 2012 Krewe of Bilge Mardi Gras Parade is February 4th at 12:00. The parade is only for Krewe of Bilge member's boats. If a non member would like to offer his boat, the boat must be decorated and have a member on board or carry part of the "Court" such as a maid. All participants must attend the Captain's meeting prior to the parade. Please call Wayne Dunne at 985-641-9482.

The parade will start at Phil's Marina at 12:00 noon and head down the **RIGHT** side of the Fire Station canal to the Eden Isles Dr. bridge. The parade will turn around and return on the other side of the Fire Station canal. The parade will continue to Lakeshore Drive and pass the homes and lounges located on Hwy 11. The parade will past on the **LEFT** side of Hwy 11 canal to the bridge at the Hwy 11/Eden Isles entrance and turn around down the canal on the other side of Hwy 11 canal.

Krewe of Bilge Coronation Ball will be held Saturday January 21 at the Northshore Harbor Center. It is open to guest for \$50.00/person. Doors open at 6:00pm. Buffet from 7:00pm to 8:30. Crowning of the Queen at 9:00pm. Dance party 10:00 to 12:00.

Eden Isles Garden Club

Did you know that our sub-division has a Garden Club? Yes, 24 ladies are current members of this group who meet once a month. We discuss gardening and plants, flower arrangements, and donate to charitable causes. We participate with New Orleans Museum of Art in their April "Art and Bloom" (art interpreted with flower arrangements). Speakers are invited for gardening or current informational programs and also a few social gatherings are enjoyed by members and their guests. Planned are: a trip to the Racetrack, a cruise on Steamboat Natchez, a members' Christmas party and a flower arrangement class given by Yvonne Molinary and more.

The Garden Club will be checking all Eden Isles front yard gardens and judging "Yard Decorations of the Month" for December. This activity is a continuance of what was done before Katrina, with a Yard of the Month sign for best garden each month. The winner will receive a gift certificate from a local nursery and will have their garden pictured in The Eden Islander newsletter.

Eden Isles Neighborhood Yard Sale

The Eden Isles Neighborhood Yard sale was a huge success. Five families signed up initially but many more neighbors put their treasures out the day of the event. Thanks to Carol Wester and Anne Nash for organizing and placing ads in the newspaper. There were buyers from Mandeville and Slidell area. The Association hopes to organize the yard sale again next year.



Nancy Baldwin and Friends participating in the Eden Isles Neighborhood Yard Sale.

Where Can I Find Information About Eden Isles?

Question: How can I stop the soil erosion behind my bulkhead?

Question: Why Are There So Many Garbage Trucks Servicing Eden Isles?

Question: How long can I keep my boat in the water before it gets barnacles?

You can find the answers to these questions and many more by going to our website (eihoa.org) and looking in "Notices & Info"

Question: Has there has ever been a large fish kill in the Eden isles Waterways?

Question: Has a **Tornado ever Hit Eden Isles?**

You can find the answers to these questions and many more by going to our website (eihoa.org) and looking in "Publications/History" of Eden isles

Question: Where can I advertise items I have items for sale?

Question: Where can I place a lost pet notice?

Question: Where can I express my opinions about Eden Isles?

You can find the answers to these questions and many more by going to our website (eihoa.org) and looking in the "Public Forum" section

Question: Where can I check real time traffic conditions on the Twin Span?

You can find the answer to this question and many more by going to our website (eihoa.org) and looking in "Traffic Cam"

Question: Why should I join the Eden Isles Homeowners Association?

You can find the answer to this question and many more by going to our website (eihoa.org) and looking in "Our Mission"



A Touch of Italy Cafe



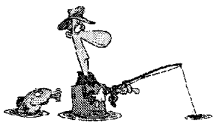
Open Tues - Sat 11am-1:30pm, Thurs-Sat 5pm - 8:30pm

134 Pennsylvania Ave, Slidell, LA 70458

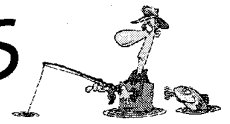
Phone: 985.639.0600

"Just off Front Street at the light between West Hall & Fremeaux"

www.kathrynandcompany.com



FISHING AROUND EDEN ISLES



Yes, I know most of us can wet a line from our own rear bulkheads and that we have the Twin Spans, the U.S. Highway 11 bridge and the rail road trestles almost within rowing distance from the mouth of the Eden Isles boat channel, but these locations may not always be productive fishing areas.

In fishing the bridges, you may have passed by or even over some of the newer locations without even knowing it. These are areas specifically designed to attract fish. These locations are marked with small buoys which usually go unnoticed. When in the area, I suggest that you give some alternative locations a try.

These locations are close to Eden Isles and can be an angler's delight. These alternatives are part of the **Louisiana Artificial Reef Program** that was placed through out the state by various state and sportsman organizations. They are specifically designed to attract and hold fish for the sports angler. That's right, they were designed with the sports angler in mind in an effort to promote the sport and accommodate the fishers in the area.

It's a short boat ride to several of the **ARTIFICIAL REEFS** in Lake Pontchartrain.

The first and oldest artificial reef in Lake Pontchartrain is located along the south shore of Lake Pontchartrain, just east of the New Orleans Lakefront Airport. It is made out of limestone rubble and is at or about $30^{\circ} 03.521' N$ Lat $\sim 089^{\circ} 59.608' W$ long. It is about 15 miles via boat from the Eden Isles boat channel at Lake Pontchartrain. It measures about 400 square feet and is composed of 3,300 tons of limestone. The limestone was placed on an old shell bed built by the Department of Wildlife & Fisheries in 1971.

St. Tammany Parish at this time has three different reef locations. Most of them are made of two different size dome shaped reef balls, or rather one half of a hollow ball. The hollow concrete structures have random sized holes through out the surface of the half spheres. They look like half of a "Wiffle" baseball and are placed in 12 to 15 feet of water. They all offer outstanding fishing experiences.

One of them, the oldest, is located near the north shore between the Lake Pontchartrain Causeway and Goose point. The reef is a rather small area and it is located at or about $30^{\circ} 16.296' N \sim 90^{\circ} 03.753' W$. There is a small yellow marker buoy over the site and that were several cane flags marking the general area. The location is about 2.8 miles due east (90° Mag) from the causeway, 3.8 miles SSW (199° Mag) of Green Point and about 4.4 miles west northwest (275°) of Goose Point and about 6.5 miles SSE (164° Mag) from the entrance to Mandeville harbor at the Causeway by the north shore. It is designated as N1 Reef Ball LP.

The newer St. Tammany reefs are both east and west from the N1 Mandeville Reef.

The St. Tammany WEST, Reef Ball reef is located at or about $30^{\circ} 18.348' N$. Latitude $\sim 90^{\circ} 09.000' W$. Longitude. It is about 5 miles south, St. southeast (71° Mag) from the mouth of the Tchefuncta River at Lake Pontchartrain and about 2.7 miles west of the Lake Pontchartrain Causeway.

The St. Tammany EAST, Reef Ball reef is at or about $30^{\circ} 13.456' N$. Latitude $\sim 089^{\circ} 56.838' \sim W$. Longitude. The balls are in the Lake about 2.5 miles south (170° Mag) from the mouth of Bayou Lacombe and about 11 miles from the Eden Isles channel at Lake Pontchartrain.

The newest of the Lake Pontchartrain artificial reefs is located near the South Shore Twin Span of Lake Pontchartrain. The NOAA Disaster Grant, DOTD, & CCA Reef, is actually in Orleans parish. But, it is the closest to Eden Isles. It is made from concrete rubble from the dismantled old twin span bridges. It is at or about $30^{\circ} 10.169' N \sim 89^{\circ} 50.744' W$. That is about 4 miles at a bearing of 223° Magnetic from the opening of The Eden Isles boat Channel at Grand Lagoon. The reef is marked by yellow buoys on each corner of the rectangle.

Use your depth finder and GPS unit and give them a try. They open new doors for Eden Isles anglers.

Unless otherwise specified, all positions are stated as H,DDD,MM.mmm and were determined using WGS 84 DATUM. All Headings / bearings / courses are stated in Magnetic Degrees and statute miles

Captain Paul



Pontchartrain Ace Hardware

3320 Pontchartrain Dr.
Slidell, LA 70458
Phone: (985) 643-4672
FAX: (985) 641-6051

Low Cost • No Contract
Licensed • Bonded • Insured

(985) 643-7437
Toll Free 1-866-647-3787

Pro's Pest Control Service Inc.

Environmental Specialists • Servicing a 4 Parish Area
Full service available, including reasonable termite control rates
"For A Change Get Your Money's Worth"

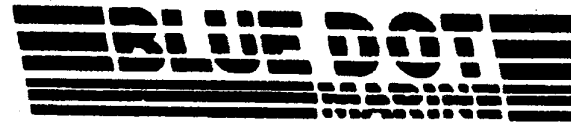
www.ProsPest.com

Roy Provenzano, Jr.
Owner

147 Eden Isles Blvd.
Slidell, LA 70458

Night Out Against Crime

The EIHOA organized Night Out Against Crime on October 11th . It was held on the corner of Eden Isles Drive and Windward passage. Many of the St. Tammany Sheriff officers were there to meet the families of our neighborhood and it was an excellent opportunity to let the officers know how much we appreciate them. A big thanks goes out to Phyne Gambino for hosting the event.



2409 Paris Road • New Orleans, LA 70129

RITCHIE COLLIGNON
(504) 277-7777

GUYS AND GALS OF EDEN ISLE:

IF YOU ARE SINGLE, OVER 50, ENJOY PEOPLE AND LOVE TO HAVE FUN, YOU WILL WANT TO JOIN "THE OVER FIFTY SINGLES SOCIAL CLUB".

WE HAVE MONTHLY MEETINGS WHICH INCLUDES FOOD, DRINK AND CARDS. WE ATTEND DINNERS, LUNCHEONS AND PLAYS. WE HAVE BBQ'S, COCKTAIL PARTIES, KARAOKE AND BOAT RIDES.

IF YOU ARE INTERESTED CALL...
CAROL WESTER ✽ 985-641-6731
OR
PHYNE GAMBINO ✽ 985-645-9242



A Jazzy Dog Pet Grooming

**3995 Ponchartrain Blvd.
Slidell. LA. 70458**

A Jazzy Dog Pet Grooming is
your neighborhood pet salon

Pickup & Delivery Service Availability
Oak Harbor, Eden Isles, Lake Shore Areas
**All Services available, prices vary by size
and condition of coat**

Texas Allbreed Grooming School
Certified Groomer

Between CPB Bank and Dante's Pizza
Call us NOW for appointments
985-726-0116

LAUNCH MARINE BOAT STORAGE & SLIPS

\$50 - \$200 PER MONTH

Consignment Sales

Full Service Boat Facility

Serving Your Waterfront Community

4646 Pontchartrain Dr. • Slidell, LA 70458

Office: 985-707-3585 • Cell: 985-707-3585

1stLaunch@gmail.com

Get Your Boat Ready For Winter!

LUXE
VIP HAIR ROOM

3009 Pontchartrain Drive • Slidell, LA

985.288.5588

*Gift Cards &
Christmas
Baskets
Available!*
Keep Christ in Christmas



color | highlights | cuts | waxing | extensions | make-up application | threading hair removal

Features
Global Keratin Hair Taming System
WALK-INS WELCOME!

\$50 off

**GLOBAL KERATIN
Hair Taming System**

Must present this Global Savings ad.
May not be combined with other offers.
Not valid with other discounts.
Offer expires 1/31/12

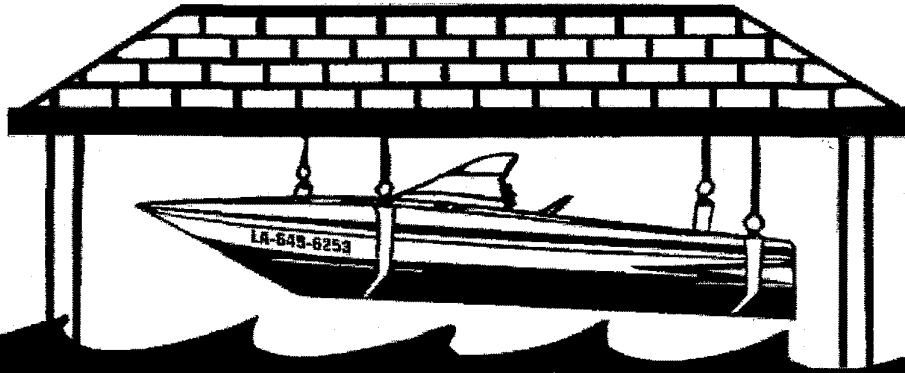
CINDY M. CONSTRUCTION, L.L.C. dba

C & M Construction

BOAT HOISTS • BOAT HOUSES
DOCKS & DECKS

INSURED

INSURED



985-649-6253

SLIDELL, LA

DENNIS KNECHT

NEW ORLEANS, LA

SLIDELL EASY PAY TIRE

Fall Special



Tune-ups • Custom Wheels Suspension
Alignments • Brake • Air Conditioning • Electrical
Cooling Systems • Fluid Changes • Transmission

HELP AVOID COSTLY

BREAKDOWNS!

- Lube, Oil Change & New Filter (Up to 5 quarts of a major brand oil)
- Complete Vehicle Inspection (Including condition of the brakes)
- Top Off All Fluids Under The Hood
- Complete Four Tire Rotation
- Check Tread Depth & Adjust Tire Pressure
- Check Antifreeze
- Examine All Belts & Hoses for Cracks & Proper Tension

\$29⁹⁵



Hours:
Monday - Friday
7:30 am - 6:00 pm
Saturday
7:30 am - 2:00 pm
Closed Sunday

3165 Pontchartrain Dr. • Slidell, LA • 985-643-7766

Slidell Area – Web Links & Phone Numbers	
St Tammany Parish Govt.	985 898-2362
Kevin Davis, parish president	985 898-2362
Richard Artigue, council - dist.13	985 649-8952 / 768-1293
Jerry Binder, council – dist.12	985 641-7064
Tax Assessor Office	985 809-8180 / 646-1990
Code Enforcement V	985 898-5214
- Chris Brown, csbrown@stpgov.org	985 249-7135
Public Works	985 898-2557
Permits	985 646-4166
Clerk of Court	985 809-8700 / 643-6969
Sheriff's Dept.	985 809-8200 // 911
- Public Relations, Brad Hassert	985 726-7801
Fire Department, District #1	985-649-3665 // 911
State of Louisiana	
State Police Troop-L	985-893-6250 // 911
Governor's Office, Bobby Jindal	225-342-7015
- Louisiana State Legislature	
Greg Cromer, Dist.90 State Rep.	985 645-3592
A.G. Crowe, Dist-1 State Senator	985.643.3600
- Dept. of Environmental Quality	866 896-5337
- Wildlife & Fisheries	800 442-2511 / 985 882-0027
City of Slidell	
Chamber of Commerce	985.643.5678
CLECO - Electric Power	800 622-6537
Coastal Water Works	985 641-7932
CWS - Garbage	985 781-3171

Note, if you access www.eihoa.org - "links", clicking on the blue text will access each department's web site.

Board of Directors

BOARD MEMBERS CURRENT ON 2-24-2011

PRESIDENT	Cindy Franatovich	Cindy.Franatovich@sbpsb.org	985-201-7383
V.P. & Director of Greenspaces	Paul Titus	pstjr@bellsouth.net	985-649-6678
SECRETARY	Anne Nash	anashanash@gmail.com	504-669-2466
TREASURER	Denise Berthelot	berthelotjd@att.net	985-641-1727
DIRECTOR	Ken LaNata	kwlanata@bellsouth.net	985-781-6442
DIRECTOR	Sarah Mull	csmulls@yahoo.com	985-718-2904
ADVISORY	Liz Hoffman	mistymol@aol.com	985-643-9429
NEWSLETTER	Cathy Drolla	Cathy Drolla	
SPECIAL PROJECTS COMMITTEE	Lee Longstreet Thomas Thompson	lee@datakik.com	504-283-4706

Eden Isles Homeowners Association

Annual dues \$120.00, due the beginning of each year
(everyone is welcome & you may pro-rate if you moved in mid year)

Homeowners Name/s: _____

Property Address: _____ Slidell, LA 70458

Mailing address, if different: _____

Home Phone: _____ Cell number: _____

Email Address: _____

Do you wish phone number listed in the directory - Yes / No; if yes please circle which number to list.
(for security reasons, we recommend listing your phone number so your neighbors can contact you if they see suspicious activity)

Would you like to serve on the board of directors or on a committee? – Yes / No

Please mail your annual dues to: EIHOA P.O. Box 2746 Slidell, LA 70459

Thank you for your support

Comments:

A note about dues:

The parish does not maintain or fund the maintenance of the public spaces of our neighborhood, your homeowners association does !

Monies collected are used for cutting the grass in all of the public green spaces through out the neighborhood. Lighting, maintaining and seasonal decorations of the signage. Installation & maintenance of the street signs. Cost, repair and utilities associated with the security cameras. Planting & maintaining the landscaping. Publications, posters, newsletters, postal service & postage. State fees regarding the entity of the association. Water testing Lab expenses. Expenses of holding meetings. Insurance & Legal.

Note: Board & committee members are uncompensated neighborhood volunteers whose only interest is contributing to the well being of the neighborhood as their time permits.

Those not contributing to the upkeep of the neighborhood (paying of dues) create an undue burden in trying to implement all the association is charged with doing. The more homeowners that participate, the more your association can accomplish. The current level of financial participation does not leave our budget with the funds necessary for the expensive legal process of enforcing the covenants they way they should. Although the covenants are a legally binding part of your deed, without sufficient association funding, the burden of enforcement rest with each individual homeowner. Fortunately, most of the covenants have mirror parish laws which you can request the parish enforce. These are notated on the EIHOA "guide to the covenants" listed on our website.

Although Katrina "whacked" us all, your homeowners association is making a comeback, just check its website at www.eiho.org to see all that is going on.



Cathy Drolla

REALTOR

985-290-1313

EDEN ISLES
RESIDENT
SINCE 1986

LIST NOW
For Only

4.5%

COMMISSION



Call for Details

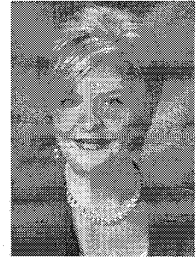
Finding a good real estate agent can be
like finding a needle in a haystack.

Need One? Call us

985-290-1313

985-774-3272

ABEK 646-2111
real estate



Beth Kobeszko

Broker/Owner

985-774-3272

EDEN ISLES
RESIDENT
SINCE 1992

Eden Isles Homeowner's Association

P.O.Box 2746

Slidell, LA 70459

PRSR STD
U.S. POSTAGE
PAID
CUSTOM MAILER

10 *****ECRWSH**R-024
RESIDENT

6

3