

## PRESIDENT'S MESSAGE

Dale Wood



This is one of those occasions in which I have to revisit an old subject - PARKING IN THE NEIGHBORHOOD. Several things have happened relating to parking issues in the past couple of months. Therefore, I am writing to keep you informed of Association efforts and to encourage your support of these efforts.

There are Parish Ordinances that specifically apply to District 13 (the Council District that we live in). In part, those Ordinances state:

"It shall be unlawful for any person or entity to park or abandon boats with trailers, trailers of any kind, motor homes, and/or vehicles in excess of six (6') feet in width for a period of over 24 hours."

"It shall be unlawful for any person or entity to park any vehicle in a roadway or parish right-of-way that hampers the flow of traffic or creates a traffic hazard whereby a moving vehicle must

enter the oncoming traffic lane in order to pass; or in any way obstructs the vision of moving traffic or sight triangle of an intersection."

As we began this year, the Association had worked out a procedure with the Parish's Code Enforcement Office whereby these Ordinances were being enforced. When the chief of Code Enforcement took another job, enforcement fell apart. The new chief was not aware that specific Ordinances existed for District 13. However, once I informed him of their existence, he would not enforce them because he had a problem with the FORM that was being used in the procedure. The FORM referred to an ABANDONED vehicle as opposed to a PARKED vehicle.

So... the FORM was sent to the District Attorney's Office for revision ( I guess it was just too complicated to strike out the word - ABANDONED- and replace it with the word - PARKED). I subsequently had several conversations with the chief of the District Attorney's civil division. He also was not aware that specific Ordinances existed for District 13 and expressed that he was uncomfortable with the existence of district-specific Ordinances. He, therefore, DECIDED TO COMPLETELY REWRITE THE ORDINANCES! He also promised a "public hearing" on the matter in an effort to end up with a "better" parish-wide ordinance.

I decided to turn to the Councilman for the District, Louis Pendarvis (the Association's

Immediate Past President) and myself scheduled a luncheon with the Councilman. The Councilman, the just-resigned member of the Planning and Zoning Commission for the area and the newly-nominated, replacing member of the Planning and Zoning Commission were in attendance. The parking issue was raised. Louis and I were informed that the issue was a "hot potato" and it was suggested that the Association do two things. First, attempt to resolve the problem by enforcing neighborhood covenants. Second, via a petition campaign, GET 75% OF THE RESIDENTS IN EDEN ISLES TO AGREE TO ENFORCEMENT OF THE ORDINANCES!

Quite honestly, I thought that this response was ridiculous. The Ordinances in question are existing law. Since when do you have to get an opinion poll on whether or not to enforce the law?

At this point, I have sought enforcement through Parish Administration, Parish Law Enforcement and the Parish Council. In other words, I've been to every branch of government AND EVERY branch cannot manage to find its way clear to enforce simple Parish Ordinances.

### HOMEOWNERS MEETING

Tuesday, November 27, 2001

Tammany Yacht Club

7:00 PM

What is most disturbing is the fact that the Parish WAS enforcing the Ordinances! AND...not only did the Parish know how to enforce the Ordinances, they also obviously had the resources to do so!

As a matter of note, throughout these events, I am having ongoing discussions with the Association's Board of Directors. In a nutshell, the Board was appalled by the petition campaign suggestion. Therefore, at the Board's October meeting, Board members and Advisory Committee members UNANIMOUSLY authorized the writing of a strongly-worded letter to the District's Councilman demanding enforcement of the Ordinances. The Board also began working on plans to elicit the help of surrounding neighborhood associations.

Language for the letter to the Councilman was finalized and just prior to the promised "public hearing" (October 15-3pm-Council Chamber) on the Ordinances, the language for the letter was incorporated into an email that was sent to members of the Eden Isles Garden Club. The email was encouraging them to attend the "public hearing" if possible. (By the way-How many people do you think can show up at a "public hearing" held during normal business hours? I wonder if the Parish is truly interested in our opinions?)

A member of the Garden Club took the email to the Councilman asking that efforts to enforce the Ordinance be undertaken. The Councilman was not happy with the contents of the email and requested time to speak to the Board of Directors at their next meeting.

Time was set aside on the agenda and the Councilman appeared at the Board's November 12th meeting. The Councilman distributed the email to the Board members and made some remarks. It was obvious that the Councilman was not aware that the Board was previously aware of the contents of the email and that its language was UNANIMOUSLY authorized at the Board's prior meeting. Apparently, the Councilman was under the impression that Mr. Pendarvis and

myself were on a two-man crusade AND that there was no support for enforcement.

I am not writing this to embarrass anyone! The Association has spent a lot of time and resources in trying to clean our neighborhood up. Ray Miller and myself have spent countless hours distributing pamphlets in the streets asking people not to park in the streets.

**THIS IS A SAFETY ISSUE!** I've talked about this issue ad infinitum in this newsletter and at general membership meetings. The pamphlet that I put on "things" parked in our streets was clear and concise in its message! The pamphlet said:

"The Eden Isles Homeowners Association AND your neighbors would appreciate your considering not parking in the street. **IT CREATES A HAZARD!**

An empty trailer is typically very low to the ground and does not have adequate reflectors on it. Therefore, it is very difficult to see (an empty trailer) at night or when it is raining.

Many boats are painted or covered in colors that make them difficult to see at night or when it is raining.

Cars, trucks, boats and motor homes parked in the street prevent you from seeing what is behind them.

How are you going to feel if a child is seriously injured or killed by an oncoming car if that child runs out into traffic from behind something you have parked in the street?

How are you going to feel if a neighbor is seriously injured by running into the back of something you parked in the street because they could not see it at night or during a rain storm?

**THINK ABOUT IT!** We hope that you will opt to make YOUR neighborhood a safer place to live and park somewhere other than in the street."

Parish officials have said to me that the Association is going to hurt those people that have more vehicles than can fit in their driveway. **THIS IS NOT TRUE!** The vast majority of the homes in Eden Isles have double-car garages and, therefore, have double-car

driveways. You can fit at least SIX vehicles in this space!

In fact, in returning home from the Crime Committee's initial meeting last evening, I made a point of observing EVERY car, truck and trailer parked in the street on Eden Isles Boulevard. EVERY SINGLE residence that had something parked in front of it HAD space in the driveway for that something!

Furthermore, it is quite CLEAR that the Ordinances in question are trying to address a safety issue. That is why the Ordinances use language like: "hampers the flow of traffic" "creates a traffic hazard" "obstructs the vision of moving traffic"

The objection raised by Parish officials are warrantless and the Association IS TIRED OF GETTING THE RUN AROUND!

Henry Clay, one of America's most famous statesmen, said - "Government is a trust, and the officers of the government are trustees; and both the trust and the trustees are created for the benefit of the public."

Well, our trust and our trustees are failing us on this issue AND we need to let them know how we feel! Immediately behind this message is a form letter for you to sign. It asks our Parish government to start enforcing Parish Ordinances 12-002.00 and 13-002.01. Please have every member of your household sign the letter and fax them to me at 649-3272 OR place them in one of the Associations mailboxes located at our entrances OR mail them to me OR bring them to our next general membership meeting. The Association will accumulate the letters and forward copies to each branch of Parish government.

Don't forget. Our next membership meeting is on November 27 (7pm) at the Tammany Yacht Club. I hope to see you there. If I don't see you, have a happy holiday season.

# Garden Club

What has happened to 2001? It's almost gone and once again it is time to be thinking about the holidays and...yes, it is time to think about SANTA. Santa will be arriving to the Marina Cafe by boat again this year on December 16th. He will be there from 1PM to 3PM. Please bring your children, or grandchildren to meet Santa. Last year the children received pictures of themselves with Santa in addition to a small sack of candy. There will be drinks and cookies to help celebrate Santa's arrival.

The yard of the month winner for October was 200 Constellation with 127 Carina Circle coming in second and third place was 105 Rampage Loop. The November winner was 113 Rampage Loop, 105 Rampage Loop came in second and 215 Blackfin cove was third. October judges were Beverly Chauffe, Marie Perret, Mary Faught and Hilda Vaughn. November judges were Hilda Vaughn, Judy Chamberlin, Phyllis Mitts and Marion Frasio.

In mid-September, 13 members of the club went to visit Judy Leonard's garden. It is on a lovely piece of property backing up to a bayou and has areas planted with butterflies and hummingbirds in mind. Judy had also planted a beautiful herb garden and her peaceful Oriental garden is a delight to all the senses. We ended our visit about lunchtime so...naturally we invited Judy to go to lunch with us.

A few days later Hilda Vaughn, Yvon Molinary, Ann Courrege, Lillian Williams, Linda Triay, Pam White and I went to the Covington Farmer's market to buy plants, vegetables and great bread. If you haven't been there it is a very good farmer's market and the people are fun to talk to. The day we were there Dan Gill was giving a talk.

Our October meeting was at Edna Mae LeBlanc's home with Marie Perret, Myrlene Robinson and Gloria Accardo serving as co-hostesses and preparing a wonderful lunch. Our speaker was Nancy Kennington who presented a program on Xmas decorations.

We met a few days later for our first workshop of the year to make our Xmas angel decorations for "our" tree in Griffin Park. If you have never been to Slidell's Christmas Under the Stars, make it a point this year to take your children, grandchildren or just go by yourselves to see the trees, trains and gingerbread houses from December 9-18. I think you will really enjoy it.

Crosby Arboretum in Picayune, MS was our next trip schedule. Linda Triay, Ann Courrege, Wylene Heatherly, Phyllis Mitts, Yvon Molinary, Norma Hastings and I enjoyed a guided nature walk through a small portion of the area. This area is truly the place to visit for information on native plants and is staffed with very knowledgeable people. It is a place well worth the 30 minutes it takes to drive there. There will be a program for kids on January 5th called Mississippi Mudworking. I'm not sure if there is a charge for the program so call the Arboretum.

On October 13th, in conjunction with Slidell's Arts Evening, our club helped initiate Slidell's own version of Art in Bloom at the Art League's building. Four of our members, Linda Cunningham, Mary Faught, Yvon Molinary and Norma Hastings "interpreted" paintings. We had two arrangements for October 13th and three arrangements for the "rain date" on October 20th. Again if you haven't made it to Slidell's Art Evening in Olde Towne, you might want to put it on your calendar for next year. The floral arrangements gave an added dimension to the evening.

On October 16th, nine members and two guests traveled to Natchez, MS for the Pilgrimage. Some of us stayed one night and others stayed for two. We all enjoyed going through the homes and gardens, meeting the owners and the local garden club members. A number of the homes on tour are owned and maintained by the Natchez Garden Club. We had a plantation dinner at the Carriage House Restaurant on the grounds of Stanton Hall the first evening complete with music by Amos Polk's Voices of Hope Spiritual Singers. The next evening we had dinner in a castle. You just never know where this group will go next...

Back home in Slidell on October 26th, Wylene Heatherly, Ann Courrege, Ron and Lillian Williams and I helped other local garden club members clean up Greenwood Cemetery for All Saints Day. I have always felt that a little community service never hurt anyone and everyone is invited to bring your rakes, clippers and gloves next year. You don't need to be a member of any garden club to be welcome, just show up.

Our next regular meeting was at Linda Cunningham's on November 7th. We don't normally have theme meetings but we did dress western and had a neat chuck wagon lunch prepared by Betty Newman, Nell Forstall, Norma Hastings and Judy Chamberlin. In addition to the slide show on her hummingbird garden given by Mary Mehaffery, we drew the winner of our annual stained glass piece which was made for us by our own Linda Triay. This year the red hibiscus and hummingbird piece was won by Karen Kemper from Avondale. I was very jealous.

The next day, November 8th, the Magnolia Forest Garden Club invited us to visit their in-house flower show. It was based on interpreting movies like Harry Potter and Crouching Tiger-Hidden Dragon. Those ladies are creative!!!

On November 14th, eight members went to the Garden District for a walking tour of the area. We learned a lot of history about the area, the homes, the gardens and the cemetery across from Commanders. A delightful morning which ended with lunch (of course) at Bravo. What can I say, you can't travel on an empty stomach.

Our club will be quite active in December decorating our entrances, volunteering in Slidell, preparing for Santa by Boat and going to New Orleans

for Tea at the Windsor Court and a Christmas tour in the French Quarter. Yes, we will be taking most of January off and "recouping" from our labors.

Gardening hint: Camellias may be set any month of the year if they are properly planted, watered and cared for. However late fall through early spring is considered the best time for transplanting them in St. Tammany Parish. Adequate moisture is an absolute necessity in transplanting.

As our club members start preparing for their own holidays, we invite you to bring your children or grandchildren to meet Santa on December 16th and to visit Slidell's Christmas Under the Stars beginning December 9th. Christmas judging will be the week before Christmas, so please remember to turn on your lights in the evening during that week. On behalf of the Eden Isles Garden Club, I extend to all of you our very best wishes for a safe and happy holiday season. Till next time.....June Collins



**October Garden of the Month -  
200 Constellation**



**November Garden of the Month -  
113 Rampage Loop**



**October Hostesses - Edna Mae LeBlanc, Gloria Accardo, Marie Perret and Myrlene Robinson**



**November Hostesses - Norma Hastings, Betty Newman, Linda Cunningham, Nell Forstall and Judy Chamberlin**



**Members enjoying a much needed rest while visiting the beautiful homes of the Natchez Pilgrimage. Left top row: Lillian Williams, Jane Bachemin, Marlen Maylon, Nunny Levis, Gail Smith, Millie Hoffman, June Collins, Ann Courrege, Linda Triay, Judy Chamberlin**

**TO MY PARISH GOVERNMENT:**

**I AM A CONCERNED CITIZEN**

**THERE IS A SAFETY ISSUE IN EDEN ISLES  
THAT REQUIRES YOUR ATTENTION!**

**PARISH ORDINANCES 13-002.00 AND 13-002.01  
ARE NOT BEING ENFORCED IN EDEN ISLES!**

**PLEASE TAKE WHATEVER ACTION IS  
NECESSARY TO HAVE THESE ORDINANCES  
ENFORCED IMMEDIATELY!!!**

NAME (PLEASE PRINT): \_\_\_\_\_

STREET: \_\_\_\_\_

CITY: \_\_\_\_\_ STATE: \_\_\_\_\_ ZIP: \_\_\_\_\_

PHONE: \_\_\_\_\_

SIGNATURE: \_\_\_\_\_

PLEASE RETURN THIS LETTER TO ONE OF THE ASSOCIATION'S MAIL BOXES

- OR -

**MAIL OR RETURN TO:**

**DALE WOOD  
222 SOUTHERN STAR  
SLIDELL, LA 70458**

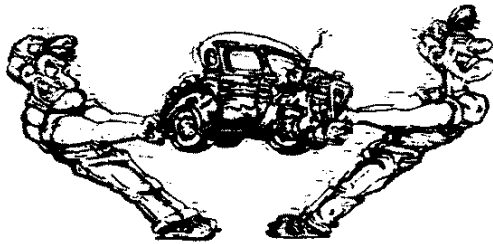
- OR -

**FAX IT TO:  
DALE WOOD  
649-3272**

# Frank's Accurate Body Shop

Insurance Claims  
Welcomed

All Work  
Guaranteed



641-1454

684 E. I-10 Service Rd.  
Slidell, LA 70461

Owned and operated by  
**FRANK RINAUDO**  
Eden Isles Resident

**WE TAKE THE DENTS OUT OF ACCIDENTS**

## CYPRESS COVE BOATING CENTER

BOAT SALES & SERVICE  
3663 Pontchartrain Drive  
Slidell, LA 70458

*Authorized Yamaha Sales & Service  
Duracraft, Regulator, VIP  
643-6668*

Low Cost  
No Contract

Slidell 1-504-643-7437  
Free Call

### *Pro's Pest Control Service Inc.*

Environmental Specialists — Servicing A 4 Parish Area

**Roy Provenzano, Jr. - Owner**  
147 Eden Isles Drive  
Slidell, LA 70458

Full Service Available  
Including Reasonable  
Termite Control Rates  
Licensed • Bonded • Insured

# Michael's

## RESTAURANT & LOUNGE

**Now Booking  
Holiday  
Parties**

*"Where Great Food & People Come Together"*

*New World Creole Cuisine  
Intimate Waterfront Dining  
Outside Patio Dining  
Boat Dock*

Seafood • Veal • Pastas • Salads  
The Best Steaks in Town

*Come experience Executive Chef Michael Frederic's new restaurant and  
award-winning cuisine. Setting culinary standards on the Northshore since 1996.*

### **Michael's Catering**

Full service catering on/off site  
(The original Frederic Catering)  
4820 Pontchartrain Drive

649-8055

*(Located @ the old Annabelle's Restaurant across from Carr Drive)*

## TAX TIP

by M. Dale Wood Jr., CPA, MS\*  
(\* - in Taxation)

The Economic Growth and Tax Relief Reconciliation Act of 2001 (President's Bush's recently passed tax legislation) contains provisions that significantly change the rules for EDUCATION IRAs. Starting in 2002, you can contribute up to \$2000 annually to an EDUCATION IRA (the previous limit was \$500). The new limit applies to each child or grandchild. In other words, if you have three kids, you can put away \$6000. Earnings on an EDUCATIONAL IRA build up tax-free. Funds can be used for college expenses AND elementary and secondary school expenses.

## SANTA CLAUS IS COMING!!!

SANTA CLAUS WILL BE THE GUEST SPEAKER AT THE ASSOCIATION'S GENERAL MEMBERSHIP MEETING ON NOVEMBER 27 (Tammany Yacht Club - 7pm). SANTA WILL BE ACCEPTING LETTERS FROM KIDS WITH THEIR CHRISTMAS WISHES. BRING THE KIDS AND THE GRANDKIDS. EACH WILL GET A SURPRISE FROM SANTA!

## CRIME REPORT

The crime report from the St. Tammany Parish Sheriff's Office for September 14 through November 11 is as follows:

- September - Criminal damage (1 call)  
Traffic violation (1 call)  
Theft (4 calls)  
Gunshots (1 call)  
Burglary (1 call)
- October - Criminal damage (2 calls)  
Criminal trespass (1 call)  
Criminal mischief (2 calls)  
Theft (4 calls)  
Warrant arrest (2 calls)  
Hit and run (1 call)  
Attempted burglary (2 calls)
- November - Theft (1 call)  
Warrant arrest (1 call)  
Burglary (1 call)

The Association would like to thank Captain McCormick for her efforts in gathering this information. Why don't you give her a call (898-2329) and let her know that you appreciate her efforts.

## ARTICLES

THIS IS YOUR NEWSLETTER! If you would like for the Association to publish your article in the newsletter, call the HOTLINE at 781-0091.

## MAIL BOXES

Want to save a stamp when mailing in your dues? Want to save a stamp on that petition? Want to make suggestions to the Association? DROP IT IN ONE OF THE MAILBOXES AT THE ENTRANCES TO THE NEIGHBORHOOD! At the Marina Drive entrance, the mail box is on the Eden Isles sign as you are entering the neighborhood. At the Highway 11 entrance, the mail box is attached to the community billboard.

## WARNING TO BOATERS!11

All waterways in Eden Isles, including Moonraker Lake and Moonraker Canal have speed restrictions in them. IF YOUR WAKE CAUSES DAMAGE TO ANOTHER BOAT OR BULKHEAD, NO MATTER WHAT YOUR SPEED, YOU MAY BE HELD LIABLE FOR THE DAMAGE.

If you observe a violation, call the St. Tammany Water Patrol (641-4100) or the HOTLINE at 781-0091.

!!GIVE YOUR NEIGHBORS A BREAK  
- THROW NO WAKE!!

## CRIME COMMITTEE

The Association has formed a Crime Committee. The purpose of the Committee is to study and make recommendations to the general memberships as to measures that can be taken by residents to reduce crime in our neighborhood.

The committee had its initial meeting on November 15. Members of the committee are Marion Bencke, Gary Carter, Carolyn Guarino, Carol Hopson, Ray Miller and Dale Wood. Mrs. Hopson was elected to chair the group. The committee's work and recommendations will be reported in future editions of the Eden Islander.

# ACE Hardware

PONTCHARTRAIN HARDWARE & LUMBER, INC.

Tools Paints Electrical Plumbing Lumber Lawn & Garden Marine

Devoe

Benjamin  
Moore

**THANKS TO YOU WE'RE WORKING!**

Mon. - Fri.: 7:30 - 6:00

Saturday: 7:30 - 5:00

Sunday: Day of Rest!

Phone: (504)-643-4672

3320 PONTCHARTRAIN DRIVE - SOUTH SLIDELL-

# PHIL'S



# MARINA CAFE

OAK HARBOR

1174 HARBOR DRIVE  
SLIDELL, LOUISIANA 70458

641-0464

**NORTH SHORE MACHINE SHOP INC.  
PROPELLER REPAIR**

INBOARD



OUTBOARD

649-6160

HAROLD GARRITY  
Owner

4510 Pontchartrain Dr.  
Slidell, LA 70458



(504) 863-3642

M.P. "PETE" SCHNEIDER, III  
REPRESENTATIVE  
DISTRICT 90

HOUSE OF REPRESENTATIVES  
STATE OF LOUISIANA

P.O. BOX 400  
SLIDELL, LOUISIANA 70459



## ANOTHER BAR ON HWY. 11 ???

Work was underway at the site of the former Eden King restaurant to convert the building into a night club. The Association's President, Dale Wood, and Immediate Past President met with the club's owner and consultant in an effort to get the club's conditional uses documented, in writing, with St. Tammany Parish.

Several residents called Mr. Wood expressing concerns about the opening of another bar on Hwy. 11. Residents were primarily concerned about safety and noise issues. These calls prompted the meeting between the Association and club representatives.

At the meeting, the club's owner agreed to document several conditional uses with the Parish and to a procedure that would be followed to accomplish this. On the day the Parish Council met in October, the club's owner called Mr. Wood and backed out of the agreement that was previously made.

As of the date of this writing (November 16), construction at the site appears to have ceased. Inquiries were made concerning the work stoppage. A member of the St. Tammany Sheriff's Office informed the Association's Board of Directors that drug related arrests were made at the site and that this accounted for the work stoppage. Apparently, illegal substances were being manufactured on the premises while construction was underway.

Association representatives have contacted Parish officials inquiring as to whether or not the conditional use permit for the facility can be revoked. Crime in the neighborhood is a great concern to the residents. The last thing we need are people driving through our neighborhood on their way to pick up their fix on Highway 11!

The Association suggests that you call your Councilman - Coach Thomas (649-0549) and let him know that you are concerned about this facility opening on Highway 11.

## SEA SCOUT SKIPPER

John Erickson (Eden Isles Boulevard) has been the Sea Scout Skipper in the area for 14 years. Regrettably, John has decided to retire.

If you know of someone that may be interested in filling the position, please call John at 643-8768

Thanks John! We appreciate your service to the community.

## TRIFOCALS

A pair of trifocals were fished from the dock at 214 Valiant Lane. This pair of glasses looks to be quite expensive. To claim them, call Chuck at 646-0130.



**Hamburgers, Po-Boys, Nachos,  
Salads, & Daily Specials**

### HOURS

#### Monday

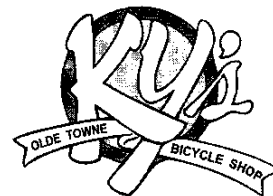
11:00 a.m. - 10:00 p.m.

#### Tuesday - Thursday

11:00 a.m. - 11:00 p.m.

#### Friday - Saturday

11:00 a.m. - Midnight

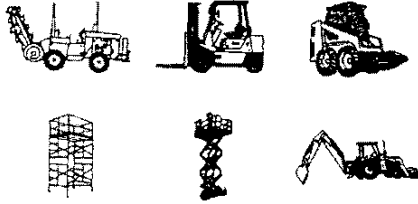


2267 Carey Street  
Slidell, Louisiana

**641-1911**

**Open til Midnight  
on Weekends**

# NEED TOOLS & EQUIPMENT? CALL TUFF...WE CAN HELP!



## TUFF EQUIPMENT RENTALS INC.

If You Don't See What You Need  
**CALL US**

# 643-5424

- Air Tools
- Air Compressors
- Compaction
- Concrete Equip.
- Demolition Tools
- Earth Moving Equip.
- Floor & Carpet Care
- Forklifts
- Generators
- Jacks
- Ladders
- Lawn & Garden Tools
- Lifts & Hoists
- Light Towers
- Plumbing Tools
- Pumps
- Pressure Washers
- Sanders
- Saws
- Scaffolding

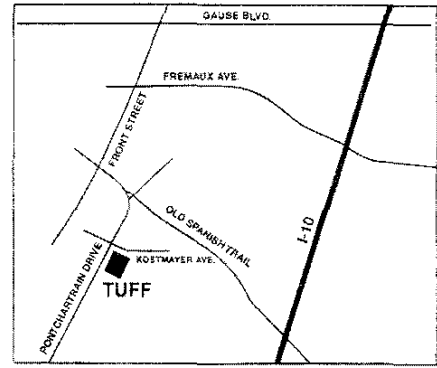


**Give Us A Call Now For**

- ✓ Knowledgeable Sales Personnel
- ✓ Modern Up-To-Date Equipment
- ✓ Free Professional Instruction On Equipment
- ✓ Delivery & Pick-Up Service

**NEW LOCATION**

**3300 PONTCHARTRAIN DR.  
SLIDELL, LA 70458**



**24 HOUR EMERGENCY  
SERVICE**

Open: M-F  
7:00AM - 4:30PM  
Saturday 7:00AM - Noon

For photos & specs on equip.  
[www.tuffequipmentrentals.com](http://www.tuffequipmentrentals.com)



**RESTAURANT**

1398 Front St., Slidell, LA  
(504)643-7964

**"X Marks the Spot, for the BEST Food Around!"**  
Located in The Old Icehouse--123 Year Old Slidell Landmark

Specializing in All-You-Care-To-Eat Catfish Plus Full Seafood Menu

CERTIFIED ANGUS BEEF Steaks

Boiled Seafood in Season -----Live Maine Lobster

Sandwiches-----Special Luncheon Menu

Unique Private Banquet Room

Quaint Pub Featuring Happy Hour 4-7 Monday-Saturday

Sun. - Thurs 11:00 - 10:00 Fri. - Sat. 11:00 - 11:00

Bobby & Terri Juge, Owners & Operators

CHEMICALS

SERVICE

REPAIRS



**Warren English**

SWIMMING POOL SERVICE

Phone: (504) 726-0334

114 Blackfin Cove • Slidell, LA 70458

# Petals & Stems

F L O R I S T

320 Sun Valley Dr. • Slidell LA 70458  
(504) 781-4585

**CONCERNED MAIDS**



GWEN LEITZ KNOWLES



Old Fashioned Cleaning At Reasonable Rates  
Hours 8:00 AM - 5:00 PM  
References Furnished

Office: (504) 649-3836

Beeper: (504) 847-8538

## PHONE BOOK UPDATE

As reported in previous issues, Ann Courge, the Association's Secretary, is in the process of creating a new directory for the area. The last directory was published in 1997. This 2002 directory will go to all residents that live in Eden Isles, Oak Harbor, Clipper Estates and Lakeview Drive.

The phone book is in its final stages of completion BUT a few spaces for advertising still remain. If you hurry, you may be able to snatch one up. Pricing begins at \$50 for a "business card" style ad. Take a look at the complete price list included in this issue. If you or your business are interested in advertising in the directory, call the HOTLINE at 781-0091.

## DIRECTORY PRICING FOR ADS

Ad Description	Cost	Set up
1. Front Cover (Color)	\$1200	\$100
2. Back Cover (Color)	\$ 900	\$100
3. Inside Front Cover (B&W)	\$ 700	\$100
4. Inside Back Cover (B&W)	\$ 700	\$100
5. Back, Back Index Page (B&W)	\$ 500	\$100
6. Map with Ad (Middle of Directory (Color)	\$ 500	\$100
7. Watermark on Inside Pages (black on white)	\$1200	\$100
8. First Title Page (B&W)	\$ 600	\$100
9. Full Inside Page (B&W)	\$ 400	\$100
10. 1/2 Page (B&W)	\$ 225	\$ 50
11. 1/3 Page (B&W)	\$ 160	\$ 35
12. 1/4 Page (B&W)	\$ 125	\$ 25
13. 1/8 Page (BA&W)	\$ 75	\$ 25
14. Business Card	\$ 50	\$ 0*

\* Some Business Cards may be charged a Set up Fee of \$25.

## MEMBERSHIP

Interested in joining the Association? A membership form is included in this newsletter. This is your Association! Please support it with your membership dues, GREENFORCE fees and voluntary contributions to the legal fund.

### !!MEMBERSHIP CONTEST!! Win \$ 55!!

YOU CAN WIN A COMPLIMENTARY PAID MEMBERSHIP IN THE HOMEOWNERS' ASSOCIATION AND A REFUND OF YOUR GREENFORCE FEES JUST FOR ATTENDING THE ASSOCIATIONS'S GENERAL MEMBERSHIP MEETING AND BRINGING YOUR EDEN ISLANDER WITH YOU.

Your EDEN ISLANDER is numbered (see the back cover). We will randomly select a valid number just prior to the Association's general membership meeting on November 27.

If you are present at the meeting, have the winning copy of the EDEN ISLANDER in your possession AND have PAID your MEMBERSHIP dues and GREENFORCE fees - YOU WIN! The Association will refund you \$55 for the fees and dues that you paid this year.

### ???WHO WON THE TRIP TO THE TREASURE BAY CASINO???

At the General Membership meeting held on September 25th a two day trip to the Treasure Bay Casino on the Gulf Coast was given away. The lucky winners were Ron and Lillian Williams of Charles Court. Congratulations!

## EIHOA MEMBERSHIP FORM

Name: (Please Print) \_\_\_\_\_

Street: \_\_\_\_\_

City: \_\_\_\_\_ State: \_\_\_\_\_ Zip: \_\_\_\_\_

Phone: \_\_\_\_\_ E-mail \_\_\_\_\_

Signature: \_\_\_\_\_

Dues: \$ \_\_\_\_\_ (\$20 per household)  
 Greenforce \$ \_\_\_\_\_ (\$35 per household)  
 Legal \$ \_\_\_\_\_ (dedicated to protecting property values)  
 Total: \$ \_\_\_\_\_

### THANKS FOR YOU SUPPORT!!

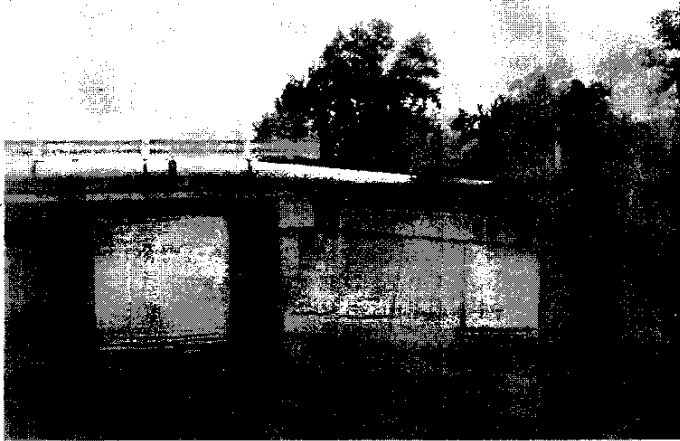
Mail To:  
 EIHOA  
 P.O. Box 2746  
 Slidell, LA 70459

-or-  
 Drop into the  
 EIHOA Mailboxes  
 at the entrances to Eden Isles

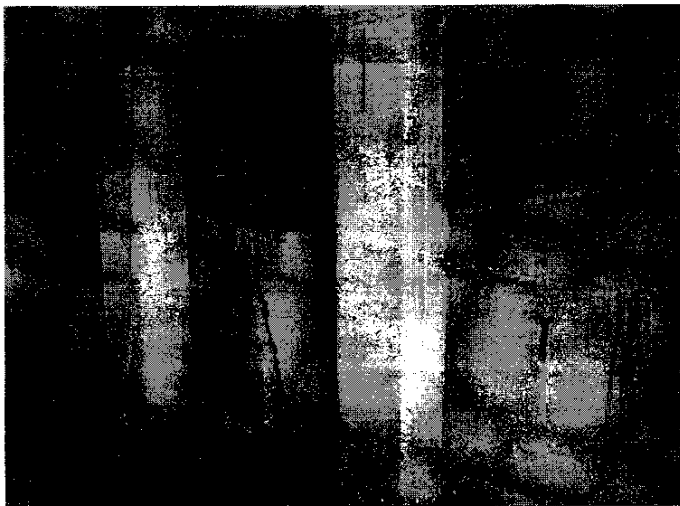
## MOONRAKER-ENTERPRISE BRIDGE

The Parish has taken action to protect the Moonraker bridge by channeling traffic to the center of the bridge. This temporary action is needed until the repairs can be made to the sub-base of both approach ramps. The sub-base supporting the approaches to the bridge has eroded creating a hazardous condition especially along the edge of the roadway. The outside retaining walls have cracked and buckled and are in the process of collapsing. Under the bridge, the upper retaining walls are missing, and the lower retaining walls are cracked and are also in the process of collapsing. The erosion under the bridge approaches is so bad that caverns five feet high, ten feet wide, and fifteen feet long have formed.

Your Homeowner's Board of Directors has been actively involved in trying to expedite the bridge repair since last November. We sent letters and photographs to our parish and state representatives alerting them to this hazardous situation. Our efforts are finally paying off. The parish has received bids to make the repairs and will begin as soon as Coast Waterworks relocates their water line. Until repairs are made we recommend residents use caution when driving pass the barricades.



**Outside retaining walls in the process of collapsing**



**Under the bridge, retaining walls in the process of collapsing**

## !!!TURKEY SAFETY!!!

Industry standards are developed by the U.S. Department of Agriculture and the National Turkey Federation (YES! THERE REALLY IS SUCH A FEDERATION) call for whole birds to be cooked to an internal high temperature of 180 to 185 degrees. Breast temperature, according to these standards, should be 170 degrees.

However, kitchen tests performed by the editors of COOK'S ILLUSTRATED magazine showed that no meat is at its best at a temperature of 180 or 185 degrees. And breast meat really tastes better closer to 160 or 165 degrees.

The two main bacterial problems in turkey are salmonella and campylobacter jejuni. These bacteria are killed in meat that reached a temperature of 160 degrees. An extra 5 degrees should take care of bacteria in the stuffing.

According to the editors of COOK'S ILLUSTRATED magazine, you should use an ACCURATE thermometer to check your bird's temp in several places. Dark meat is undercooked at 160 degrees and tastes better at 170 or 175 degrees.

Cooking the turkey "breast-up" while tenting the bird's breast and upper legs with foil will allow the turkey to cook to different temperatures in different spots. The foil deflects some of the oven's heat, reducing the ultimate temperature differential between white and dark meat from 10 to 6 degrees.

Roast your bird at a consistent 325 degree temperature and remove the foil during the last 45 minutes of roasting to achieve lovely browning.

These techniques will guarantee a tasty and safely cooked bird. Happy Holidays!

## I-10 TWIN SPAN

A rehabilitation project is planned for the Twin Span which will consist of replacing both the east and west bound bridge spans on the north end of the bridge (the Eden Isles end of the bridge). In addition, a west bound bridge span located near the middle of the bridge shall also be replaced.

The first phase of construction shall be to construct detour lanes on the north end of the bridge between the twin spans. For the next few months the contractor will be driving piles and building the detour lanes, and traffic should not be impacted. After the Super Bowl, the center detour will be used to keep traffic flowing while the bridge approaches are repaired. The detours will slow traffic down to 45 mph, but traffic flow will be maintained. After the north end approaches are replaced traffic will be completely stopped while old span located in the middle of the west bound side is removed and a new prefabricated span is put in place. It is hoped that replacing the west bound span can be accomplished in a few hours.

## FIRE HYDRANT UPDATE

The Association and the general superintendent from Coast Waterworks met on November 15 to discuss the installation of the Association's new fire hydrants.

Coast Water Works has been resistant to installing the hydrants but apparently is warming up to the idea.

Coast asked the Association to look into finding parts that would help complete the installation. Coast will test the depth of the water mains at the proposed installation sites.

It should be noted that the water in the certain sections of the neighborhood will have to be cut off to accommodate the installations. Also, Coast will probably issue a "boil water" order after water service is resumed. The Association and Coast will give residents plenty of warning prior to the water being cut off so that residents can plan accordingly.

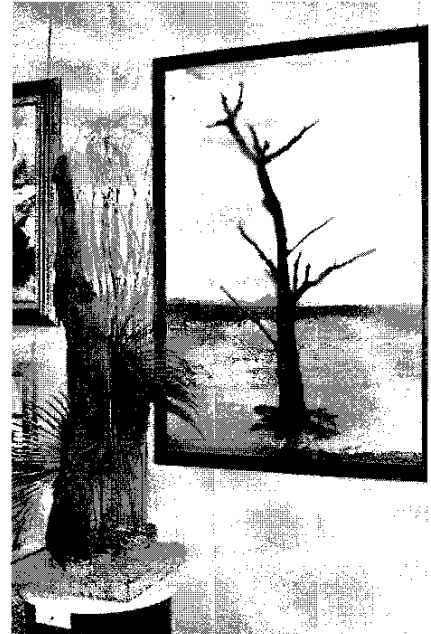
## Garden Club Slidell Arts Evening Arrangements



Arrangement by Mary Faught



Arrangement by Linda Cunningham  
and Norma Hastings



Arrangement by Yvon Molinary  
Painting by Boni Johnson

### **“My American Flag”**

The American flag is close to my Heart  
That beautiful flag and I will never part  
I love the colors and the stars set in blue  
I want my flag to always be in plain view  
As I watch our flag waving high on a pole  
It stands out with glory, in the heat and in the cold  
As it flies in freedom in this great land of ours  
It has more beauty than a bouquet of flowers  
Please fly our flag with honor and with pride  
Because the red, White and Blue  
will always be at your side

*Henry J. Sardenga  
193 Moonraker Drive  
Slidell, LA 70458*

*U.S. Veteran  
Chief U.S. Naval Air  
World War II, Korean Wars*



**Santa is Coming to visit Eden Isles  
On  
Sunday, December 16<sup>th</sup>  
From 1 PM to 3 PM  
At  
Marina Café**



**THE LANDING  
BAR & GRILL**

Mary Theisen (owner) 504-645-9009  
4750 Pontchartrain Dr.  
Highway, 11 North Shore  
Slidell, LA 70458

Mandeville/Covington  
(504) 898-1440

Slidell  
(504) 646-0602

30 Years Experience



**AIR CONDITIONING • HEATING INC.**  
RESIDENTIAL AND COMMERCIAL SALES AND SERVICE

Roy Bellinger

Service All Makes & Models

**Mon.- Fri. 7:00 - 6:00**

**Saturday 7:00 - 5:00**



**SUNDAY 8-2 PM**



**EDEN ISLES HARDWARE CAR WASH**

**and MARINE SUPPLY**

**Electrical + Paint + Marine + Plumbing**



**Tools + Propane + Screen Repairs + Locks Keyed + Galvanized & Stainless Fasteners**

**Boat Trailer + Fiberglass Supplies + Fishing Supplies**

**4500 Pontchartrain Drive**

**Phone 504 641-9502**

**Slidell, LA. 70458**

**HELP IS JUST AROUND THE CORNER**

**Bayou Connections**

**Outdoor & Indoor Climate Controlled Storage**

3663 Pontchartrain Drive

Slidell, La. 70458

643-6660

*Storage near Eden Isles- 5x5 to 10x15 size units  
call for rates*

**Outdoor storage for Rvs, Boats, Trailers, Vehicles**  
**Well lighted, fenced**

*Special rate: 3 months storage for cost of 2 months - Indoor only*

# THE EDEN ISLANDER

A bimonthly publication of the  
**Eden Isles Homeowners' Association**  
 P.O. Box 2746, Slidell, LA 70459

**Dale Wood**  
*President*

Circulation: 1100

*Distributed at no charge to residents  
 Eden Isles*

*Advertising information please call  
 Louis Pendarvis at 847-0296*

Deadline for January/February issue  
 January 15, 2001

## ADVERTISING RATES

(Camera Ready)

Our advertising rates are as follows:

Ad size	Price (single issue)	Price per year-6 issues
1/8 page	\$35	\$175
1/4 page	\$60	\$300
1/2 page	\$110	\$550
2/3 page	\$130	\$650
Full page	\$190	\$950

## BOARD OF DIRECTORS

**PRESIDENT:** Dale Wood  
**VICE PRESIDENT:** Bobby Juge  
**SECRETARY:** Ann Courrage  
**TREASURER:** Lee Laurent  
**V.PRES.PROGRAMS:** Thomas Thompson  
**DIRECTOR SECURITY:** Ralph Grimaldi  
**DIRECTOR GREENFORCE:** Ray Miller  
**DIRECTOR:** Ashley Minster  
**DIRECTOR FUND RAISING:** Ralph Kastner

EDEN ISLES HOMEOWNERS' ASSOCIATION  
 Resident & Property Owners

For Windshield Decals or Bumper plates contact:

Louis or Lynn Pendarvis at 847-0296

There is an \$8.00 charge for bumper plates

**HOTLINE 781-0091**

# JACK'S DISCOUNT BEVERAGES #12 LOTTO

*Special*  
**\$4.99**  
 1.5 Litre

Chardonnay  
 or Merlot



DOMESTIC & IMPORTED BEERS ~ FROM AROUND THE WORLD  
 LARGE SELECTIONS OF SPECIALITY WINES ~ LIQUORS ~ BEERS  
 PREMIUM IMPORTED CIGARS ~ CIGARETTES ~ TOBACCO  
 SOFT DRINKS & SNACKS ~ ICE ~ KEG BEER ~ LOTTO

**Large Orders & Special Orders: NO PROBLEM!**

FOR THE VERY BEST DEAL, SEE *SHAKEEL !!!*  
 4438 PONTCHARTRAIN DR  
 SLIDELL, LA ~ 643-4143

**SMIRNOFF**  
 FLAVORED  
 VODKAS

**NEW**

*Special*  
**\$12.99**  
 7.50 ml



**CITRUS-ORANGE-RASPBERRY**

# Eden Isles Expert

buying...

selling...

relocating...

**Just Call Beth!!!**

**646-2111**

and save...

**ABEK**  
real estate

# Beth Kobeszko

means five star service :

EXCELLENCE

EDUCATION

DEDICATION

EXPERIENCE

PERFORMANCE

just call Beth...

**646-2111**

visit ...

**EdenIsles.com**

or ...

**SlidellHomes.com**

If your home is currently listed, please disregard this offer, as it is not Beth's intent to solicit other agents' listings.



Homeowners' Association, Inc.  
P. O. Box 2746  
Slidell, LA 70459

PRSR STD  
U.S. POSTAGE

**PAID**  
PERMIT #63  
SLIDELL, LA

1002

