

A Message From *Our President...* **ELIZABETH S. HOFFMANN**

Hello friends & neighbors. "Dodged the Bullet", "We got Lucky", Hallelujah, Yippee, Fantastic. What comes to you? What comes to me as I write this is "thankful". Oh sure thankful for the obvious, but I'm reminded how thankful I am for wonderful friends and neighbors. Capt. George who kept me apprised to what was going on in our subdivision while I was "hunkered down" in Lacombe. I'm thankful that he literally "caught" a runaway boat for a neighbor, tied it up for safe keeping until the winds had died down then secured it to its proper mooring. Thank you to Mike who came with heavy equipment & picked up our downed sign at Hwy. 11. Thank you too for Debbie & Dave who dropped everything to see if they could lift it and fix the water leak. Thankful for Coast water-

works who stopped our "waterfall". Coast put Eden Isles high on their priority list while others in the parish were also needing immediate attention. Thankful for the wonderful residents who immediately went about cleaning up their properties to ensure Eden Isles looks pristine. The parish will be picking up this storm debris if placed curbside. (Hopefully this will be done before you get this newsletter)

Please check our web-site for updates. Our wonderful web master, Bill, will be implementing a storm update to include your suggestions, your storm stories, where you evacuated, suggested hotel or camp sites available for evacuation, list any of our senior residents or handicapped that need help in preparing to evacuate or even need help cleaning up. I'd also like to see a "Lost & Found" section. Maybe you lost a deck box or something floated into your yard, this is a great forum for such things. I know that there are lots of old/antique car enthusiasts and motorcycle riders that could post car shows, and motorcycle events; what a great way to have Eden Isles show up for support.

UPDATES: I am pleased to say that our By-Law amendments have passed by a majority vote.

The Hwy 11 sign was damaged in the storm. Natal construction has placed another brace and will be repairing it. When it fell it also damaged the water supply. Our insurance policy doesn't cover this so this will need to be repaired as well.

GOOD NEWS: The Moonraker bridge has been repaired. There are still a few fire hydrants that are waiting to be repaired or replaced, and many of our clogged drains have been cleaned out and are draining as they should. If any were missed please report this and we'll see about getting them taken care of.

NOW, THE HARD PART. This will be my last year as President. I will not seek re-election. During my tenure I wanted to make so many positive changes. I wanted to see new street signs, more landscaping, fun activities like cook-offs, fishing rodeos, new directory, etc. I'm sorry to say not enough support, money or participation to see these things through. On the upside, I've been told by Mr. Artigue that the bike/walking path for Eden Isles Blvd. is in the 2009 budget and should become a reality. My "platform" as President was like that of Nike, "just do it", but alas, I can't do it without the support of the residents and board working in unity. It has been a pleasure serving this beautiful community and the many wonderful folks who give it their ALL. I will continue to be available in an advisory capacity, if needed. In closing I say from ABBA's Mamma Mia "Thank you for the Music" ... "for what would life be without a song or a dance, what are we?" See you at the general membership meeting.

Liz Hoffmann, President (September 2008)

GENERAL MEETING

OCTOBER 21, 2008

NORTHSHORE HARBOR CENTER

7:00 PM

MEET AND GREET

6:00 PM - 7:00 PM

SPEAKERS

MELISSA DEPHILLIPS

ST. TAMMANY PARISH

COMMUNICATIONS DISTRICT

COORDINATOR ON

"9-1-1"

ELECTION OF NOMINATING

COMMITTEE

SUPPORT YOUR ASSOCIATION - JOIN TODAY

ATTENTION ALL RESIDENTS!!!

(This article is written by John Faust and is a serious issue for ALL NORTHSORE Residents)

My name is John Faust and I reside at 122 Moonraker Dr. I have been living in Eden Isles for more than 21 years. My reason for writing this letter is to inform my fellow Eden Isles residents of a new flood risk that we are facing. We live here with the knowledge that flooding from a hurricane is a real possibility. We minimize that risk by building to proper height standards recommended by flood grades. What has increased our risk in the past years is land development in the flood plain, loss of coastline, and changes in the original flood protection program, along with new ones that are being proposed. On September 12th of this year Col. A. Lee, the Commander of the Corps of Engineers, announced on WWL radio that a project has been awarded to build flood structures on the ICW where it meets with the inter-navigational canal. Another structure will be built where the ICW meets Seabrook. Once these structures are built, ALL storm waters will enter Lake Pontchartrain and be forced to leave through the Rigolets and Chef Pass waterways. That volume of water previously entering and exiting through the ICW will now be forced north and east when the out flow of that water begins. You do not need to have a degree in hydrology to understand that the increased volume will cause more flooding to the east and for a longer period of time.

This flooding does not just affect our community, it affects 8 other communities that border Lake Pontchartrain as well. All the communities together have about 40,000 residents. If you include those other areas adjacent to the costal communities that have a potential for flooding in large storms, this number jumps to over 100,000 residents. Combine these numbers with property values, which are in the billions, and this becomes a worthwhile project. As you can see we are not in this boat alone.

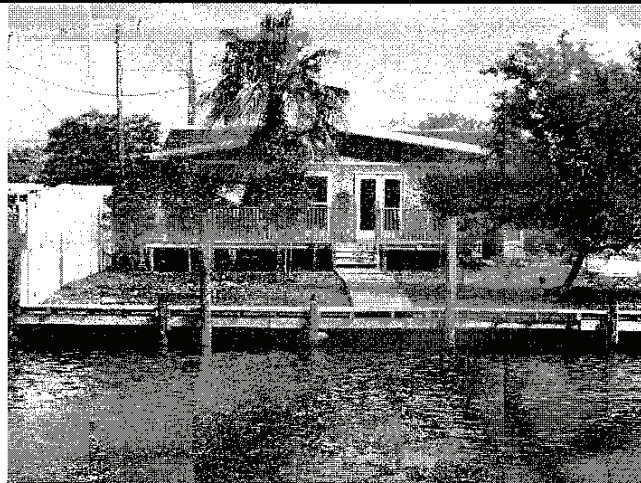
So, what can be done? The construction of flood gates at the Rigolets, Chef Pass and the ICW will stop storm water from entering the lake. During an interview discussing flood protection, which was conducted in September of 2005, Professor G. Stone and Professor James Morgan, the Directors of Costal studies at LSU confirmed that these closures will stop the lake from receiving flood waters thus controlling flooding through the lake. These closures were proposed in the 1965 Flood Control Act. The project was stopped when the environmentalist group, SOWL, and St. Tammany Parish filed a suit in Federal court claiming that the gates would affect the lake's environment. St. Tammany joined the lawsuit because they were trying to develop a ship building industry, which never evolved. At that point the Corps of Engineers decided to abandon the floodgates and go with levees around the lake. Recently there has been a renewed interest by the Corps of Engineers to build these floodgates. We have a small window of opportunity to promote this effort in our behalf. We must propose that these gates be built concurrently with the structures being built in the ICW. Our strength is in numbers, and the communities affected must organize.

The following is a list of issues that are standing in the way of getting the locks built:

1. First, we do not have the support of local, state and federal politicians. However, as a unified front they will have to listen to us.
2. Second problem is the lawsuit. I am not an attorney, but after reading the suit, I believe it has no merit and in light of recent events (Katrina, Rita, Gustav, and Ike). I don't think in today's time it would even be heard in court.
3. Third, is getting a tax base to fund the construction. I recently read an article involving the funding for this project. It was quite clear that we will have to bear part of the funding if we want to ever see this project completed. If you are wondering what the price tag is for these projects, it is estimated to be about 2.6 billion dollars. This is but a small price to pay when you consider the loss of life and property should this project not be done. I, like most of you, plan to live the rest of my life here. If there are anymore big floods, this could cause our life style here in Eden Isles to disappear forever. Talk to your neighbors about this serious issue and spread the word .



4808 Pontchartrain Drive
 Slidell, LA 70458
 (985) 201-8096
 www.tooloulas.com



Come see us by car or by boat!

- ❖ Smoke Free Lounge
- ❖ Outside Deck Overlooking Water
- ❖ Friendly, "At Your Table" Service
- ❖ Boat Dock Available
- ❖ Horseshoe Tournaments On Sundays
- ❖ Come Karaoke With Caren On Thursdays at 7PM!

~LIVE BANDS EVERY FRIDAY AND SATURDAY NIGHT STARTING AT 9PM!~

Buy One Regularly Priced Drink, Get One FREE!



Coupon Valid On Sunday, Wednesday, and Thursday Only

SLIDELL EASY PAY TIRE STORE

NOW OPEN Saturdays • 7:30am - 2:00pm

CHECK US OUT FOR ALL YOUR VEHICLE NEEDS

3165 Pontchartrain Dr. • Slidell, LA 70458

985-643-7766

M-F 7:30-6pm • Sat. 7:30-2pm

Closed Sunday

www.septs65.com



Gas Saving Tips

1. Keep engine properly tuned Fuel Economy Benefit 4-40%
2. Check and replace air filter Fuel Economy Benefit up to 10%
3. Keep tires properly inflated Fuel Economy Benefit up to 3%
4. Use reg grade of Motor Oil Fuel Economy Benefit 1-2%



WE REPAIR BOAT TRAILERS

Presidents Letter Concerning Neighborhood Fire Hydrants

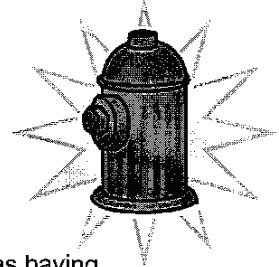
Good morning Greg,

I'm trying to check on the status of the non working fire hydrants located in Eden Isles. Several weeks ago when we had the HOA meeting in council chambers I spoke with you briefly regarding this issue. I also e-mailed you the photos (which you confirmed receipt).

Have you spoken w/Coast Waterworks about this? When will they be addressing these very important issues?

Thank you.

Liz Hoffmann, President, EIHOA



Mr Timothy Browns Response :

Ms. Hoffmann, Coast did provide me with a list of fire hydrants that they had identified as having problems. The problems identified range from broken equipment to too much vegetation around the hydrants. The list indicates that a total of 29 hydrants had a problem. Of these 29, Coast reports that 20 have been repaired or corrected. I spoke with Mr. Sinden with Coast and he indicated that the remaining 9 hydrants are in the process of being repaired. I will stay in touch with Coast about this issue and intend to perform inspections to verify that this work is completed. Let me know if you have any questions.

Timothy G. Brown
Department of Environmental Services
St. Tammany Parish Government

Crime Statistics for Eden Isles:

Crime statistics are posted on Wednesday of each week. Statistics for any city limit boundary do not reflect reports made to local city police departments.

Incident Type:	Last 7 days:	Last 6 Weeks:	This Year (to date)	Last Year:
Assault	-	1	8	13
Bomb	-	-	-	-
Burglary	-	1	8	19
Burglary - Vehicle	-	1	7	15
Car Jacking	-	-	-	-
Criminal Mischief	-	1	9	3
Death - Investigation	-	-	3	6
Domestic	-	-	4	22
Drug Violations	-	-	4	10
Fire	-	-	-	-
Juvenile	-	-	1	-
Kidnapping	-	-	-	-
Missing Persons	-	-	2	-
Rape	-	-	-	1
Recovered Property	-	-	-	1
Recovered Stolen Vehicles	-	-	-	1
Robbery	-	-	-	-
Sex Crimes	-	-	-	-
Theft	-	1	15	40
Theft - Vehicle	-	1	5	11
Attempted Theft - Vehicle	-	-	-	-



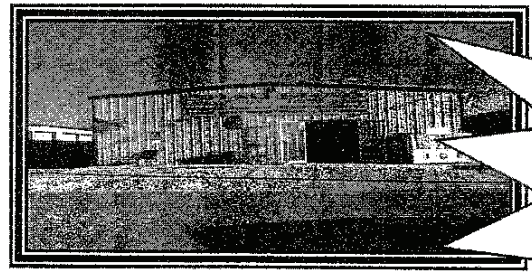
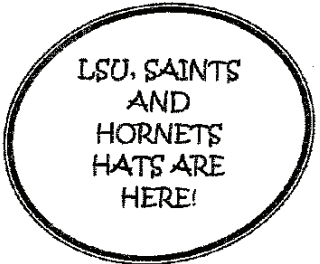
SHAQ DISCOUNT

LIQUOR·TOBACCO·BEER·SOFTDRINKS·ICE



· NOW LEASING STORAGE
UNITS AT GREAT
MONTHLY RATES!
5X10 OR 10X10

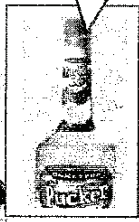
· HUNTING AND FISHING
LICENSE, BAIT, TACKLE,
RODS AND REELS



4436 PONTCHARTAIN DRIVE
SLIDELL, LA 70458
(985) 649-9898

NEW
ARRIVALS
OF FLEUR
DE LIS
JEWELRY,
PURSES,
HATS AND
MORE!

**YOUR ONE STOP SHOP!!!!
CAN'T FIND WHAT YOU'RE
LOOKING FOR, JUST ASK, WE
CAN GET IT!**



Low Cost • No Contract
Licensed • Bonded • Insured

(985) 643-7437
Toll Free 1-866-647-3787

Pro's Pest Control Service Inc.

Environmental Specialists • Servicing a 4 Parish Area
Full service available, including reasonable termite control rates
"For A Change Get Your Money's Worth"

Roy Provenzano, Jr.
Owner

147 Eden Isles Drive
Slidell, LA 70548



2409 Paris Road • New Orleans, LA 70129

RITCHIE COLLIGNON
(504) 277-7777

INLAND MARINE CONSTRUCTION



Boat Houses
Boat Hoists

Pile Driving
Bulkheads
Docks

Rick Alphonse

985-960-6728
Fax : 985-288-0829

323 Oleander Dr.
Slidell, LA 70458

BUDGET BLINDS

Draperies ~ Blinds ~ Shutters

FREE In-Home Consultation ~ 12 mo. Interest free financing

726-9756

4015 Pontchartrain Dr.
Jimmy & Kelly Corkern ~ Owners

CANTON MISSISSIPPI CRAFT FAIR

Come join us at the Canton, Mississippi Craft Fair on Thursday October 9, 2008
For those interested, there will be a bus departing Eden Isles at 2:30 AM and returning at
approximately 7:30 PM.

For more information, contact Paula Puglise at (985) 649-3327.

TREASURER'S REPORT CASH FLOW REPORT AS OF 9/28/2008

INFLOWS :

Uncategorized	\$ 0.00
Advertising	3,495.00
Beautification - Coastal Waste	8,823.00
Homeowner Dues 2007	20.00
Homeowner Dues 2008	28,235.00
Homeowner Dues 2009	120.00
Other Inc	<u>154.00</u>

TOTAL INFLOWS

\$40,847.00

OUTFLOWS:

Common Grounds Maintenance	\$22,843.50
Insurance	372.75
Meeting Expense	792.41
Miscellaneous	40.00
Newsletter	1,418.42
Supplies	369.19
Utilities	261.34
Website	<u>319.55</u>

TOTAL OUTFLOWS

\$26,417.16

OVERALL TOTAL (net gain)

\$14,429.84

ASSET REPORT AS OF 9/28/2008

EIHOA Checking Account	\$34,622.79
EIHOA Money Market Account	<u>\$15,385.78</u>

TOTAL ASSETS

\$50,008.57

St. Tammany Parish

August 2008

Building Excellence Every Single Day

Keeping St. Tammany's Trees Healthy

St. Tammany Parish is known for our forests and our natural, rural beauty. Of course, since Hurricane Katrina we are seeing some loss to the overall number of our trees on the Northshore. It seems as if every storm is causing more trees to break or fall. This is causing an increased concern in the health of existing trees, especially those in our yards and near our houses. Homeowners are questioning how to assess the health of the trees on their property.

One thing to keep in mind is that the majority of the trees on the Northshore are healthy. Many times, trees demonstrate patterns or growth characteristics which we think may be some form of disease. For example, leaf spots most of the time do not represent a diseased tree. Also, many trees in St. Tammany Parish actually produce yellow leaves at first, which later turn green. Many citizens see the new yellow growth and believe it to be a sign of disease.

Perhaps one of the most prolific types of tree in St. Tammany is the pine tree. An interesting fact about the growth patterns of pine trees in our area is the natural dropping of branches. As pine trees grow taller, they naturally drop branches, often several in a short period of time. Couple this with a healthy thunderstorm with which we are accustomed to having, and it becomes easy to think the pine tree in the yard is dying. In fact, most of the time the wind merely facilitated the dropping of the branches as part of the growth process.

Two things which we as homeowners can do to help with the health of the trees in our yards and on our property are actually quite simple. Every few years, it is good to fertilize the trees we might have in our yard. Just as with flowers or lawns, fertilizing a tree can help strengthen it. Also, preventing fill from being put around or on top of the root system of an existing tree can be of great benefit to keeping the tree healthy. Fill packed on top of roots can compact the roots and actually damage them.

One of the best resources we have in St. Tammany Parish is our branch of the LSU Agricultural Center, located in Covington. We have two county agents who make house visits and can make recommendations. If a tree does appear to be diseased and a determination needs to be made, the LSU Ag Center can do it. The Ag Center handles questions regarding trees, flowers, gardens, lawns, vegetables and fruit trees. The agents will make a home visit free of charge, but an appointment must be made first by calling (985) 875-2635. Also, the Ag Center website is www.lsuagcenter.com, and follow the link to the St. Tammany Parish office. The LSU Agricultural Center is a little known resource in St. Tammany, but an absolute wealth of information.

Much of what we love about life in St. Tammany Parish rests in the natural beauty of our trees and other foliage. Keeping our trees healthy and safe is beneficial to everyone on the Northshore.

Thank you to all the Homeowners' Association board members who came to the Parish Administrative Complex on July 12th for a meeting.

I appreciate you giving your time and effort to making St. Tammany an even better place to live.

Kevin



Kevin Davis
Parish
President

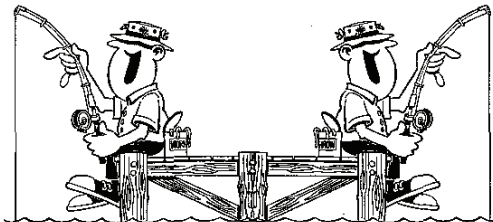
BIDS OPENING FOR EDEN ISLES GREENSPACE MAINTENANCE **For Calendar Year 2009**

The Eden Isles Greenspace Maintenance Chairman, Cathy Drolla, will be taking bids from insured Grass Cutter Contractors to cover 2009 requirements. All bids must be submitted to Cathy by November 15, 2008. She can be reached at 985-290-1313 for additional information.

Below are the criteria for the bidding process:

- All common areas on each street in Eden Isles(22 common areas, entrances, bridges, street signs and Blvd.)
- Eden Isles entrances
- Eden Isles Blvd.
- Three bridges on both sides
- Street Signs on private property
- Cut Grass, Weed Eat around signs, curbing and trees.
- Pick up trash on common areas, blow streets after cutting
- Maintain front entrance for weeds and maintain flower beds and keep bushes trimmed
- Cut weeds in cement curbs as well as kill weeds in cement curbing.
- Maintain and cut lower limbs on trees in common area.
- All above needs to be included in bid for 20 cuts per year.
- Must licensed and insured and show proof of documents

HOME BUILDING, ADDITIONS AND DOCK/PIER BUILDING



Eden Isles Unit III (Eden Isles Blvd) Liz Hoffman (985) 643-9429

Eden Isles Unit IV (all streets reached Via Windward Passage)
Dale Wood nol_cpa@yahoo.com

Moonraker Phases 1&2 (up to 216 Moonraker DR)
Arbie Herring (985) 847-0905

Moonraker Phase 3 (217 Moonraker to end)
Randy Brown (985) 639 8894

Oak Harbor Hardware & Marine

Monday - Friday
7:00 - 6:00
Sat 8-5 • Sun 9-2

We are South Slidell's Hardware & Marine
Supply Headquarters!

- Full Hardware Store
- Power & Manual Tools
- Plumbing & Electrical Supplies
- Sheetrock & Painting Supplies
- Landscaping & Maintenance
- Ice, Propane & MUCH MORE!
- Rods & Reels
- Saltwater & Freshwater Tackle
- Fishing Dock Lights
- Large Selection Marine Equipment
- Crawfish Boiling Supplies
- Marine Safety & Regulations Gear

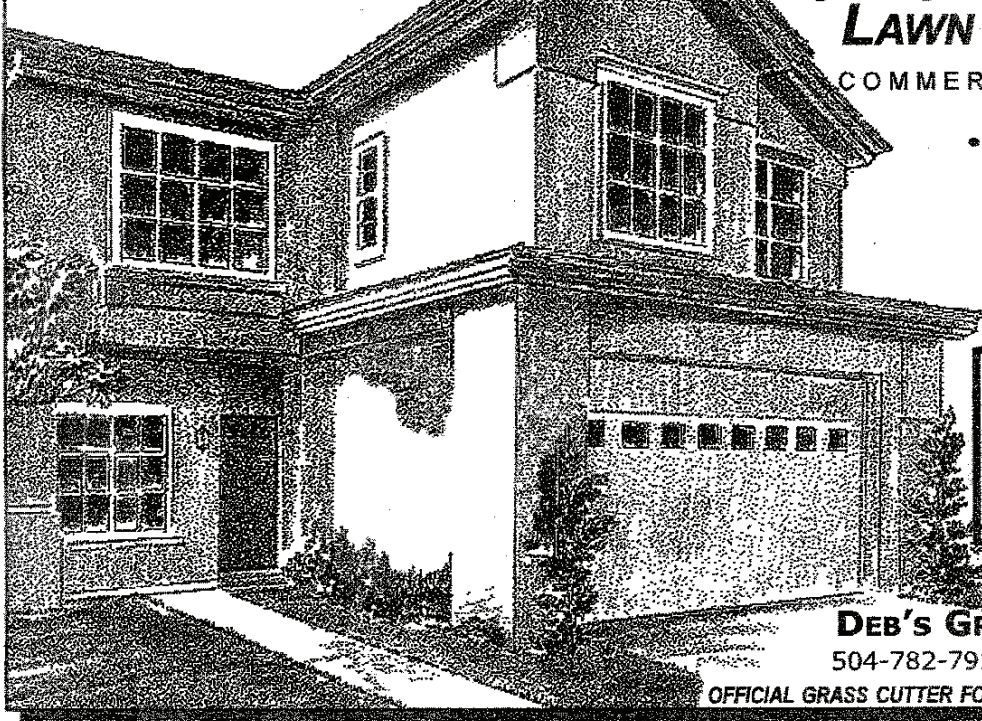
We now carry Boat Hoist USA Products

4500 Pontchartrain Dr. Slidell, LA 70458
(985) 641-9502 • Fax (985) 641-7152



Paws Aboard Dog life jackets
& other Pet Accessories
in STOCK

Get... *Curb Appeal*



LAWN MAINTENANCE
COMMERCIAL-RESIDENTIAL

- Residential
- Business
- Subdivisions
- Vacant Land

\$5.⁰⁰
DISCOUNT
for members of the
Eden Isles
Homeowners Assoc.
on lawn service

DEB'S GRASS CUTTING
504-782-7917 • 985-639-4663

OFFICIAL GRASS CUTTER FOR EDEN ISLES COMMON GROUNDS

**PRESIDENT'S LETTER TO COASTAL WASTE
(Post Gustav)**

September 6, 2008

Mr. Mark Fridge
Coastal Waste Services
310 Howze Beach Lane
Slidell, LA 70461

Dear Mr. Fridge:

Please allow this letter to serve as a follow up to our conversation earlier today.

I am writing this letter after further thought of this conversation. You informed me that Coastal Waste would "resume" our community pickup on Tuesday, September 9, 2008 due to a shortage of the necessary staff required for adequate service.

Mark, it is very distressing to me that you were on the radio on Friday, September 5, 2008 informing the general public that Coastal Waste was "on schedule" and because of your "dedicated employees" were able to boast that services were NOT going to be interrupted only to have you tell me today (without an audience) that Eden Isles was not included in "this on schedule" because we were not a "municipality".

As I write this letter it is 10:48 pm on Saturday night. SDT services has 2 trucks outside my house as they await further instructions after delivering service to Clipper. Furthermore, you should know that Waste Management (the green can) picked up today as scheduled.

I know that many areas were hard hit by this storm, I know that there's probably lots more money to be made elsewhere, I also know that Coastal has previously given good service; HOWEVER, service not performed as expected and contracted is problematic.

In light of these facts, I am respectfully requesting that every Eden Isles Coastal customer be granted a CREDIT for this missed service in their next billing cycle.

Thank you for your continued good service and support,

Respectfully submitted,

Liz Samuel Hoffmann, President
Eden Isles Homeowners Association.

Eden Isles Homeowners Association

Proposed 2009 Budget

	2007	2008	2009 PROPOSED
<u>Maintenance and Repairs</u>			
Grounds Maintenance	\$16,000.00	\$30,450.00	\$33,600.00
Repairs (Signs and landscaping)	\$10,000.00	\$10,000.00	\$10,000.00
<u>Advertising and Information</u>			
Meetings (Signs, facility rental, security)	\$2,000.00	\$2,500.00	\$2,000.00
Newsletter (Printing, folding, distribution - after advertisement income)	\$5,000.00	\$500.00	\$500.00
Website	\$1,000.00	\$500.00	\$500.00
<u>Insurance</u>	\$6,400.00	\$4,000.00	\$3,100.00
<u>Equipment and Supplies</u>	\$800.00	\$800.00	\$800.00
<u>Utilities</u>	\$500.00	\$700.00	\$500.00
<u>Miscellaneous (P.O. Box, State Fee, Etc.)</u>	\$100.00	\$100.00	\$100.00
TOTAL BUDGET	\$41,800.00	\$49,550.00	\$51,100.00

Projected Income

	2007	2008	2009 PROJECTED
<u>Membership Dues – (275 members @ \$120.00)</u>	N/A	\$30,000.00	\$33,000.00
<u>Coastal Waste - Beautification</u>	N/A	\$16,000.00	\$10,000.00
<u>Funds from Assets from 2008</u>	N/A	\$3,550.00	\$8,100.00
TOTAL INCOME	N/A	\$49,550.00	\$51,100.00

	2006 ACTUAL	2007 ACTUAL	1/1/2008 – 10/21/2008 ACTUAL
INFLOWS			
Advertising	\$350.00	\$2,525.00	\$3,495.00
Beautification - Coastal Waste	\$0.00	\$9,333.00	\$8,823.00
Homeowner Dues	\$27,424.00	\$26,810.00	\$28,505.00
Homeowner Dues 2006 – Katrina Assessment	\$6,700.00	\$0.00	\$0.00
Interest Inc	\$106.85	\$82.48	\$19.10
Other Inc	\$156.60	\$233.00	\$154.00
TOTAL INFLOWS	\$34,737.45	\$38,983.48	\$40,996.10
OUTFLOWS			
Common Grounds Maintenance			
Grass Cutting, Garden Maintenance	\$8,500.00	\$20,350.00	\$22,900.00
Other	\$2,620.09	\$2,247.70	\$0.00
Signs	\$800.00	\$14,319.72	\$43.50
Tree Cutting	\$800.00	\$470.00	\$1,795.00
TOTAL Common Grounds Maintenance	\$12,720.09	\$37,387.42	\$24,738.50
Gifts Given	\$0.00	\$0.00	\$52.84
Insurance	\$0.00	\$6,562.50	\$372.75
Legal	\$0.00	\$998.25	\$0.00
Meeting Expense			
Audio System	\$700.00	\$172.89	\$0.00
Copies	\$185.24	\$75.46	\$0.00
Other	\$387.32	\$751.85	\$42.41
Rental	\$490.00	\$950.00	\$750.00
Signs	\$607.03	\$303.57	\$0.00
TOTAL Meeting Expense	\$2,369.59	\$2,253.77	\$792.41
Miscellaneous			
Bank Charge	\$217.46	\$14.00	\$0.00
Cash, Decals, etc.	\$845.00	\$0.00	\$0.00
Post Office Box Rental	\$40.00	\$40.00	\$40.00
TOTAL Miscellaneous	\$1,102.46	\$54.00	\$40.00
Newsletter			
Delivery	\$750.00	\$1,002.34	\$949.49
Printing	\$677.30	\$1,819.71	\$1,589.39
TOTAL Newsletter	\$1,427.30	\$2,822.05	\$2,538.88
Supplies	\$0.00	\$0.00	\$316.35
Utilities			
Gas & Electric	\$0.00	\$176.55	\$168.13
Water	\$139.69	\$457.28	\$93.21
TOTAL Utilities	\$139.69	\$633.83	\$261.34
Website	\$225.00	\$0.00	\$319.55
TOTAL OUTFLOWS	\$17,984.13	\$50,711.82	\$29,432.62
OVERALL TOTAL	\$16,753.32	-\$11,728.34	\$11,563.48



Pontchartrain Ace Hardware

3320 Pontchartrain Dr.
Slidell, LA 70458
Phone: (985) 643-4672
FAX: (985) 641-6051

Petals & Stems FLORIST

Janet & Harrison Bowman

376 Sun Valley Dr. - Slidell, LA 70458 - 985-781-4585

Eden Isles Resident for 22 Years!



Anna J's Blinds & More

Quality Custom Blinds For Less!
Locally Owned and Operated

3410 Pontchartrain Drive
Slidell, Louisiana 70458
judd@annajs.com

Ray Judd
Cell: (985) 718-7588
Office: (985) 781-1858

JANDY imports

M/C LEATHER

10% OFF WITH THIS AD

3199 Terrace Avenue
Slidell, LA 70458

(985) 641-3401
Toll Free (888) 300-2999

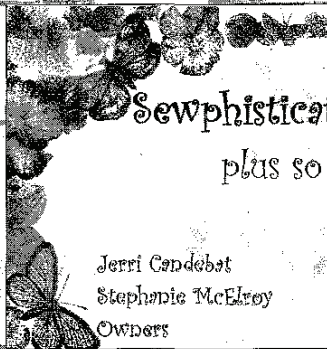
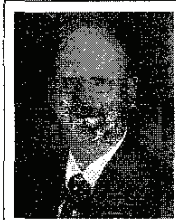
Off Old Spanish Trail - Exit 263, one mile north of I-10



Investment Realty

2160 E Gause Blvd, Suite 100
Slidell, Louisiana 70461
Business (985) 643-4200
Fax (985) 643-6167
Toll Free (800) 643-4208
Cell (985) 768-8934
E-Mail david.robertson2@century21.com
Each Office Is Independently Owned And Operated

Dave Robertson REALTOR®



Sewphisticated Embroidery plus so much more

Jerri Candebat
Stephanie McElroy
Owners

(504) 373-1624
(504) 460-8323

Mon-Fri: 10:00 - 4:00

EMAIL FROM RESIDENT:

Dear Ms Hoffmann,

I have been here going on 2 years....I don't particularly mind paying dues. I have not yet. There are major noise problems here, I'm not a freak, but many places have restrictions on traffic in their subdivisions. I'm used to a quiet neighborhood.....but no, not here.....UPS/FEDX/18 wheelers/mowing weed eater and blowers everyday/ice cream vans blaring music/ motor cycles loud as crap/ truck after truck after truck.

No guard entrance.....

your message in the paper was rather arrogant, which many here agree with.

I'll pay dues, like my friends here agree with when these problems are addressed....otherwise we just live in a plain subdivision. I walk and pick up trash in the boulevard and am up as a neighborhood watch, so I do contribute, but you need to back off your message. It's insulting to us that try here.

PRESIDENTS RESPONSE:

Dear _____:

Thank you for your e-mail and welcome to Eden Isles, post Katrina.

If I understand your concerns correctly you will not pay dues because:

1. Noise Problems trucks, motor cycles, grass cutting machines, etc.
2. No guarded entrance or restrictions on traffic.

Does (your street) suffer with excessive noise? I note your complaints about Fed-X/delivery trucks, folks cutting their grass, etc. am I to understand that this takes place after the acceptable parish ordinance time of 10PM?

I've never seen an 18-wheeler in Eden Isles (except maybe a very occasional moving van and/or construction delivery truck). Of course if we do have excessive 18-wheeler traffic we've got huge problems because I'm not sure our small bridges will hold up. As for ice cream trucks.... geeze I've never seen one although if I did I'd be happy to buy you a fudgecicle or a sherbet pushup to remind me of better times.

However, we, the PAID members of the HOA, ARE concerned about loud music, cars speeding, our green spaces left uncut and littered, our fire hydrants not operable and now possible gang activity, not to mention much, much more. We ARE doing something about it; we're paying our dues, banding together and addressing these issues. I'm proud to say we're getting them taken care of even if just one at a time.

As for your picking up "trash", kudos! By all means please keep it up. Does this mean that you will also cut the grass and maintain the entrances? Shall I let the grass cutters go? Will you pay the liability insurance policy for the subdivision, and field the complaint calls? Heck, while you're at it, maybe even buy back the public streets from the parish so we can make them private and put back our guards at the entrances? (of course we would have to pay to maintain the streets and bridges not to mention the signs and pay for private roaming security).

I am sorry that you considered my newsletter re-marks arrogant. The HOA that you don't support distributes this free publication to our residents, PAID members or NOT. You are certainly entitled to your opinion. Just as some may consider your position to withhold funding of subdivision maintenance and improvements until YOUR improvements are made is illogical. How can we make ANY improvements if we do not have the money to pay for them? How can we have strength in numbers if we don't have participation?

You and your "friends" might feel you "live in a plain subdivision", I don't! I live in one of the best thought out, most affordable, safe, beautiful, friendly, waterfront communities in the SOUTH. What's truly "insulting" is that there are folks that will find any and every excuse NOT to contribute leaving the burden on a few, whilst reaping the benefits for all.

I do hope that you might reconsider and join us as there truly is strength in numbers.

Respectfully,

Liz Samuel Hoffmann, President, EIHOA

P. S. I hope you don't mind but your e-mail and my complete response will appear in the next newsletter.

Eden Isles Homeowners Association
P.O. Box 2746
Slidell, LA 70459

2008 HOMEOWNERS' DUES
\$120.00

Name of Homeowner(s): _____

Home Address: _____

Home Phone: _____ Cell Phone: _____

E-mail Address: _____

IMPORTANT NUMBERS

In Emergency dial 911
Parish President, Kevin Davis (985)898-2362
Parish Council (985)898-2591
Engineering (985)898-2552
Environmental Services (985)898-2535

Permits &Regulatory (985)898-2574
Planning (985)898-2529
Public Works (985)898-2557
Social Services (985)898-3074
Sheriff Dept. (985)809-8200 or 911

Visit our Website at: "WWW.EIHOA.ORG"

BOARD OF DIRECTORS 2008

President	Liz Hoffmann	985-643-9429
VP of Fundraising	Jerri Candebat	985-639-1624
Treasurer	Kelly Carlos	985-646-0592
VP Programs	Jeanette Commagre	985-645-8713
Welcome/Membership	Cathy Drolla	985-290-1313
Secretary	Cindy Franatovich	985-201-7383
Senior VP	Dave Robertson	985-768-8934
Director	Anne Nash	504-669-2466
Director	Denise Montalbano	

EDEN ISLANDER Phone: 985-847-0905 E-mail david.robertson2@century21.com

**ADVERTISING
PRICES**

1/8 Page \$40.00
1/4 Page \$60.00
1/2 Page \$100.00
Back Cover \$200.00

**FULLY
INSURED**

Sauter and Sauter Ltd DBA

**FULLY
INSURED**

Distinctive Design CONSTRUCTION

MARINE PILE DRIVING * PIERS * DOCKS

BOATHOUSES * BULKHEADS * DECKS

BOAT HOISTS * BULKHEADS REPAIRED



985-781-3325

www.distinctivedesignconstruction.com

Owned and operated by Gerald Sauter

Eden Isles Resident In Business for Over 20 Years

Eden Isles Homeowner's Association
P.O.Box 2746
Slidell, LA 70459

PRSR STD
U.S. POSTAGE
PAID
CUSTOM MAILER