

THE EDEN ISLANDER

VOLUME VIII, NO. 1

JANUARY/FEBRUARY

1995

INFORMING THE COMMUNITY -- UNIFYING NEIGHBORS

Greetings everyone!

What a great fireworks display we had here on New Year's Eve! I guess everyone was eager to kick off the new year with a bang. From my back door on Blackfin you could see a beautiful show! Everyone loved it, except my dog. It seemed that all the explosions caused her to sort of go crazy. I thought

A LETTER FROM

THE PRESIDENT

I'd have to send her to a dog psychiatrist. She stayed jumpy for about a week, but she's OK now.

It is with great sadness that I must report the passing away of one of the members of the Board of Directors. Marilyn Cazaubon, who has always been an asset to Eden Isles, has passed away. Marilyn enjoyed her community work, and her articles in the Slidell Picayune and The Eden Islander always helped to keep us informed. She will be greatly missed by all of us.

On a lighter note, the new year has started and we are all looking forward to our first Eden Isles cook-out/get-together. We will try to do this sometime in April. We will ask for assistance and volunteers for a party committee at the January meeting.



Bill Northrup

The Architectural Control Committee for Unit 4 has a very pressing need for someone to take over the job of secretary. It is a paid position. Call me or any other member of the ACC for more information.

Please be sure that your automobiles all have Eden Isles license plates and/or decals, so that the guards don't have to write down your tag number every time you pass through the gate. This will let them be more effective in knowing who lives here and who doesn't. I have license plates and decals for sale at my house; the prices are \$7 for license plates and \$2 for decals.

I was very proud of our subdivision over the holidays with the nicely decorated homes, especially the new "snowman house." Congratulations! The backs of the houses were decorated also, and I enjoyed cruising through the canals by boat at night. Also, our local high school, Salmen, has won the State Championship football crown! We have a lot to be proud of in our area. See ya at the January 31 meeting!

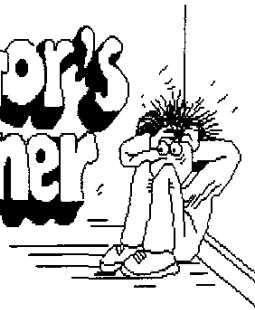


Although it had not been closed, the official grand opening of the enlarged and remodeled Delchamps took place on January 18. Beside it is Rhonda's of Slidell, a new store that will open in early February. Rhonda's will sell arts and crafts supplies and give classes in art, knitting, bow making, and flower arranging. Kay Mortillaro, the co-owner, is an Eden Isles resident.

*"Laissez Les
Bon Temps Rouler!"*



Editor's Corner



I had the last *Islander* completed and ready for printing and was already leaving the house when Boni Johnson arrived. She had an article she had written about the Halloween block party that had been held on Ondine Lane. She'd meant to submit it to *The Eden Islander*, but it was too late.

This event had two effects. The first was that it brought up a loophole in the *Islander*: people who wanted to contribute did not know when they had to do it by. From now on, I will provide the next edition's deadline in each issue. The deadline for the March-April issue is March 16.

The second effect was that Boni and I had a conversation about the importance of being active in the community. A few weeks later, when I went to the Association meeting, I was pleasantly surprised to see Boni as the Secretary. She also helped with Santa by Boat, wrote an article about it, and decided to try to form a group for retired people. In other words, she had gotten involved in our neighborhood.

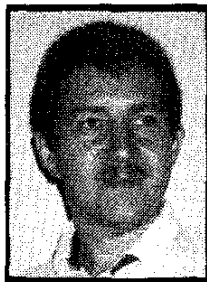
The *Islander* staff has grown considerably in the past two months. Hank Lawton is now the co-editor, and his house, instead of mine, was the *Islander's* office for this issue. Our new contributors are Suzy Sale, who has a column about the Tammany Yacht Club;

Harriet Drewes, who writes about the Krewe of the Bilge; Fran Hall, who reports on the actions of the recently formed "Community of North Shore Team 11"; Boni Johnson, the author of "At Santa's Knee" and her Halloween article; and Ronald Reyes, our contributing photographer. I hope you enjoy the new variety of articles in *The Eden Islander*.

You will probably notice that we also have several new advertisers. Their financial support is very important to *The Eden Islander* since it covers the printing and distributing expenses and allows you to receive it for free. If you use the services of any of our advertisers, please mention that you saw them in the *Islander*. I'm sure they will appreciate this.

This issue, in addition to everything already mentioned, has our older features as well. My wife Beth has gathered statistics for both of her articles, and Kasia's *Once Upon A Time* tells about the origins of our streets' names. Pam White's *Garden Club* article explains their new grading scale for judging of *Yard of the Month*. Peggy Menard tells about *GREENFORCE's* plans for 1995, and Mike Bruce gives us some early spring gardening tips.

Bits and Pieces, now by Pam White, is written in remembrance of Marilyn Cazaubon, who died of cancer last month. I hope all of you take the time to read about this great woman, who wouldn't stop helping others even when she was dying.



Andrew Kobeszko
Editor

PROGRAM

If you don't like paying tax, come to the **January 31st meeting**. You can't afford to miss it!!

The topic of our guest speaker is:

TAX - FREE and TAX - DEFERRED INVESTMENT STRATEGIES TO CARRY YOU INTO THE 21st CENTURY

The guest speaker for the meeting is **Mr. T. J. Kistner**, division manager of the regional office of **First Investors Corporation** located in Metairie, Louisiana.

First Investors is a sixty-five year old investment firm with their executive offices at 95 Wall Street, New York, NY.



Front Bumper Plates	\$7.00
Windshield Decals	\$2.00
Eden Isles Drive	
Gerry Silbernagel	646-0104
Sid Menard	649-3555
Moonraker Drive	
Bernice Giroir	646-1283
Blackfin Cove	
Pat Northup	646-1314

MOVING SOON!

Movers & Company

Mandeville, LA
(504) 624-5017

New Orleans, LA
(504) 522-3377

Slidell, LA
(504) 649-1755



linda fisk

We'll Move You
Around the Corner or
Around the World

LOCAL • WORLDWIDE

Edward D. Jones & Co.®

Member New York Stock Exchange, Inc. and Securities Investor Protection Corporation

JANICE SUE GERMAN
INVESTMENT REPRESENTATIVE

POST OFFICE BOX 27
SLIDELL, LA 70459

(504) 641-6547

Letters



ONDINE BLOCK PARTY

You should have seen them! Witches, druids, the grim reaper, Dracula's bride, the bob nose job, cowboys (thankfully no Indians for peace sake), pumpkins, and plain-clothes people, all kept in hand by gentle old "Mamaw." They ate supper in the street under the sparkling (some-what) streetlights of Ondine Lane. Fourteen families held their first annual block party on Halloween night. There, in the street, these neighbors greeted trick-or-treaters and their escorts. It's hard to say who had the most fun, but all agreed the "dish to pass" supper really passed muster for great Halloween fare. With ghoulish sounds from Miss Ginger's tape recorder and the voices of neighbors urging trick-or-treaters to "take all you want," there was good company and lots to eat while all waited for the next troupe of treaters to come down the lane. Neighbors agreed it was a great idea. Watch for us next year!



Thanks, Annabelle's!

After living in Eden Isles for almost three years, my wife and I decided to celebrate our fifteenth wedding anniversary with dinner at Annabelle's. It was our first visit to the restaurant. The lobster we ate was delicious, the atmosphere perfect, and the evening wonderful. We couldn't have asked for better service.

We had a conversation with the owner, Fran Hall, who was personally waiting on her customers. We happened to mention that we were Eden Isles residents and Association members, and that it was our anniversary. We also told her that we had learned about Annabelle's from a gift certificate we had received in our welcoming package when we moved here.

When the time came to pay, we were pleasantly surprised. We learned that anniversary champagne was free, and we received a ten percent discount for being members of the Homeowners' Association. On top of all that, our previously mentioned (and long-lost) gift certificate was honored, even though we did not bring it.

I believe that Eden Isles is lucky to be near a business like Annabelle's. It's good to know that there still are people, total strangers, who nevertheless care about us.

Just Married
(15 Years Ago)

Andrew Kobeszko

DIRECTORY

The 1995 Directory is out, and even though we worked very hard to keep the information accurate and up-to-date, mistakes can happen. When people die or divorce during the year and nobody informs us, their listings in the Directory do not change. There are also some who simply wish to change their status from listed to unlisted or vice-versa. If you want to correct or change your entry, please call me at 641-4869.

We want to thank all the advertisers who made it possible for us to publish the Directory. Special thanks to Latter & Blum, whose funding allowed us to print the cover in full-color for the first time. We hope you enjoy this new design.

Ironically, there was a disappointingly low interest in advertising in the Directory among local businesses and Eden Isles residents who own businesses. We have made a strong effort to improve the Directory and make it more attractive. If you have a business, please consider advertising in next year's edition. If any of your family members or friends owns a business, please tell them about the Directory and The Eden Islander.

The circulation of this year's Directory is 2,100, and copies are distributed to Eden Isles, Oak Harbor, Marina Drive, and local and Slidell businesses. If all goes well, we will include Oak Harbor and Marina Drive residents in next year's listings.

Finally, a word of thanks to Hank Lawton, who has been a tremendous help in preparing the Directory.

Hollye Heffernan
Park Lane Jewelry Representative

Party Plan* or
Individual Orders Taken

3-8343

Eden Isles Resident

*** Earn free jewelry as a hostess!**

 **MARY KAY®**

Rose D. Cooper
Independent Beauty Consultant

662 Marina Drive
Slidell, LA 70458
504-643-7255
1-800-242-7870

**EDEN ISLES
COAST GUARD AUXILIARY**

by Evelyn P. Nelson

The Eden Isles Coast Guard Auxiliary (Flotilla 4-8) meets every second Wednesday of the month at 7:30 PM at the Tammany Yacht Club. Visitors are welcomed at these meetings.

Boating Safety and Seamanship classes for the general public are scheduled to begin Tuesday, February 14, from 7:00 PM to 9:00 PM. These classes will be held at the Tammany Yacht Club every Tuesday and Thursday and will run through Thursday, March 16. There will not be a class on February 28 since this is Mardi Gras Day. Courtesy Vessel Exams by appointment are now being offered - Contact **Ken Corey** at 643-8846 or **Jim Dupre** at 645-9236

**LEGAL
SERVICES**

★ **BANKRUPTCY OR UNCONTESTED DIVORCE \$200 from**

- ★ PERSONAL INJURY **NEGOTIABLE**
- ★ OROGRAPHIC WILL **FROM '25**
- ★ SUCCESSIONS (PROBATE) **FROM '300**
- ★ ADOPTIONS/STEP PARENT **FROM '350**
- ★ BASIC INCORPORATION **FROM '150**
- ★ CHILD SUPPORT/ALIMONY **FROM '300**
- ★ CONSULTATION **FROM '25**
- ★ NOTORIZATION **FROM '10**
- ★ REAL ESTATE/COLLECTIONS (PLUS COST)

JERRY K. SCHWEHM

★ **ATTORNEY AT LAW**
★ **NOTARY PUBLIC**
★ **649-2804**
1453 W. LINDBERG
(I-10 SERVICE RD.)

POLITICS THAT AFFECT US

by Shanna Labourdette

ROAD REPAIRS

Road repairs of five streets are scheduled to begin in the next week or so, District 13 Police Juror Gary Rinck said. Residents of Anita Place, Lorelei Circle, Valiant Lane, Eydie Lane, and Chubasco Lane are all getting overlay work done, partly financed with their own voluntary funds. The overlays were made possible after Rinck maneuvered with the Police Jury and managed to acquire road patching funds to supplement the \$100 paid by each household on those streets.

Without the voluntarily assessment, repairs of streets in Eden Isles may have been years away, since Police Jury road repair funds are allocated on a lengthy priority list encompassing the entire parish. Other streets may again have the opportunity to enlist in this innovative program in the future, Rinck said.

GAMBLING

A major victory has been won in efforts to keep a riverboat casino out of Oak Harbor and elsewhere in St. Tammany Parish. (Re-

cent polls conducted by our legislative delegation reveal that nearly 80% of local residents oppose riverboat gaming in their own backyards.)

A recent Louisiana Supreme Court ruling allows parish zoning authorities the power to prohibit gameships. This is a landmark decision in the best interest of a government "by the people and for the people." We are the ones who will decide whether or not we want gambling in our parish, not a group of politicians in Baton Rouge.

State Representative Pete Schneider (R-Slidell) has just written legislation which seeks a public referendum on the issue of riverboat gaming in St. Tammany. The Police Jury has also expressed the intent to let the people decide. The Supreme Court's new zoning decision is just additional insurance to keep a gameship away, Schneider said.

As you will recall, the gaming issue was raised last year when one investor made clear his interest to bring a gaming ship to the Oak Harbor East area. We will probably hear more on that soon, since the Resolution Trust Corporation is scheduled to close bidding at the end of this month.

*Building? Remodling?
Redecorating?*

WALLPAPER & BORDERS

Huge Selection In Stock!
MINI BLINDS, VERTICALS
WOOD BLINDS & PLEATED SHADES

Paper Chase

INTERIORS

767 Robert Blvd Inside Carter's Appliance

654-9473

CALLING ALL RETIREES!

We hear there are a bunch of retirees in our wonderful neighborhood. If you are now free to do as you please while the rest of the world is in traffic on their work schedules, give us a call and be counted. Who knows? We might get together and find some fun things to do during the day. Call **Boni and Bob Johnson** at **641-2644**.

OPERATION "DELIVERY"

The 1995 Directories were delivered on Saturday, January 21, and it was quite an event. Children as well as adults, and a lot of both, were out in the streets distributing phone books. Some people started out with about 50 copies, but enjoyed it so much they came back for 300 or so more. And small wonder - the weather was gorgeous and it was a great way to meet neighbors. Everything was coordinated by Bill Northup at "Headquarters" - his van.

Our neighborhood babysitters were given a chance to deliver directories in exchange for being listed in the Islander. All of them were very enthusiastic about the idea. A big thanks to everybody who participated - your help was invaluable.



Three of the younger volunteers - Heather Northup, Mandy Baker, and Lisa Fascio - in front of Bill Northup's "Headquarters."

Quality framing Canvas replicas

Tricia's
Frame & Gallery

3805 Pontchartrain Dr. 639-0068

W E L C O M E

WELCOMING COMMITTEE

The number of newcomers in Eden Isles is dropping as empty lots for new constructions become scarcer. In 1994, the Welcoming Committee welcomed 123 families into Eden Isles, 52 less than the year before. Once again, the most families (28) moved to Moonraker. Eden Isles Drive was second with 12, and Blackfin Cove was a close third with 11. Windward Passage and Charles Court both had nine, and Pebble Beach had six.



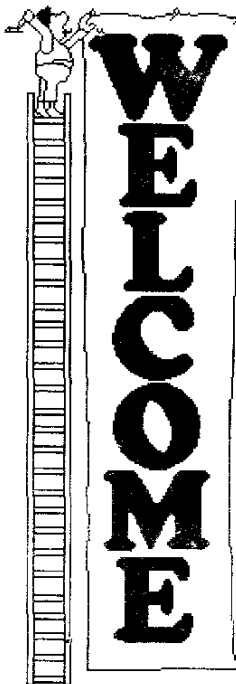
*Beth
Kobeszko*

To anyone who has been welcomed within the past two years or so: I would like to know your opinion about the welcoming packages. Please call me at **641-4869** and tell me what you think is good and bad, what could be changed, and what else could be included. Any suggestions are welcome. I will use this information to improve the packages for future newcomers.

I want to thank **Carmen Gallagher** for all the work she is doing for the Welcoming Committee. Her job is collecting materials from businesses and putting together the newcomer packages. She's very dependable, and we couldn't do our work without her.

I would also like to thank all the businesses that support the Welcoming Committee by donating gift certificates, discount coupons, and other offers for our packages. If you need any of the services they provide, please consider these businesses.

On behalf of our Association, I would like to welcome the following residents and their families who have recently moved into our community:



*Frank Appe
Ted Arrington
Edgar Chauffe, Jr.
Richard Colvin
Craig Earhart
Adolph Finnie
Esther Holzenthal
Victor Lockhart
Eric Lucas
Charles Napolitano
Paul Nicoletti
Leslie Pennington
William Root
William Stubbs, Jr.*

Best wishes for the New Year!

GREENFORCE

by Peggy Menard

1994 ended with the resignation of our GREENFORCE Chairperson, **Pam White**. Pam, who also served as secretary for the Architectural Committee, has expressed a desire to take a sabbatical from some of her public service. Please join us in thanking Pam for unselfishly giving of her time, energies and talent to make our community a better place to live. Before resigning from her duties, Pam asked that I oversee GREENFORCE until the Board of Directors decides who will be the permanent chairperson. Anyone wishing to take on this position should contact me or any of the other board members.

If you haven't seen our ground maintenance crew working in the main part of the subdivision, it is because they have been spending much of their time cleaning around the lake shoreline on Moonraker Island. Please drive out and see the improvement. This was a commitment to the residents of Moonraker when GREENFORCE was first founded. The crew will continue to maintain the parish right-of-way around the lake but will not work on privately owned lots.

A big thanks to **Beth Kobeszko** for her welcomed donation of \$50.00 from her Eden Isles real estate sales. Beth has pledged to donate to GREENFORCE for every house she sells in the subdivision.

January is that time of year when we ask for your continued support for GREENFORCE. Our work cannot continue without your commitment, which still remains at \$35.00 per year. We had almost 400 families participating in 1994, and we hope 1995 will be an even more successful year. Our work in replanting the subdivision will continue this year, as well as our perpetual maintenance program. It is our hope to secure an arborist to help maintain the shrubbery trees and plantings once a month. If anyone wishes to volunteer time working in the gardens, please contact me, and I will demonstrate correct pruning methods. We want to make sure the shrubs are properly cared for - as an example, Sago Palms should never be pruned. They are usually moved or replaced when they get too large. Once pruned, the fronds discolor and do not grow out.

If you have recently moved into the subdivision and are landscaping or redoing old gardens, I have a list of suggested plant, shrub, and tree materials to use which do very well in Eden Isles. Please call me at **649-3555** and I will forward you a copy of the list.

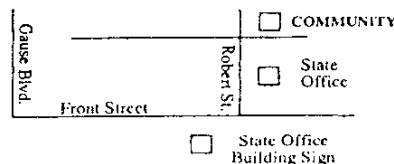
COMMUNITY FEED & GARDEN, INC.

2320 Carey Street

(Across from the State Office Building)

643-5327

Mike and Rosalie Bruce
Owners

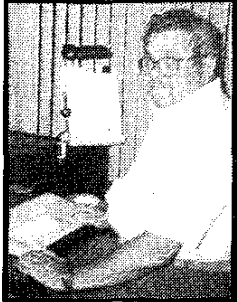


FERTILIZER • ANIMAL FEEDS • BEDDING PLANTS
LAWN & GARDEN SUPPLIES • PET SUPPLIES
AND MUCH MORE!

SECURITY

by Sid Menard

Last year was very successful for our Security System. Participation was at record levels, with almost 500 contributors during

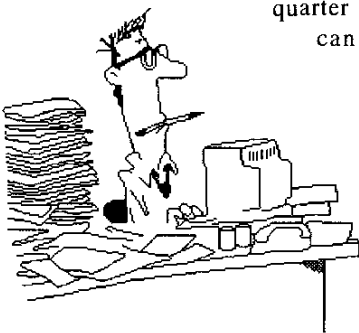


the year, but not all in each quarter. The extra money was used to increase evening guard hours and to put late night off-duty deputy sheriff patrols on the streets during the last quarter. These

patrols effectively kept criminal and vandal activities to a bare minimum. To the best of my knowledge, only two episodes were in the local police reports, both minor thefts.

We look forward to increased participation during this new year, so that we may be able to add additional deputy patrols, including some during the daylight hours. We do not have the most sophisticated system, but it is as effective as it can be considering the number of people contributing.

Even with the increased donations last year, we were overspending collections in the last quarter by using up some of our reserves. Therefore, we must scale back some of the guard hours this quarter until we can determine



the level of collections. When we add back to the services, it will be to the roving deputy sheriff patrols first, so don't be surprised to see fewer guards during the daylight hours for a few months. We are not reducing the guard coverage during evening hours.

As you have seen from your first quarter statements, we have added a new annual

payment to our schedule. If you wish to save money by paying the year in advance, you can pay \$165 during the first quarter and save \$15 for the year. However, don't be discouraged if the holiday bills have put you in a bind, because you can also pay \$45 now and \$125 in the second quarter for the balance of the year and save \$10. This will help us by reducing book-keeping records and printing and mailing expenses.

If you aren't a security supporter at this time, please give us se-

rious consideration. The system, even with its flaws, is offering us a level of protection that few other subdivisions in this parish enjoy. The better systems also own their streets and pay far more than we request.



(504) 863-3642

M.P. "PETE" SCHNEIDER, III
REPRESENTATIVE
DISTRICT 90

HOUSE OF REPRESENTATIVES
STATE OF LOUISIANA

P.O. BOX 400
SLIDELL, LOUISIANA 70459



Walter J. Segrave, Jr.
Registered Representative
for NYLIFE Securities, Inc.

NEW YORK LIFE INSURANCE COMPANY

639 LOYOLA AVE.
SUITE 1900
NEW ORLEANS, LA 70113
(504) 569-0500

SERVING EDEN ISLES AND BEYOND

LIFE • HEALTH • ANNUITIES • IRA'S • MUTUAL FUNDS
ESTATE PLANNING • RETIREMENT PLANS • BUSINESS INSURANCE



THE COMPANY YOU KEEP
SINCE 1845

LOCALLY
112 RAMPAGE LOOP
SLIDELL, LA 70458
(504) 847-0923



La Grande Maison

Jan Sims

153 Robert Street
Slidell, LA 70458

847-9158
649-4286



Brakefield Manor

224 Brakefield
Slidell, Louisiana

649-0198
643-4273
649-4286

Jan Sims

Catering to all occasions - Our Place or Yours
Call for information: 847-9158

We still boil our starch the way Grandma use to do it!

Slidell Cleaners, Inc.

Since 1929

We're in the neighborhood
ON THURSDAYS!

QUALITY SHIRT LAUNDRY & DRY CLEANING
CONVENIENT DELIVERY SERVICE

300 Robert Street, Slidell, LA 70458
Mary & Eric DuBuisson 643-3056

Chris' Seafood

RESTAURANT & MARKET HOME OF

**Slidell's Largest
Seafood Platter for Two!**

Complete line of
crabs, crawfish,
shrimp, and
seasonings

Hours:
Sun.-Thurs. 10 AM - 9 PM
Fri. & Sat. 10 AM - 10 PM

Free delivery

Lunch specials daily
Mon.-Sat. 11 AM - 3 PM

3333 Pontchartrain Drive

646-0500



CUSTOM CURB, INC.

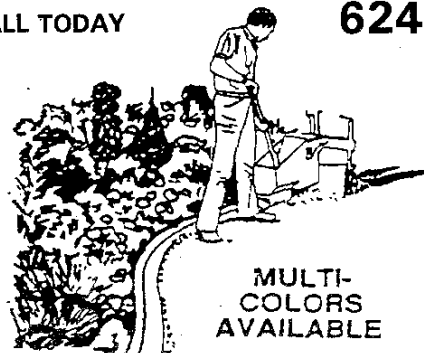
FIRST IN LANDSCAPE BORDERS

" Will Not Be Undersold "
CONTINUOUS CONCRETE LANDSCAPE
BORDERS
RESIDENTIAL • COMMERCIAL
SAVES HOURS OF EDGING, TRIMMING AND WEEDING TIME

FREE ESTIMATES

CALL TODAY

624-8910



MULTI-COLORS
AVAILABLE

TAMMANY YACHT CLUB

by Suzy Sale



Let me tell you a little about Tammany Yacht Club. We have approximately 140 members (each family is one membership, so multiply that by the family factor for true count) with a strong interest in boating, socializing, and increasing our knowledge and pleasure of boating. Meeting, dining, and bar facilities are above Marina Cafe, with day docking in the Grand Lagoon of Oak Harbor. Our boating activities include power and sail cruising, racing, and parading. There are seminars to help you enjoy boating more and Juniors activities for the young crew members to introduce and teach them boating skills. Membership in TYC will expand boating, social, family, and personal opportunities and offer you reciprocal privileges at other yacht clubs throughout the world.



Tammany Yacht Club is very much a part of Eden Isles, and a large percentage of our membership lives in there. Many of you as well as friends and family were witness to one of our fun activities in December - the Parade of Lights in Eden Isles. There were about 27 power and sailboats festively decorated with twinkling lights. There were lighted figures of snowmen, Santa, Christmas trees, and one person who wrapped himself in strings of lights and stood on the bow swinging a lighted strand in greeting. We on the boats also enjoyed viewing the lighted decorations in your back yards. Next year's parade will be bigger and better, and we invite you to join.

Our January activities include Thursday night Happy Hour, Friday night dinners, a Souper Night (soup is served), a Chili cookoff, and a Super Bowl Party. We will soon have Wednesday night racing; to participate, call **Jim** at **646-0766** by March 8. If you would like to join us for one of these activities or want information about Tammany Yacht Club, call Membership chairman **Ed Kacer** at **641-3694** or **Kaarin**, Manager of TYC at **649-5222**.



Thanks to The Eden Islander staff for inviting Tammany Yacht Club to write a column in their newsletter.

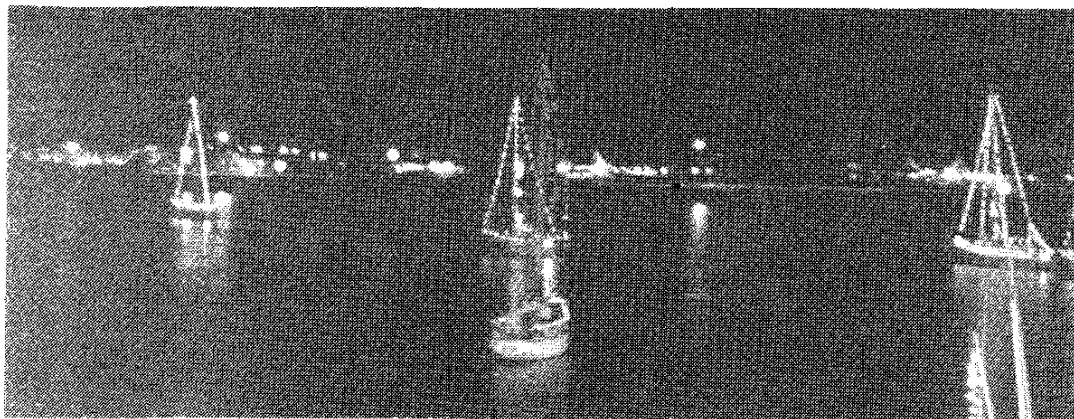
Suzy Sale is the editor of the Spyglass, the Tammany Yacht Club's monthly newsletter.

BITS AND PIECES

by Pam White

In remembrance... Marilyn Cazaubon, the original author of this column, passed away December 26 at the age of 71. Marilyn and her husband Maurice were long-time residents of Eden Isles and very proud of that fact. She enjoyed telling others about where she lived, and expressed her love for her community through service to it. At the time of her death, Marilyn was serving as Secretary to the Board of Directors for the Eden Isles Homeowners' Association, author of the Shoreline column in the Slidell Picayune, contributing columnist to the Eden Islander, and an active member of the Eden Isles Garden Club (of which she was a past President). She was also active in several service organizations in the Slidell area. Her loyalty and dedication to this community should serve as an inspiration to us all. She will be sorely missed, and our condolences go out to her family during their time of loss.

Boats lit up during the Christmas Parade of Lights, organized by the Tammany Yacht Club.



4820 Pontchartrain
Slidell, La.

Phone: 646-0021


Annabelle's
RESTAURANT & LOUNGE

Seafood, Steaks, Veal, Spaghetti, Hamburgers

60' Dock for Watercraft
(enter at Eden Isles Marina)
Private Parties accepted

FRAN HALL
Owner & Manager

With the coming of a new year, it seems only natural to sum up the old one before letting it go. I have gathered some statistics that should do just that with the real estate market.

The past year was another great year for Eden Isles. About 80 families moved into newly constructed homes in 1994. The resale market was also busy. According to the Multiple Listing Service, 35 houses were sold, with an average price of \$146,747. The prices ranged from a low of \$104,000 to a high of \$335,000. All

three of these figures have risen over the previous

year's. The average market time was 59 days, ten days shorter than in 1993.

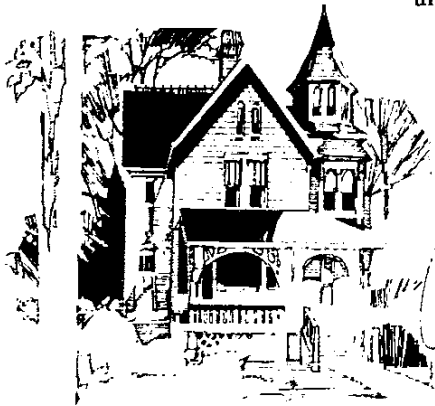
As of January 20, 1995, there are 17 houses for sale in Eden Isles. The prices range from

\$124,500 to \$289,900. These statistics do not include "For Sale By Owner" properties and new constructions. They are not guaranteed but have been obtained from sources I believe are authoritative.



As I already mentioned, the resale prices of Eden Isles houses are rising. This could

DON'T READ THIS...
...UNLESS YOU CARE ABOUT YOUR PROPERTY
BETH KOBESZKO



be due to a larger demand for waterfront properties, combined with a smaller supply of vacant lots in our subdivision. Also, the improvements in the landscaping of the common grounds probably had an influence. We have GREENFORCE and all of its supporters to thank for that.

As for New Year's resolutions, please don't forget to support the **Homeowners' Association**, **SECURITY**, and **GREENFORCE**.

Low Cost
No Contract

Slidell 643-7437
Metro Dial 1
Free Call

Pro's Pest Control Service, Inc.
 Environmental Specialists
 Servicing a 4 Parish Area

Roy Provenzano - Owner
147 Eden Isles Dr.
Slidell, LA. 70458

Full Service Available
Including Reasonable
Termite Control Rates
Terms Available

1 Day Service on Termite Certificates

CONCERNED MAIDS

Gwen Leitz

(504) 649-3836
(504) 847-8538
Voice Pager

Old Fashioned Cleaning
At Reasonable Rates
HOURS 8:00 AM 5:00 PM

References Furnished

MARKS LAWN CARE

10 years of lawn and garden care

CUTTING EDGING TRIMMING BLOWING ETC.

CALL:

643-5060 — 641-2824

DEPENDABLE AND REASONABLE

2916 Camellia Dr.
Slidell, LA 70458

GG PRINTING

649-4305

2137 First St.
Slidell, LA 70458

KREWE OF THE BILGE

by Harriet Drewes

The history of the Krewe of the Bilge goes back to the year 1978, when a few residents got together to celebrate Mardi Gras their own way. The total parade consisted of 2 or 3 boats going through the Eden Isles canals to the backs of residents' homes and throwing carnival beads and trinkets. This group formed what is now known as the Krewe of the Bilge.

Every year from its beginning, the amount of boats participating in the parade has grown, from the 2 or 3 in 1978 to in the 30's in 1995. The parade is held the third Saturday before carnival. It begins at noon and travels through the Eden Isles waterways, from the Marina, down Lakeshore Drive, around Highway 11, to the Eden Isles bridge, and up the Moonraker side back to the Marina, throwing beads, trinkets, cups depicting the Krewe's emblem, and anything else that will make it to shore. The Captains throw black cups, the Officers of the Krewe throw white cups, and the general members throw purple, gold, and green ones.

The really unique thing about this parade is not only that it is a boat parade, but also that each member who enters a boat selects a sub-theme from the Krewe's main theme. The individuals who ride on the entered boats make their own costumes and decorate their boats to match their themes. The boats are judged each year by the other boat entrants, who look for boat decorations and costumes designed to match the theme of each boat. There is a "Best Overall" trophy, which encompasses decorations, costumes, and the overall effect of the boat; a First, Second and Third Place trophy for "Best Decorated"; a First, Second and Third Place trophy for "Best Costumes"; and last, but not least, a "Novelty" trophy for the funniest boat.

The Co-Captains of the Bilge are Kenneth Valentine Comeaux and Donald Edwin Drewes. They, along with a dedicated Board of Directors, work together to give Krewe members as many events throughout the year as possible.

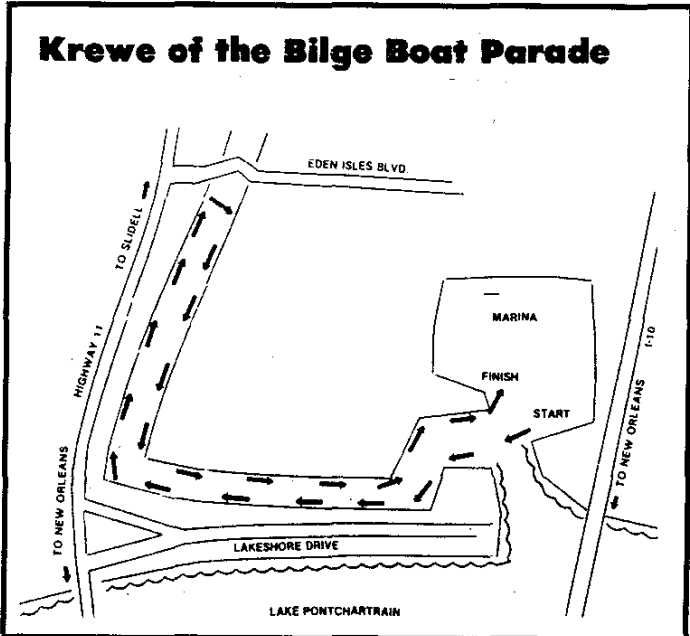
This year's King was chosen at the Fall Dance. The male members of the organization interested in becoming King can join the King's Club by putting their names in the box. Later in the evening, one name is picked, and the Captains traverse the hall to find the person whose name was selected to reign for the next year. When he is found, the Captains will crown him and escort him around the floor. The King who is selected will lead the annual parade behind the Captain's boat.

In 1986, the Krewe had its first full court presented to the Membership. The Coronation Dance, held five weeks before Mardi Gras, introduces the Court, King, and Captains to the attending guests. There is a maximum of seven maids, seven Ladies in Waiting and four Attendants selected to reign the year.

A Queen is selected from among the Maids on the night of the Coronation. At the beginning of their walk, each Maid's Duke selects a bouquet at random from the Queen's table. After all the Maids have made their proces-

sion, an envelope is given to the narrator. It contains the name of the item the Captains will be looking for in the bouquets. The Captains investigate each bouquet, and when the item is found, the Maid is brought forward and crowned Queen.

The Parade for 1995 will be on February 11, 1995, starting at noon in the Eden Isles Marina.



DAVID J. HILDEBRANDT, DDS

Family Dentistry

DENTAL WELLNESS FOR ALL AGES

MON	9-2
TUE	10-6
WED	9-5
THU	10-6
FRI	9-2
SAT	8-2

Gentle Treatment.

You'll like the personal attention we give to your total dental health and appearance!

You'll appreciate our caring staff, gentle treatment, laboratory, complete dental wellness program, affordable fees, immediate emergency care and appointments that meet your schedule

Most Insurance Accepted
0% Financing Available

643-0304

1680 Old Spanish Trail • Slidell

ACE Hardware

PONTCHARTRAIN HARDWARE & LUMBER, INC.

Tools Paints Electrical Plumbing Lumber Lawn & Garden Marine

Devoe

Benjamin
Moore

THANKS TO YOU WE'RE WORKING!

Mon. - Fri.: 7:30 - 6:00

Saturday: 7:30 - 5:00

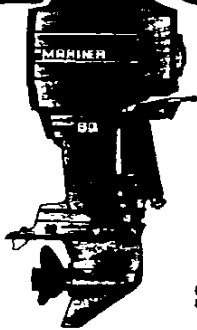
Sunday: Day of Rest!

Phone: (504)-643-4672

3320 PONTCHARTRAIN DRIVE - SOUTH SLIDELL-

KICK SOME BASS!

M. M. MARINE INC.



SALES, PARTS, SERVICE, ACCESSORIES, BOAT REPAIRS

Visit Our New Expanded Facilities

MotorGuide 3300 Pontchartrain Dr. Slidell, LA

magic tilt

504-646-2829

Revolutionary Prices On All Mariner Outboards



MARINER[®]

OUTBOARDS

AT SANTA'S KNEE

by Boni Johnson

Wow! Did I luck out this Christmas! I got to sit at Santa's knee and pass out angels. And not just any old angels, but the shiny silver ones, each handmade by a loving Garden Club lady at one of the five day-long workshops they held in November and December.

When I arrived at Nell and A. J. Forstall's home on Carina Drive, children and parents were already lined up on the dock by the gazebo waiting patiently for You Know Who in the you know what! When Santa finally did arrive by boat you could hear lots of cheering and clapping. He looked great.

He settled himself in his chair, and the children came and sat on his lap to tell him what they wanted. Parents and grandparents stood nearby eating cookies, having a drink, and taking lots of pictures. A few took requests made of Santa. A few other parents reminded their children what the child wanted. In any event, all bases, ah..., er..., wishes were covered.

My joy was seeing how gently Santa treated each child. He was caring and attentive whether he had a single newborn or three children on his lap. He seemed to know each boy and girl personally. When they couldn't remember what it was they wanted, he gently offered that they might like him to surprise them. One handsome six-year-old auburn-haired, freckle-faced boy smiled and gave an enormous sigh of relief with that offer. Santa asked what they would do with certain toys. He talked a ten-year-old girl into waiting a little while longer before he brought her the car she was requesting. He asked one lad of about seven if the boy would kindly clean out his fireplace this year. Santa said he had gotten pretty sooty last year. The boy looked a little amazed but nodded in agreement.

There was a pair of brown eyes in the cherub face of a three-year-old girl that I remember. Her mother plunked the little girl down on Santa's right knee, then distributed her two brothers on Santa's other knee and the remainder of his right knee. The precious little girl didn't blink or change her gaze for an instant, but intently gazed at Santa's face, just six inches from her own. I wondered if she was getting ready to pucker up and cry. But at the end of her two brothers' orations,

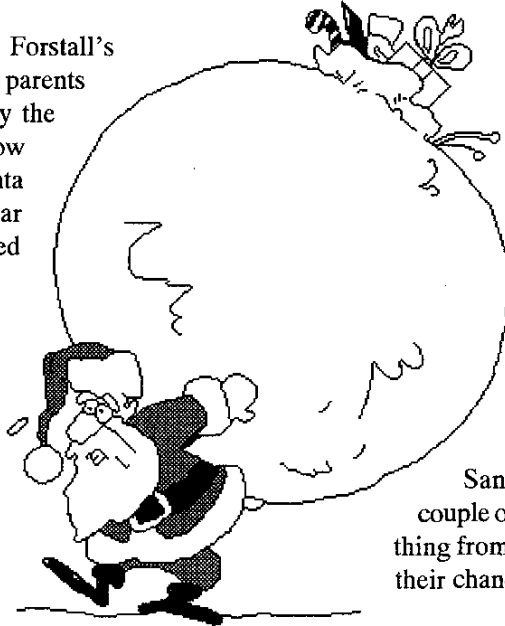
she took a deep breath, opened her cherubic lips, and said, "I like your face." Santa smiled at her and said, "I like your pretty brown eyes," to which came the immediate response of deliberately fluttering her eyes at him. It wasn't wasted, I assure you.

I noticed that when any two children of walking, talking ages each climbed on Santa's knee and he said, "Who's first?" it was always the older child who initiated the list. Two little girls about five and seven followed that pattern. When the older sister finished, Santa asked the littler girl what she wanted. She looked a little surprised, glanced at her sister and said, "She just said. For me, ditto." A similar litany occurred with two sisters. They had a list that lasted a long two minutes. Santa listened patiently. The little sister said to the bigger one, "Was that all we wanted?" The bigger sister said, "Yeah, I think so. If not, we can tell Santa in the next store we go to."

Some of the three-year-olds were very brave while waiting in line. Getting on Santa's lap! That changed everything for a couple of them. They decided they didn't want something from that guy that badly! Looks like they'll take their chances on good old mom and dad.

The weather was perfect. Every child got a choo-choo train, handmade from a pack of gum, peppermint candy wheels, a caramel cab, and a Hershey's kiss smokestack. Then came their silver angels and a wish for a very merry Christmas.

Thanks to all who participated. Isn't it great to live in the isles where Santa can visit us by boat? I think so.



"Your Kids Will Flip!"

GYMNASTICS PLUS

- Certified, Experienced Instructors
- Boys & Girls Ages 1 Year & Up
- Improve Physical Fitness
- Improve Self Esteem
- Mom & Tot Together
- Cheerleader Tumbling
- Competitive Teams (USGF)
- Bi-monthly Evaluations & Awards
- Tumbling, Balance Beam, Vaulting, Still Rings, Uneven Bars & More!

2137 GAUSE BLVD.
(Behind K&B in Slidell Square Shopping Center)

SLIDELL, LA 643-0914



COMMUNITY OF NORTH SHORE TEAM 11

by Fran Hall

Some Highway 11 business and property owners from the end of the bridge to the tree line at Slidell are meeting together as a group to tackle some of the problems that exists along our street. It all began when **Gary Rinck**, parish juryman, contacted me and asked me to help form a group of business and property owners to undertake a beautification project. A tremendous amount of interest and enthusiasm has been generated.

Our group is named "Community of North Shore Team 11." Its goals are to make the Highway 11 strip more pleasing to look at and to promote interest in the businesses in the area. Two meetings have been held at **Annabelle's**, with another scheduled for **Monday, January**

Will this strip of Highway 11 become a bustling business area?

23, at 7:00 p.m. Two projects are underway - Operation "Clean Up On Sunday Morning" and Operation "Street Lighting." The first will take place on January 22 at 9:00 a.m. and is chaired by **Alan Templet**, a property owner; the latter is chaired by Mary Thiesen of The Landing. Other projects we are undertaking are grass cutting on empty lots, chaired by **Lola Loubat** of Bayou Bount, and the removal of dangerous buildings with the help of **Gary Rinck**.

If you would like to help or join in these projects in any manner, our group can be contacted through Eden Isles Hardware (641-9502, ask for **Richard or Dallas**). Come join us - we have some great news for you!

Fran Hall is the owner of Annabelle's Restaurant located at 4820 Pontchartrain Drive and very active in improving Highway 11.

WORLD CLASS SERVICE

GUARANTEED AT

JOHN BROWN MOTORS

BUICK • GMC • OLDS • PONTIAC • MAZDA
NEW & USED CARS

643-2277

293 Howze Beach Rd. (I-10 Service Road At 433) Slidell

For All of Your Personal or Business Banking Needs.

- *Checking*
- *Savings*
- *Investments*
- *Loans*
- *Mortgages*
- *Small Business*



HIBERNIA

MEMBER FDIC

Hibernia National Bank Offices in New Orleans, Baton Rouge, Alexandria, Lafayette, Shreveport, Monroe and Jefferson, St. Tammany, St. John, Bossier, Livingston and Ascension Parishes.



100% Satisfaction or My Commission Back!



DIANNE ROMANO

*Gives You
Satisfaction
Guaranteed*

(504) 649-6661

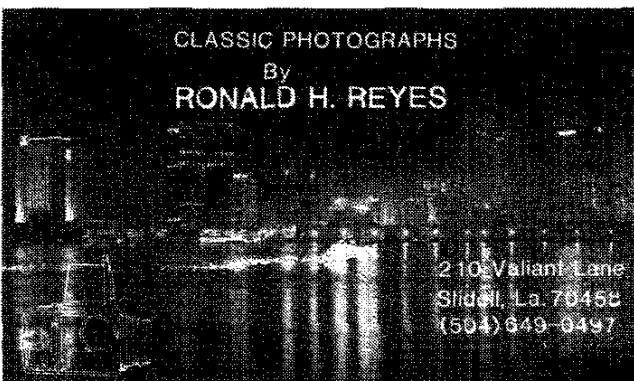
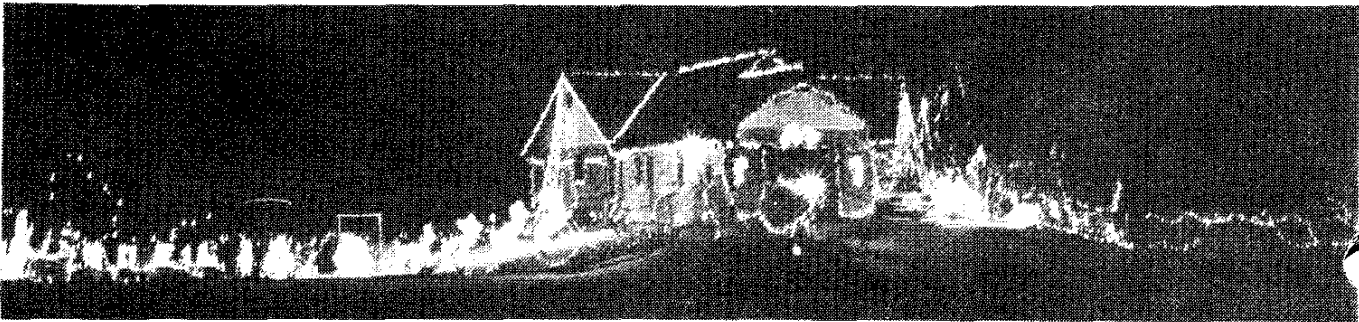
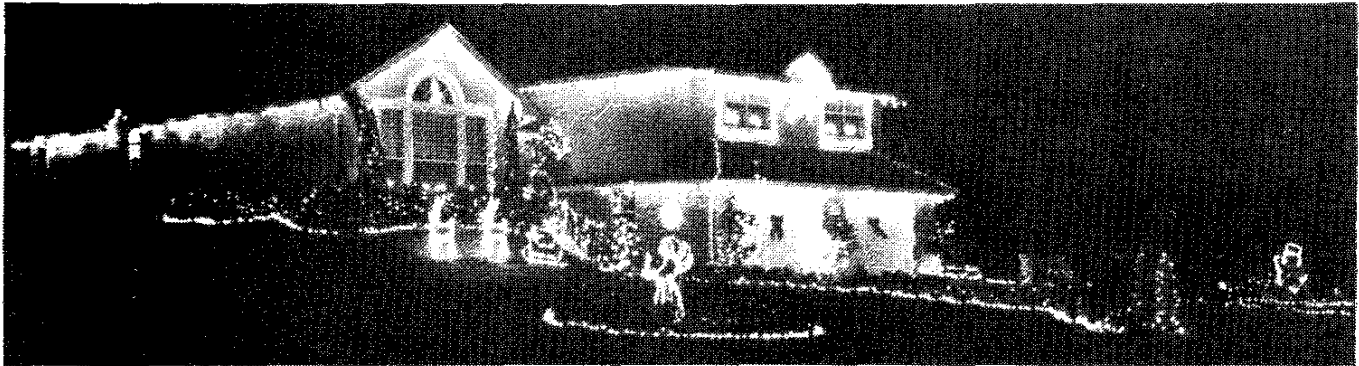
**UNTIL NOW, PEOPLE
WOULD DO ALMOST
ANYTHING TO AVOID**

Real Estate Agents



**MARTHA ANN
SAMUEL**
INCORPORATED REALTORS

Christmas Magic



CLASSIC PHOTOGRAPHS
By
RONALD H. REYES

210 Valiant Lane
Slidell, La. 70458
(504) 649-0497

From top :

128 Pebble Beach Drive; **Daniel and Marcella Gabourel**

210 Eden Isles Drive; **Jacob and Gertrude Elder**

101 Gretel Cove; **James and Martha Leach**

All photographs courtesy of Ron Reyes.

GARDEN CLUB

The ladies of the Eden Isles Garden Club have been very busy over the holiday season!!! Members attended a Flower



Pam White

Show hosted by another local Garden Club, toured several Slidell gardens on a tour hosted by the Ozone Camellia Club, and attended several workshops to help prepare for the Christmas activities hosted by the Garden Club. They also made ornaments and decorated a Christmas tree which was displayed at "Christmas Under the Stars" in Old Town Slidell over the holidays.

Because of an earlier deadline on the last issue, November's Yards of the Month were not judged in time to be included. Here they are, a little late but still as beautiful:

1st.- Chan Thang and Rach Le at 104 Intrepid



2nd.- Daniel and Marcella Gabourel at 128 Pebble Beach

3rd.- Mrs. Sidney Mosely at 405 Windward Passage

Honorable Mention:

Mike & Rosalie Bruce at 199 Moonraker

Joseph & Merrilyn Sciortino at 102 Eden Isles Dr.

Roy Bellinger, Jr. at 348 Moonraker

On November 9, several members toured a new gardening center being established in the Rehabilitation wing of Slidell Memorial hospital. After the tour, the ladies worked with several of the patients to plant pansies and an assortment of bulbs that had been donated by the Club.

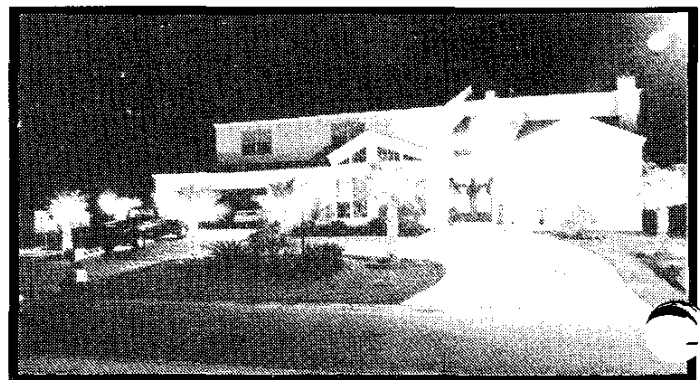
On December 7, the club held its annual Christmas Luncheon at the Tammany Yacht Club. The wonderful cooking was done by several of the ladies in the Garden Club, and a great time was had by all that attended. During the luncheon, \$135 was collected for our annual Christmas Charity. This year the money was donated to the Kidney Foundation.

On December 18, The Garden Club once again presented "Santa by Boat," graciously hosted by Nell and A. J. Forstall

at their home on Carina Circle. Children were treated to a with Santa, after which they were given souvenir ornaments and delicious goodies donated by the ladies of the club. Always a popular event, this year saw over 100 children (with their parents and grandparents) in attendance.

December 19 was the annual Judging of Christmas decorations in Eden Isles. We hope you took time to view all the beautiful decorations around the subdivision. We thought Eden Isles looked better this year than ever before, and we appreciate all those who get into the spirit this time of year. This year's winners are:

1st - Vick and Susan Corso at 98 Lakelawn Drive



2nd - Kenneth and Angie Leach at 200 Chubasco,

3rd - Daniel and Marcella Gabourel at 128 Pebble Beach,
Honorable Mention:

Chan Thang and Rach Le at 104 Intrepid,

Jacob and Gertrude Elder at 210 Eden Isles Drive,

James and Martha Leach at 101 Gretel Cove.

January 2 was the judging for the January Yard of the Month. As you know, winter time is a hard time of year to keep your yard looking good, so we highly recommend you take a drive through your community and notice the work of those people that made a special effort. January's winners are:

1st - Mrs. Josephine Read at Pebble Beach



2nd - Mr. and Mrs. Ronald Williams at 308 Charles Court,
 3rd - Mr. and Mrs. Ronald Bernard at 206 Eydie Lane,
 Honorable Mention:
 Mrs. Sidney Mosely at 405 Windward Passage

On Arbor Day, January 19, the Garden Club will once again sponsor a drawing for two \$25.00 gift certificates good for the purchase of a tree from a local nursery. If you would like your name submitted for the drawing, you can contact either **Boni Johnson** at 641-2644 or **Bonnie Cavignac** at 641-6213.

During its January meeting, the Garden Club voted to establish new standards for judging the Yard of the Month in an effort to make the judging less subjective. For those interested, the criteria established is as follows:

Curb appeal (attractive at a glance)		25 points
Landscape design		5 points
Use of area	2 points	
Use of color	2 points	
Balance	1 point	
Maintenance		10 points
Lawn cut	2 points	
Lawn edged	2 points	
Shrubs neat and trimmed	2 points	
Flower beds weeded	2 points	
Flowers blooming	1 point	
Lawn healthy (appropriate to season)	1 point	
Total		40 points

GARDENING TIPS

by Mike Bruce

Spring is just around the corner, and it's time to start thinking about gardening. Here are a few tips about what we should be planning for.

Many of us have planted pansies for winter color. Now is the time to top dress our pansies with a little blood meal. This will give them a little boost and continue them blooming through the early spring.

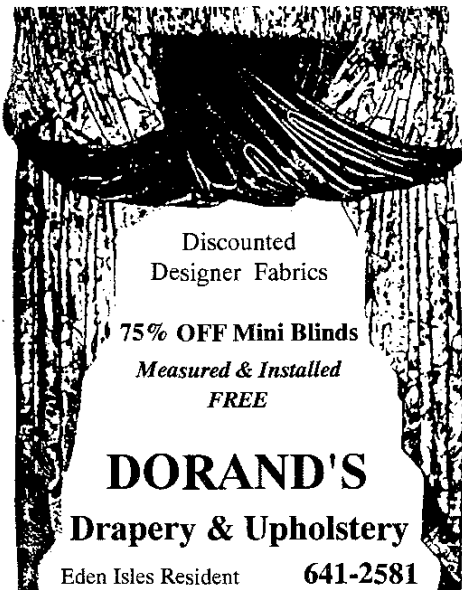
January and February is the time to plant roses in Louisiana. Roses need a well-drained bed and at least 8 hours of sunlight daily. Existing roses should be pruned by mid-February. Cut canes back 15 to 18 inches from ground level. Using a fertilizer with a systematic insecticide on your roses once a month during growing season will help you grow larger flowers and help keep insects from your bushes.

January and February are great months for planting fruit trees. Choose trees that are recommended for our area. Fertilize in February and early March. It is also the time for planting landscape trees and shrubs. Remember that for best results you should plant them before it gets really warm.

Our lawn grass is probably not looking its best right now. Remember that this is its dormant period. Be careful not to push the season by forcing early growth with fertilizer. March is early enough for us to start fertilizing our lawns.

For the vegetable gardeners, it's time to start planting Irish potatoes, beets, carrots, radishes, mustards, spinach, and broccoli. Everyone wants to plant a few tomato plants - they can be put out from March 1 on.

Lets keep Eden Isles green and growing!



Discounted
Designer Fabrics

75% OFF Mini Blinds
Measured & Installed
FREE

DORAND'S
Drapery & Upholstery

Eden Isles Resident 641-2581

PIRO PEST SERVICES

Fleas • Roaches • Ants • Etc.

Maximum Safety for Children and Pets

Free estimates

We keep them under control

641-5886



THE EDEN ISLANDER

A bi-monthly publication of the
 EDEN ISLES HOMEOWNERS' ASSOCIATION
 P.O. Box 2746 Slidell, LA 70459

William E Northup, President

Andrew Kobeszko, Editor

Advertising available -- for rates and availability call Andrew Kobeszko at 641-4869

Circulation: 1,250

THE EDEN ISLES SPECIALIST

Great things happen to people I serve...

BETH KOBESZKO

**THEY
MOVE!**



BETH

641-4869

LATTER & BLUM

INC/REALTORS®

Since 1916

641-1000 ext. 276



PICK THE BEST. I'LL DO THE REST.

I donate to GREENFORCE a percentage of my commission on all Eden Isles listings that I sell.



Homeowners' Association, Inc.
P.O. Box 2746
Slidell, LA 70459

Mark your calendar:

Tuesday, Jan. 31th,
GENERAL MEETING

BULK RATE
U.S. POSTAGE
PAID
PERMIT #63
SLIDELL, LA

8

Don't miss this!

- Tammany Yacht Club News
- "Krewe of the Bilge" Parade
- Community of North Shore Team 11
- At Santa's Knee, and some extras...
... so, what are you waiting for? -- Open up! Read it! Enjoy it!