

THE EDEN ISLANDER

VOLUME VII, NO. 1

JANUARY/FEBRUARY 1994

FREE

I'd like to wish everyone a Happy New Year. I hope you all made it through the holidays safe and sound (and not too much in debt!). We have

400; many more of our residents come to meetings and participate in the activities of our community.

GREENFORCE was established and

has been very successful in helping to beautify our neutral grounds and gardens; security has been improved and

continue to make



Eden Isles the special place that it is. I encourage all of you to come to the Association meetings and to get involved--a neighborhood is only as strong as those who participate.

I look forward to working with all of you in 1994.

A LETTER FROM THE PRESIDENT

a new Board of Directors for 1994 and it was my honor to have been elected President for the coming calendar year.

I want to thank **Sid Menard** for his outstanding tenure as President for the past three years.



Many positive changes occurred in our neighborhood during his Presidency. The Association has grown from 125 members to over

our guards have been responsible for helping reduce crime in our subdivision; additional street lighting has been added, and we have experienced three successful Fishing Rodeos and many Poker Runs. All of these accomplishments have helped make Eden Isles one of the best areas in St. Tammany Parish for property values and quality of life.

I would like to continue down Sid's road of success. I hope those of you who are members will continue to support our community, and I would like to make a special appeal to those of you who do not yet belong, to join and support the efforts of the Homeowners' Association. We have a vital, active organization and we need your support and input to



Deborah Willoughby

THE EDEN ISLANDER

A bi-monthly publication of the
EDEN ISLES HOM-EOWNERS' ASSOCIATION
P.O. Box 2746 Slidell, LA 70459

Deborah Willoughby, President

Annemarie Furphy & Andrew Kobeszko, Editors

Advertising available -- for rates and availability call Annemarie Furphy at 641-9138

Circulation: 1,000

CHIMAERA AND DARCY RESIDENTS GATHER FOR BLOCK PARTY

What a good time was had by those who attended. All the residents of Chimaera Lane and Darcy Lane were invited to a block party on October 16, 1993. About 75% of the families attended. Each family brought a dish to share and everyone commented on how delicious the food was.



Some of the more adventurous adults played volleyball with the teenage and younger residents. It was such a nice way to meet all the "new kids on the block."

This just might become a yearly tradition.

ESTABLISHMENT OF ROVING PATROLS

The Homeowners' Association is thinking of establishing nightly roving patrols manned by the residents. To accomplish this effort, we would need to acquire two cellular phones and organize a large group of concerned citizen volunteers.

We would like to have two cars patrolling at the same time with two residents in each car. This would entail four persons each night with each having a four hour shift. The patrol hours will be from 11:00 pm to 3:00 am and from 3:00 am to 7:00 am. The



cellular phones would be used to contact the Sheriff's department if any problems are encountered. Citizens would be reimbursed 26 cents per mile for the use of their car.

This idea surfaced as a result of an increase in actual and attempted car thefts in our community. For more information, contact Bob Nelson at 649-1230 or feel free to drop by and discuss the plan at 296 Moonraker Drive.

Letters



NEEDED BY THE HOMEOWNERS' ASSOCIATION

If you have upgraded your computer and have the old system in the closet gathering dust, the Association could put it to good use. Please contact me, Sid Menard at 649-3555. THANKS!

25% Off Fabric
CUSTOM DRAPES
BEDSPREADS
60% OFF Mini Blinds
Measured & Installed
FREE
Headboards
Valances
Boat Interiors

DORAND'S
Drapery & Upholstery

EDEN ISLES

641-2581

ADVERTISERS APPRECIATE IT
WHEN YOU TELL THEM...
I saw it in The Eden Islander

GREENFORCE

REPORT

by Pam White, Chairman



I'd like to start the new year by recapping the purpose of the GREENFORCE Committee. We were established to find a means to maintain the neutral grounds within the subdivision. The Parish, the actual property owner, would not and could not, due to the lack of proper equipment, provide this service. Investigations revealed that hiring a service to perform the work, would require an annual investment in excess of \$20,000.

Eden Isles Drive was raised as a safety issue. Greenforce made the effort to address the problem. Of the 20 flowerbeds on the Drive, 7 have been replanted with low-maintenance shrubs which should not impede visibility for drivers. The others beds are being maintained in a reasonable condition until we can afford to have them replanted. A donation from the ladies of the Eden Isles Garden Club has enabled us to replant the flower bed around the anchor at the Hwy. 11 guardhouse. The entrance looks great once again, thanks to the hard work of a few dedicated volunteers!

to approximately \$1.00 per week of the growing season. If you have not yet contributed for 1994 but would like to, checks made payable to EIHOA-Greenforce can be mailed to P.O. Box 2746, Slidell, LA 70459. Funding is also received from the Homeowners' Association--a portion of each membership fee is allocated to the Greenforce committee. So we urge you to participate in your community through all the options available to you!

Support is also needed in more than just monetary form.



Since that option was deemed out of the question, establishing a volunteer committee seemed to be our only option.

In the two years since GREENFORCE was established, I feel we have accomplished our goal admirably. With contributions from the Eden Isles Rodeo Committee and from you, the residents, a SKAG riding lawnmower and other lawn maintenance equipment was purchased. A dedicated group of volunteers have worked hard to keep the neutral grounds mowed. I hope that when you see them, you will let them know that their efforts are appreciated!

We have plenty of ideas for projects to beautify Eden Isles. We have plans to paint the Hwy. 11 guardhouse. We have paint available to paint streetsigns. We hope to try a community workday this spring to prune the oak trees on Eden Isles Drive. Eric Parr of Garden Spot Nursery has volunteered his expertise on this subject if we can supply the labor and materials, so be watching for news in the next issue of the Islander.

There are so many things we can do to keep our community beautiful, but we need your support to accomplish anything at all!!!



Funding is by voluntary contributions from residents. We ask for a \$35.00 donation each year, which works out



WE NEED VOLUNTEERS!!! Greenforce is a volunteer organization, and cannot accomplish its goals without them. I know you read this in every article I write, but it can't be said enough. Anything you can do to help will help, and will be appreciated. If you can ride the lawnmower, please do. We have a handful of dedicated volunteers, but they need some relief. If you can weed a flowerbed or paint a streetsign or help prune oak trees, we need your help! Please support us as you are able. What we can accomplish for Eden Isles is unlimited if we can get volunteers!

Mowing the neutral grounds and will always be our first priority. But as other concerns have been voiced, the goals we have for Greenforce have grown. When the issue of the overgrown flowerbeds on

DISTRICT 13 POLICE JURY'S REPORT

by Marilyn Meier

As previously reported in the December District 13 newsletter, the money previously budgeted to repair Moonraker Drive is only sufficient to take care of perhaps three sections where the road is at its worst. Mr. Rinck and the Public Works Director are hoping to come up with a solution that will give them the maximum "bang for the buck." A proper job from one end to the other would cost approximately two to three million dollars; however, less than \$50,000 was budgeted for this work. The final decision on what exactly will be done is expected to be made within the next few weeks, at which time the exact cost estimates and areas to be repaired will be determined. While not a permanent solution, these repairs should keep Moonraker Drive in reasonably good shape for several years.

There are two sections on Charles Court that are in line to be done in the first quarter of 1994. Minor base work will be done first and then a two inch asphalt overlay will complete the repair. Each section will go from edge to edge and will not exceed 100 feet in length.

In response to residents' concerns about speeding vehicles on Moonraker Drive, Police Juror Rinck had speed limit signs erected. Now that the street is legally "posted," it will enable the Sheriff's Department to issue tickets to violators. Slow down, y'all.

Watch for the next issue of the District 13 Newsletter, coming soon!

ALL HAIL KING NEPTUNE!

Congratulations to Dave Farrar who will lead the February 5th Krewe of the Bilge Parade as King Neptune. The parade will assemble at the Oak Harbor Marina for a 12 noon start down the canal along Lakeview Drive and Highway 11.

The boats, some of them quite large, will be decorated to the theme "Famous Lovers." The throws are plentiful and the parade has become a popular highlight of the Mardi Gras season.

We wish the Krewe of the Bilge, blue skies and smooth sailing!

SECURITY UPDATE

by Marilyn Meier

Once again, this past December off-duty St. Tammany Parish Sheriff's Deputies were employed by our Security Service to provide roving patrols for four hour late night shifts, five nights between the Christmas and New Year holiday period. They reported a relatively quiet subdivision (except for the fireworks on New Year's Eve); initiated several traffic stops for running STOP signs and speeding (all residents), no license plates, and suspicious vehicles, aided "lost" visitors, and interrupted the departure of one teenager from his bedroom window in the wee hours. Once again, the deputies were "impressed" with the almost non-existent incidence of crime, nuisances and vandalism in Eden Isles during this period -- especially compared to other sub-divisions -- attributable in large part to the presence of the Guard Service as an effective deterrent. There were also many telephone complaints to the guard about excessive fireworks. January first dawned with many streets and front yards littered with the debris of neighbors' displays.

We were informed that some of the newly installed street lights were not burning; CLECO work crews report that the majority of them are out due to (1) having been "shot" out and (2) carelessness of nearby construction workers in digging for connections. Please report outages to CLECO so they can make repairs -- your tax dollars pay for these lights every month, regardless of whether or not they are burning.

Thanks once again to Ina Graff and Dolly Wortmann for helping to get out the first quarter billing. A thank you also to Windward Passage resident "MURPH" DOMINELLA for making Security Service yard signs for us this month.

B A B Y S I T T I N G

Name	Age	Address	Phone	Available
Carolyn French	18	301 Charles Ct.	645-0070	Anytime
Stephanie Gomila	13	115 Intrepid Dr.	646-0782	Everyday after 4 PM
Amy Key	15	111 Moonraker Dr.	643-8693	Weekday Evenings & Weekends
Tammie Mayeaux	16	278 Moonraker Dr.	646-2044	Weekdays after 4 PM & Weekends
Tiffany Resendez	13	109 Moonraker Dr.	641-8654	Weekday Evenings & Weekends

A WORD FROM THE NEW PROGRAMS VICE PRESIDENT

by Bill Northup



Representative Pete Schneider, III was on hand to discuss current topics of interest and happenings in Baton Rouge at the general membership meeting in January. He addressed the issues and concerns of the membership and received some valuable feedback. It was a beneficial and informative meeting for all in attendance.

meeting topics to learn more to positive proactive issues. I will try to do my part to get the best speakers that I can. Also, let's try to have some simple inexpensive neighborhood get-togethers this year, such as crawfish boils and fish fries (so we can taste some of the fine fish many of us have been catching just for fun). If you have any suggestions, crawfish or trout, let's talk.



As the new Programs Vice President, I really want to try hard to help the subdivision have a vibrant schedule of both events speakers. I would like the

program, a conservation/game fishing

program. Please let me know if you or someone you know would be willing to put on a 30 minute talk/display of something that would be of interest to the Eden Isles community.



Once again, I look forward to serving you as Programs Vice President this year.

GG PRINTING

649-4305

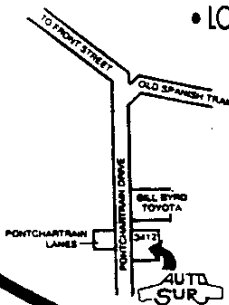
2137 First St.
Slidell, LA 70458

AUTO SUR

FORMERLY ASSURNET



AUTO • HEALTH • HOME



- LOW DOWN PAYMENT AVAILABLE • AUTO • HOME • HEALTH
- LIFE • DENTAL • MOTORCYCLES • BOATS • TRUCKS
- MOBILE HOMES • FIRE • BUSINESS
- SR22'S FILED IMMEDIATELY
- AUTO TITLE TRANSFER
- DISCOUNTS FOR GOOD DRIVERS
- CONVENIENT MONTHLY PAYMENTS

See Mike Sims,
your AutoSur agent

CALL US

649-2886

- OFFICE HOURS -
MON - FRI 9 AM - 6 PM
SATURDAY 10 AM - 2 PM

3412 PONTCHARTRAIN DR.

GARDEN CLUB

NEWS

by Marilyn Cazauban



The annual Christmas meeting of the Garden Club was held at the lovely home of Nell Forstall. After a short business meeting, each member donated five dollars for charity. Names of local charities were placed in a basket for a drawing. The winner of the Christmas Gift this year was the Kidney Foundation. Much better than exchanging meaningless gifts with each other--truly the spirit of Christmas.

Santa by Boat was extremely well attended. Each child had the opportunity to speak with Santa and receive a small handmade gift. Refreshments were served by the ladies of the Club. I'm sure that December 19 was a day to remember for our little ones.

On December 20, 1993, the judging committee undertook a most difficult task--that of picking out the best decorated homes in the neighborhood. Did you have the opportunity to see all of the beautiful decorations this year? Each year it gets better and brighter. Since everyone could not win, the committee

selected the following residents:

FIRST PLACE

Jacob and Gertrude Elders of 210 Eden Isles Drive

SECOND PLACE

Daniel and Marcella Bagourel of 128 Pebble Beach

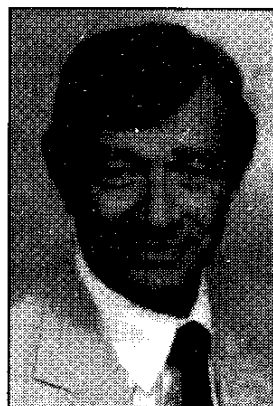
THIRD PLACE

Frank Fradella of 100 Sirius Lane

So many homes were in contention. Honorable mention goes to Lawrence and Pat McKnight at 105 Darcey Lane; James and Martha Leach at 101 Gretel Cove; Ken and Argie Leach at 200 Chubasco Lane and Craig and Ruth Barratini of 225 Intrepid.

The January meeting of the Club was held at the home of Pam White on Gretel Cove. Co-hostess for the meeting was Georgene Haydel. A beautiful arrangement, entitled "Happy New Year", was created and displayed by four Club members.

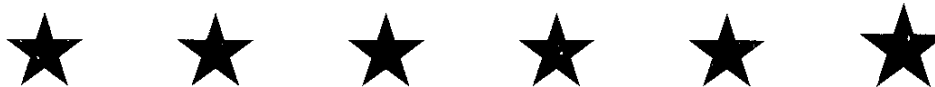
Happy New Year everyone! Lets hope that 1994 provides us with as many blessings as 1993.



Walter J. Segrave, Jr.
Registered Representative
for NYLIFE Securities, Inc.

SERVING EDEN ISLES AND BEYOND

LIFE • HEALTH • ANNUITIES • IRA'S • MUTUAL FUNDS
ESTATE PLANNING • RETIREMENT PLANS • BUSINESS INSURANCE



NEW YORK LIFE

THE COMPANY YOU KEEP
SINCE 1845

**NEW YORK LIFE
INSURANCE COMPANY**

639 LOYOLA AVE.
SUITE 1900
NEW ORLEANS, LA 70113
(504) 569-0500

LOCALLY
112 RAMPAGE LOOP
SLIDELL, LA 70458
(504) 847-0923



DON'T READ THIS...

...unless you care about your property

by Beth Kobeszko



The past year was another period of rapid growth for Eden Isles. About a hundred families moved into newly constructed homes. Because of that, the number of residences rose to 915. The resell market was also doing well. According to information from Multiple Listing Service, 52 homes were sold last year with an average sales price of \$128,558. The prices ranged from a low of \$88,000 to a high of \$292,500. The average market time was 69 days. Right now there are 13 homes for sale in our subdivision ranging in price from \$119,500 to \$550,000. The above

statistics do not include "For Sale By Owner" properties and new constructions. Figures presented herein are not guaranteed, but are secured from sources I believe to be authoritative.



Will 1994 be another good year for Eden Isles? Only time will

tell. There are many things that we can do which, with everyone's participation, would raise the attractiveness of our community. Even though both security and the appearance of the common grounds have improved lately, there is still much to be done.

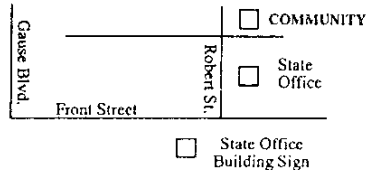
A few extra dollars spent on these purposes will definitely be a worthwhile investment that will raise the value of our homes. It is in the best interests of all of us. Support the efforts of the HOMEBOWNERS' ASSOCIATION and it's agencies, GREENFORCE and SECURITY.

COMMUNITY FEED & GARDEN, INC.

2320 Carey Street
(Across from the State Office Building)

643-5327

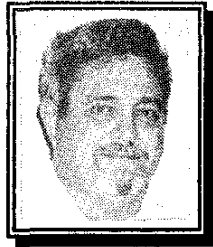
Mike and Rosalie Bruce
Owners



FERTILIZER • ANIMAL FEEDS • BEDDING PLANTS
LAWN & GARDEN SUPPLIES • PET SUPPLIES
AND MUCH MORE!

FAREWELL? NO, HELLO AGAIN!

by Sid Menard
Past President



Gee, aren't you lucky. You have a much prettier face to greet you this issue. The past three years as your President have been very rewarding to me: definitely not monetarily, but in personal satisfaction of doing the best that I could do. I really looked forward to another year as President during my last year of eligibility on the Board of Directors.

However, the chair of the Security Committee was more important to me. I'll stay on the Board as Treasurer, and be around to assist our new President whenever she needs it. However, with her credentials, I doubt I'll be needed very much.

It is my objective this year to

computerize the Treasury and the informational database of the subdivision. If we can acquire a computer for the association, the data and programs can be passed on to the future Treasurers. So, in effect, I've taken on more work than I had before.

I would like to thank those people who served on the Board of Directors with me, and you fine people who responded to the suggestions that I made the past three years. Without your help my term as President would not have been the success that it was.

So, I'm not bidding you farewell; I'm saying hello to a new and more important challenge.

MEMBERSHIP SCOREBOARD

As of Dec. 31, 1993 membership stood at a record 411 families. This includes 239 who have paid for 1994, and 172 who have not yet renewed from 1993.

GREENFORCE contributors are at 155 paid for 1994, and 92 who have not renewed their donation from 1993, for a total of 247.



The most disheartening statistic is that **399 families** in this subdivision **give nothing at all**. We hope that they would reconsider their positions, and overlook their pet grievances which cause them not to take part in the improvement of their property values.

24-hour Service
566-4105
28 Years of Experience



We Service All
Makes and Models

Commercial

AIRCO

AIR CONDITIONING • HEATING • INC.

Residential

Home Phone 646-0602
Roy Bellinger Jerry Boudreaux

1994-1995

EDEN ISLES HOMEOWNERS' ASSOC.

February 1994

S	M	T	W	T	F	S
		1	2	3	4	5
6	7	8	9	10	11	12
13	14	15	16	17	18	19
20	21	22	23	24	25	26
27	28					

March 1994

S	M	T	W	T	F	S
		1	2	3	4	5
6	7	8	9	10	11	12
13	14	15	16	17	18	19
20	21	22	23	24	25	26
27	28	29	30	31		

April 1994

S	M	T	W	T	F	S
					1	2
3	4	5	6	7	8	9
10	11	12	13	14	15	16
17	18	19	20	21	22	23
24	25	26	27	28	29	30

May 1994

S	M	T	W	T	F	S
1	2	3	4	5	6	7
8	9	10	11	12	13	14
15	16	17	18	19	20	21
22	23	24	25	26	27	28
29	30	31				

June 1994

S	M	T	W	T	F	S
		1	2	3	4	
5	6	7	8	9	10	11
12	13	14	15	16	17	18
19	20	21	22	23	24	25
26	27	28	29	30		

July 1994

S	M	T	W	T	F	S
					1	2
3	4	5	6	7	8	9
10	11	12	13	14	15	16
17	18	19	20	21	22	23
24	25	26	27	28	29	30
31						

February

- 2 Groundhog Day
- 5 **KREWE OF THE BILGE PARADE - 12 Noon**
- 6 KREWE OF DIONYSUS PARADE - 1:00 PM
- 10 EIHOA Board of Directors Meeting 7:30 pm
- 12 *Lincoln's Birthday*
- 13 KREWE OF FLORA PARADE - 1:00 PM
- 14 *Valentine's Day*
- 15 **MARDI GRAS**
- 16 *Ash Wednesday*
- 17 St. Tammany Police Jury Meeting - 4:00 pm
- 21 *President's Day*
- 22 *Washington's Birthday*

March

- 10 EIHOA Board of Directors Meeting - 7:30 pm
- 12 POPE JOHN PAUL II H.S. CRAFT SHOW & FOOD FEST
- 13 POPE JOHN PAUL II H.S. CRAFT SHOW & FOOD FEST
- 17 St. Tammany Police Jury Meeting - 4:00 pm
- St. Patrick's*
- 20 *Spring begins*
- 27 *Palm Sunday*
- 29 **EIHOA General Membership Meeting -- TYC at 7:00 pm**

April

- 1 *April Fools Day*
- Good Friday*
- 3 *Daylight Savings--set ahead 1 hour*
- Easter*
- 27 *Passover*

May

- 5 *Cinco de Mayo*
- 8 *Mother's Day*
- 12 *Ascension Day*
- 21 *Armed Forces Day*
- 22 *Pentecost*
- 30 *Memorial Day (Observed)*
- 31 **EIHOA General Membership Meeting -- TYC at 7:00 pm**

June

- 2 *Corpus Christi*
- 14 *Flag Day*
- 19 *Father's Day*
- 21 *Summer begins*

July

- 4 *Independence Day*
- 26 **EIHOA General Membership Meeting - TYC at 7:00 pm**

September

- 5 *Labor Day*

August 1994

S	M	T	W	T	F	S
	1	2	3	4	5	6
7	8	9	10	11	12	13
14	15	16	17	18	19	20
21	22	23	24	25	26	27
28	29	30	31			

September 1994

S	M	T	W	T	F	S
				1	2	3
4	5	6	7	8	9	10
11	12	13	14	15	16	17
18	19	20	21	22	23	24
25	26	27	28	29	30	

October 1994

S	M	T	W	T	F	S
						1
2	3	4	5	6	7	8
9	10	11	12	13	14	15
16	17	18	19	20	21	22
23	24	25	26	27	28	29
30	31					

November 1994

S	M	T	W	T	F	S
		1	2	3	4	5
6	7	8	9	10	11	12
13	14	15	16	17	18	19
20	21	22	23	24	25	26
27	28	29	30			

December 1994

S	M	T	W	T	F	S
				1	2	3
4	5	6	7	8	9	10
11	12	13	14	15	16	17
18	19	20	21	22	23	24
25	26	27	28	29	30	31

January 1995

S	M	T	W	T	F	S
1	2	3	4	5	6	7
8	9	10	11	12	13	14
15	16	17	18	19	20	21
22	23	24	25	26	27	28
29	30	31				

Eden Isles Homeowners Association

Emergency and Important Phone Numbers and Addresses

Emergency.....911 **Sheriff.....646-4100** **Fire Department.....643-4242**
Poison Control Center.....1-800-960-7283 **LA State Police.....646-4075**
Emergency One Ambulance.....643-3563 **Priority One Ambulance.....643-0066**
Eden Isles Guardhouse.....641-8690 **Sheriff's Water Patrol.....646-4100**

Homeowners Association Officers

President	Deborah Willoughby	Blackfin Cove	649-4210
Senior Vice President	Walter J. Seagrave	Rampage Loop	847-0923
Fund Raising Vice Pres	Tammy Austin	Weatherly Cove	641-6244
Programs Vice President	William E. Northup	Blackfin Cove	646-1314
Secretary	Marilyn Cazauban	Chubasco Lane	641-9325
Treasurer	G. Sidney Menard	Eden Isles Blvd	649-3555
Director	Henrik Eike	Charles Court	649-0296
Director	Robert E. Nelson	Moonraker Drive	649-1230
Director	Anthony Accardo	Eden Isles Blvd	646-1970

Association Committee Chairpersons

Security Committee	G. Sidney Menard	Eden Isles Blvd	649-3555
GREENFORCE Committee	Pam White	Gretel Cove	649-7214
Vacant Lot Grasscutting	Pat Murphy	Pebble Beach Drive	643-8030
Co-Chair	Nell Forstal	Carina Circle	641-2232
Welcoming Committee	Elizabeth Kobeszko	Pebble Beach Drive	641-4869
Membership Committee	G. Sidney Menard	Eden Isles Blvd	649-3555
Eden Islander Newsletter	Annemarie Furphy	Blackfin Cove	641-9138
Rodeo/Poker Run Committee	Cathy Drolla	Pebble Beach Drive	649-7046

Utilities, Agencies, and Other Interests

Architectural Control			
Units 3 & 4 Secretary	Pam White	Gretel Cove	649-7214
Cleco Electric	Normal Business	154 Florida Avenue, 70458	643-5555
	Emergency		1-800-622-6537
Coast Waterworks	Normal Business	378 Lakeview Drive, 70458	641-7932
	Emergency		641-7080
Cablevision Industries	Customer Service	37356 Ben Thomas Rd, 70460	641-9251
Eden Isles Garden Club	Dianne Saucier	Rampage Loop	649-1138
Slidell Picayune Reporter	Marilyn Cazauban	Chubasco Lane	641-9325
State Of Louisiana	Maintenance	Hwy 11 Traffic Light	1-800-545-9280
St. Tammany Parish Sheriff	Animal Control	Dep. Kenny Baham	646-4075 ext 323
Tammany Yacht Club	Manager	John Sewell	649-5222
U.S.C.G. Auxilary Flotilla 4-8	Brad Carey	Moonraker Drive	649-6884
Wild Life & Fisheries	Alligator Sightings	Howard Mc Crea	641-3867

Elected Officials

U.S. Senators	John B. Breaux	501 Magazine St. N.O.L.A.	589-2531
	J. Bennett Johnston, Jr.	501 Magazine St. N.O.L.A.	589-2427
U.S. Representative	Bob Livingston	2055 Second St. Slidell, 70458	643-7733
State Senator	Gerald Hinton	2549 Carey St. Slidell 70458	643-4601
State Representative	Pete Schneider	P.O. Box 400, Slidell 70459	863-3642
Police Juror	Gary Rinck	1508 Gause Blvd. Slidell, 70458	649-7100

The Eden Isles Homeowners, Association wishes to welcome the following residents and their families who have recently moved into our community:

WELCOME

- Gilberto Arguelles
- Chuck Busch
- Vick Corso
- Mark Enright
- David Frentz
- Richard Hunt
- Emile Gauchet
- Mahley Larmey
- Donald Lindemann
- Virgil Martin
- Cheryl Minnery
- Randy Paternostro
- William Robinson
- Arland Ruiz
- Denis Schaff
- Karl Scheuermann, Jr.
- Francis Seagrave
- Mark Shirley
- Frank Tucker
- Alvin Vogel

WELCOMING COMMITTEE REPORT

by Beth Kobeszko



Last year was a very busy time for the WELCOMING COMMITTEE. In 1993 we welcomed about 175 families into Eden Isles. A few were residents who moved from one Eden Isles home to another, but the majority were newcomers.



The most families -- 36 -- moved to Moonraker Drive. Other "busy" streets were: Pebble Beach Drive with 20 newcomers; Eden Isles Drive with 17; Windward Passage with 12; Blackfin Cove with 10; and Intrepid Drive and Charles Court with 9 each. All this added up to a lot of visits, some of which turned into rather long chats. Thank you all for the pleasant receptions. We would also appreciate any comments that would help us improve our service.

I would especially like to thank everyone who volunteered to collect materials, prepare welcoming bags, and welcome newcomers. Your help makes a big difference.

Happy New Year

CUSTOM CURB, INC

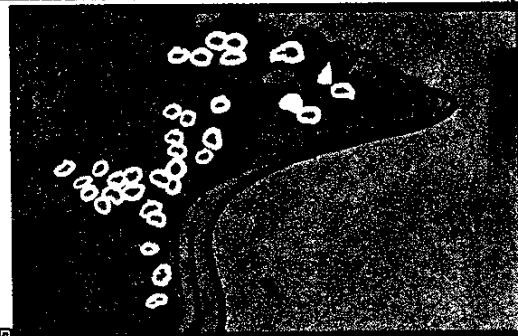
FIRST IN LANDSCAPE BORDERS
CONTINUOUS CONCRETE LANDSCAPE BORDERS

RESIDENTIAL COMMERCIAL
MULTI - COLORS AVAILABLE

Saves Hours Of Edging,
Trimming And Weeding Time

FREE
ESTIMATES

624-8910



BB8894X

THE EDEN ISLES SPECIALIST

BETH KOBESZKO

WHETHER YOU'RE LOOKING FOR A HOME TO BUY OR PLANING TO
SELL YOUR PRESENT ONE, YOU DESERVE THE HELP OF A TRAINED
AND DEDICATED REAL ESTATE PROFESSIONAL LIKE MYSELF.



CALL ME TODAY FOR YOUR FREE
MARKET VALUE ANALYSIS

641-4869 OR **641-1000 ext. 261**

**LATTER
& BLUM**
INC/REALTORS®



PICK THE BEST. I'LL DO THE REST.

THE EDEN ISLES HOMEOWNERS' ASSOCIATION
P.O. Box 2746
Slidell, Louisiana 70459

BULK RATE
U. S. POSTAGE
PAID
PERMIT #63
SLIDELL, LA



**HAPPY
NEW YEAR**