



# The Eden Islander

THE OFFICIAL "EDEN ISLES NEWSLETTER"

EDEN ISLES SPRING 2014

P.O. BOX 2746 • SLIDELL, LA 70459

## 1ST QUARTER 2014

### GENERAL MEMBERSHIP MEETING

Tuesday, March 11, 2014  
7:00 PM • Tammany Yacht Club

#### AGENDA:

#### REPORT

**East St. Tammany  
Storm Protection Committee**

#### FEATURED SPEAKER

**Dr. Pat Fitzpatrick, PhD  
Meteorology**

- Recognized expert in hurricane structure, intensity and modeling of storm surge
- Resident of Lakeview Drive

#### **NEW/OLD ASSOCIATION BUSINESS**

#### ADVERTISING RATES

1/8 PAGE	\$40.00
1/4 PAGE	\$60.00
1/2 PAGE	\$100.00
BACK COVER	\$200.00

Sharon Jenkins Smith - Editor  
985-288-5095 • [sjsmith511@aol.com](mailto:sjsmith511@aol.com)

*Presenting...*

*OUR VERY OWN  
DR. JEKYLL and MR. HYDE*

## THE WATERS

*of*

# LAKE PONTCHARTRAIN

*Please read on...*

Join the Homeowner's Association to **Keep Eden Isles Waterfront Living "the" Best!**

**VISIT [WWW.EIHOA.ORG](http://WWW.EIHOA.ORG)**

[www.facebook.com/EdenIslesHomeownersAssociation](http://www.facebook.com/EdenIslesHomeownersAssociation)

# President's Message

Part 1

***All of us who live in Eden Isles, and in our neighboring waterfront communities, live within reach of the true joy of our lifestyles, which also happens to loom as the true threat to our economic well-being and personal futures,.....***

**LAKE PONTCHARTRAIN!!!**



***The simple truth is that, if we, along with our neighboring waterfront communities, do not take the initiative to our governmental agencies, and put storm solutions in place for our area, we have no one else to blame but ourselves.***



# President's Message

## Part 2



*The Eden Isles Homeowners Association (EIHOA) has now spawned, and continues to fully support, what has become recognized by Parish and State officials, as the*

*“East St. Tammany Storm Protection Committee.”*

*This committee consists of interested homeowners from Eden Isles, Moonraker and Lakeview Drive. As a group, they are experienced in the fields of civil, mechanical and electrical engineering, storm surge modeling and forecasting, project management, and also possess a wealth of historical knowledge of storm threat behaviors and recent mitigation efforts on the South Shore. The Committee intends to expand its representation by inviting future participation from the Clipper Estates and Oak Harbor community organizations.*



*(continued)...*

# President's Message

## Part 3

*The development of an overall strategy and action plan for the Committee has already begun. The strategy is founded in the VISION that, within five years, solutions will be in place that will essentially mitigate severe flooding in our area against the 100-year storm threat. The Committee has just learned that our Parish and State officials are also working together, crafting State legislation that, if approved, would provide the North Shore with its own levee board. The Committee totally agrees that this is essential to securing funding for project engineering and construction.*



*The EIHOA and the new Committee will look forward to the full support of all Eden Isles homeowners, as well as those in our neighboring waterfront communities. The time will present itself that will call for a consolidated, citizen coalition of support for these efforts. With the Committee's leadership, and representation of our interests, we will pursue the support of our elected officials and governmental agencies. They will ultimately make the decisions that will enable the construction of the flood threat solutions. The 7000+ residents of our collective waterfront communities are depending on everyone's unified support.*

# *President's Message*

## *Part 4*

***Therefore, during this coming year, in addition to our longstanding event sponsorship and service to the Eden Isles community, the centerpieces of the EIHOA's efforts will be: improved storm threat protection; and the long term stabilization of National Flood Insurance rates, at reasonable levels.***



***Please lend your support NOW by not only belonging to the Association, but also by attending the next General Membership meeting on Tuesday, March 11<sup>th</sup>, at 7 PM. The focus of that meeting will be a***

- Presentation and progress report from the East St. Tammany Storm Protection Committee, including,***
- Remarks from our own resident storm expert, meteorologist and member of the Committee, Dr. Pat Fitzpatrick, PhD, as well as,***
- Solicitation of ideas and concerns from the members present.***

***Here's hoping you and families have a wonderful Mardi Gras season, and a safe, healthy and prosperous 2014.***

***Lou Sandoz - 2014 EIHOA President***



**FINANCIAL REPORT**  
**JANUARY 1, 2014 THRU FEBRUARY 28, 2014**

**INFLOW**

\$ 9,550	Rec'd in dues
\$ 796	Rec'd from IESI, as a contribution, for community beautification
\$ 6,000	Transferred from savings to cover cash flow shortage
\$ 100	Ads for newsletter
<b>\$ 16,446</b>	<b>Total Inflow</b>

**OUTFLOW**

\$ 4,770	Greenspace (Grass cutting, etc.)
\$ 1,535	Membership flags
\$ 644	Custom Mailer
\$ 500	Deposit for 2014 North Shore Beach Luau
\$ 448	Security Cameras
\$ 188	Mini storage rental & shelving
\$ 112	Utilities
\$ 100	Community Garage Sale
\$ 14	Service charge
<b>\$ 8,311</b>	<b>Total Outflow</b>

**SUMMARY**

\$ 3,315	Carried over from 2013
\$ 16,546	Income
\$ (8,311)	Expenses
<b>\$ 11,550</b>	<b>Checking Balance</b>

**2014 - CLENDAR OF EVENTS**

*ST. PATRICK'S DAY BOAT PARADE - TBD*

*CRAWFISH BOIL - MAY 3, 2014 2-6PM @ TALOOLAH'S*

*SPRING GARAGE, ESTATE, AND YARD SALE - APRIL 26, 2014 7AM - 1PM*

*LUAU - AUGUST 9, 2014 7-11PM @ NORTHSORE BEACH FIRE HOUSE*

*2ND ANNUAL END OF SUMMER CHILDREN'S EVENT - TBD*

*NIGHT OUT AGAINST CRIME - TBD*

*FALL GARAGE, ESTATE, AND YARD SALE - TBD*

*EIHOA ANNUAL CHRISTMAS PARTY & GENERAL MEMBERSHIP MEETING - TBD*

*ANNUAL CHRISTMAS BOAT PARADE - DECEMBER 20, 2014 7PM EDEN ISLES CANALS*





# EDEN ISLES HOMEOWNERS ASSOCIATION GENERAL MEMBERSHIP MEETING • DECEMBER 10, 2013



## Meeting Minutes

December 10, 2013

### GENERAL MEMBERSHIP MEETING

The meeting was called to order by President, Raymond Frey at 7:15 p.m.

1. The membership said the Pledge of Allegiance.
2. A motion is made, seconded and approved to accept the September general membership meeting minutes as published in the December newsletter. (Exhibit B)
3. Ken Lanata gives the Treasurer's Report for 2014. A motion is made, seconded and passed to accept the Report. (Exhibit A)
4. Sharon Smith advises that the next newsletter will be March 2014 and requests article suggestions from the residents by February 15<sup>th</sup>.
5. Lou Sandoz advises that the Architectural Committee is working on some new procedures for 2014. More information to follow. The membership is reminded that there is an attorney of record on behalf of the EIHOA to begin to draft new policies and help with enforcements.
6. Paul and Lucey Titus are recognized for their work with Code Enforcement.
7. The Flood Protection Committee is recognized.
8. Cindy F. advises that the Sheriff's Office has requested tape from the security cameras on two incidents:
  - a. Thanksgiving night – 15 hours requested
  - b. Missing person coming from Highway 11, possibly took Eden Isles Blvd.
9. Acknowledgements of outgoing Board members are made.
10. The Board parade will be December 21 beginning at 7p.m. It will start from the Yacht Club but boats are welcome to join at any point.
11. Cindy F. introduces the nominees for the 2014 Board:
  - a. Catherine Hammel – 125 Intrepid; works for Social Security; moved here 3 years ago;
  - b. Kenneth McDow – 113 Blackfin Cove; moved here from Gretna in 2006;  
[kmcdow@supremeauto.net](mailto:kmcdow@supremeauto.net); 504-289-8974
  - c. DeWayne Smith – 334 Eden Isles Blvd.; retired Army; [smithdew1962@hotmail.com](mailto:smithdew1962@hotmail.com); 785-320-0415.
12. There are no nominations from the floor. Ballets are passed out and then collected. It was a unanimous vote for the 3 nominees. The Board positions will be determined at the January Board meeting.
13. A resident advises of a dead tree on Valliant Lane. EIHOA will have it removed. The resident is advised to speak to Paul Titus.
14. 50/50 was awarded. \$75 to resident; \$75 to EIHOA.
15. Door prizes were awarded.

The meeting was adjourned at 8:02 p.m. for the Christmas Party.





**Eden Isles Homeowners Association**  
**Flood Committee**  
***Now Operating Under New Name and New Directions***

Over the last eight years a small group of individuals, living within the Eden Isles community, have been studying and researching various methods of achieving storm surge protection. Until recently, we had concentrated our efforts on ways of revising the Corps of Engineers' original plan to protect the entire Lake Pontchartrain Basin, by keeping surge from entering the lake rather than dealing with it after the fact.

*We still feel that a comprehensive Pontchartrain Lake basin protection plan is the most cost effective method of storm surge protection.* However, this will be a long term, federally entangled solution. *What we need now is protection in the short term.*

In order to expedite flood protection efforts for our community, we have redefined ourselves and our *VISION.* We are now recognized as the ***"East St. Tammany Storm Protection Committee."*** Our focus now is constructing *100-year storm protection* for the 7,000+ residents living in the subdivisions of ***Lakeview Drive, Clipper Estates, Moonraker Drive, Eden Isles*** and ***Oak Harbor, within the next five years.***

*As a note of interest,* everyone should know that the terminology, ***"10-year or 100-year storm" does not mean*** that storms of those intensities will occur every 10 or 100 years. The terminology actually represents a probability that a storm of that intensity will occur *in any given year.* Therefore, a 10-year storm has a **10% probability** (10/100) of occurring *in any given year.* Similarly, a storm with a 100-year intensity has a **1% chance** of occurring, *in any given year.*

Our group has begun to reach out to the other homeowner associations and professionals living within this area, to solicit their support. We have also explored several possible technical solutions for providing storm protection for all of those communities, and feel that a "ring levee", utilizing I-10, Highway 11, Lakeview Dr., and the existing Schneider canal levee, may be feasible.

We have met with state and parish officials to present our strategies and concepts, and to solicit their support to expedite a flood protection project for our community. This was quite well received. A full report on our progress, and what we learned about governmental agency progress, will be presented at the **General Membership Meeting, on Tuesday, March 11, 2014 at 7pm at *The Tammany Yacht Club.***

This is our most important community-wide issue, and we need everyone's full support and commitment to accomplish our mitigation goals. We hope you will join us at the General Membership Meeting in March to learn more about this issue and how your household can help us to develop and implement a storm protection strategy.







**2014 EIHOA**

**BOARD OF DIRECTORS ROSTER**

<b>NAME</b>	<b>eMAIL</b>	<b>PHONE</b>	<b>POSITION</b>
Lou Sandoz	<a href="mailto:louissandoz@charter.net">louissandoz@charter.net</a>	504-621-8045	Board President
Shirley Ezell-Frey	<a href="mailto:sezell@TMLS.textron.com">sezell@TMLS.textron.com</a>	504-491-6874	Board Vice President
Catherine Hammel	<a href="mailto:wuffiepuppy97@aol.com">wuffiepuppy97@aol.com</a>	504-296-8158	Board Secretary
Ken LaNata	<a href="mailto:kwlanata@bellsouth.net">kwlanata@bellsouth.net</a>	985-649-4478	Board Treasurer
DeWayne Smith	<a href="mailto:smithdew1962@hotmail.com">smithdew1962@hotmail.com</a>	785-320-0415	Board Member
Ken McDow	<a href="mailto:kmcdow@supremeauto.net">kmcdow@supremeauto.net</a>	504-289-8974	Board Member

*So Much Music... So Little Time*

*...your kind of music...played your way*

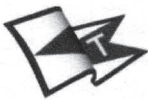
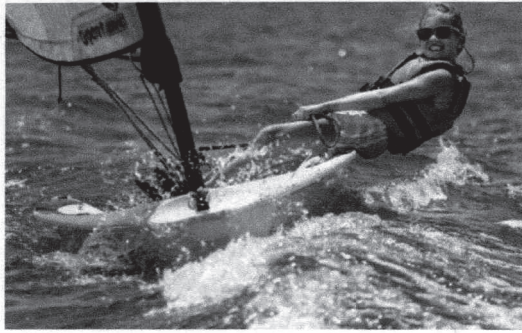
*DJ Entertainment*

Louie Sandoz

504-621-8045

[louissandoz@charter.net](mailto:louissandoz@charter.net)





## **Tammany Yacht Club - Summer Sail Camp 2014**

**Parents** – This summer, get your kids away from the Nintendo and the iPad. They can be outdoors with other kids learning safe boating skills and a fun, non-impact sport that promotes both teamwork and self-reliance. Girls participate on an equal footing with boys. See the smiles on their faces when they learn they can control a boat by themselves using only the wind, and see the boost in their self-confidence that extends into all areas of their life, including school.

**Kids** – Come get out on the water, splash around, make new friends, and learn something really different. And have FUN doing it! It's not hard, anyone can learn. By the end of the session you will be sailing your own boat, playing water tag with the other kids and racing in an end of camp regatta. (Sailboat racing is an Olympic event)

No previous boating experience is necessary. Age limits are generally from 7 to 15. Kids should be in reasonable physical condition (a medical release form is necessary), be comfortable in and around the water, and know how to swim. They should provide their own life jacket, to make sure it fits well. The club provides the boats and other gear.

**Each session is two weeks long, Monday through Friday from 9am - 4pm:**

**Session 1 - June 2nd through June 13th**

**Session 2 - June 16th through June 27th**

**Session 3 - July 7th through July 18th**

**Pricing: Child/Family Member of TYC Member: \$350 / session**

**Non-Member: \$400 / Session**

**A \$30 discount will apply to multiple sailors/sessions**

**Adult sailing lessons are offered on request – contact us for details**

Not sure? Come to Open House day at TYC, Saturday April 12 and see what all the fun is about! See our website at [www.tammanyyachtclub.org](http://www.tammanyyachtclub.org) for more information, send email to [comments@tammanyyachtclub.org](mailto:comments@tammanyyachtclub.org), or call the Club Manager at (985) 649-5222.



# EIHOA Board of Directors' Responses to Quality of Life Improvement Suggestions

In the 4th quarter 2013 edition of *The Eden Islander*, residents were asked to forward suggestions for projects HOA board's consideration for implementation that might offer improved quality of life to the residents of Eden Isles. In response to its request, the board received several interesting suggestions regarding which it would like to provide the following status updates. The board appreciates all of your input.

## 1. Planting trees in common grounds

- The board will be contacting nurseries to determine which types of trees would be best for these areas and which would also have a minimum one year survival guarantee attached to their sale. Look for updates in future newsletters and during general meetings.

## 2. Install durable benches with concrete pads underneath near school bus stops and around a focal point such as a fountain or flower bed.

- It is possible that a project of this type might be something the Parish would be willing to support financially so the board will be investigating the feasibility of this possibility and provide future updates with its findings.

## 3. Build a workout track

- It is possible the Parish might have funds available to support a project of this type, but before pursuing this project, the board must undertake an investigation of any corresponding liability the board might encounter in the event of someone being injured while using this type of amenity. Additionally, the board will need to investigate the insurance obligation that this project would require and the affordability of said insurance for the HOA.

## 4. Build a small playground for children

- Same considerations apply as with the workout track discussed in #3.

## 5. Speed Bumps

- The HOA has no authority to install speed bumps on public streets, even those located within the boundaries of Eden Isles. In the past, when the Parish has been contacted about installing speed bumps they refused sight safety studies and liability issues. Residents can try contacting the Parish Engineering Dept (Eddie Williams @ 985/898-2552) to determine if anything has changed relative to their speed bump policies.

## 6. Reduce newsletter printing/ mailing cost by allowing residents to "opt out" of receipt by mail and receive as a full color PDF via email instead.

- Not a viable option because the size of the file is prohibitive of sending via email and the covenants mandate delivery of certain HOA communications via mail.





## **OVER 50 SINGLES SOCIAL CLUB**

What a surprise it was when Santa visited the Over 50's Singles Social Club at their annual Christmas Party! The event was held Saturday, December 14, 2013 at the home of Phyne Gambino.

The club provided the catering in addition to the champagne for toasting, while DJ Lou Sandoz played some oldies and a few Jingle Bell songs to get every one in a jolly mood! Santa's attendance was provided courtesy of Terrel Ladner. This was a great party and a good time was had by all!

New members will be accepted at our next monthly meeting so please get in touch with Carol Wester at [mawmaw214@charter.net](mailto:mawmaw214@charter.net) or by phone at 985-641-6731 if you're interested!



## *Eden Isles Garden Club*

### **DECEMBER CHRISTMAS LIGHT DISPLAY WINNERS**

The Eden Isles Garden Club Yard of the Month Committee has chosen the December 2013 Christmas Decoration winners!

The First Place winners are David and Carol Weller, at 304 Eden Isles Drive. First Place winners are awarded a Gift Certificate from The Garden Spot Nursery.

Second Place winners are Billy and Valerie Peck, of 113 Chubasco Lane, and Third Place winners are Calvin and Kathleen Quatroty, whose lights you might have noticed at 212 Eden Isles Drive. Honorary Recognition is given to the all the residents of Anita Place where the entire street produced outstanding decorations too numerous to list.

Congratulations to all for their hard work, and for helping to make our neighborhood so beautiful for the Christmas season.



# *Derrek*

## **PILE DRIVING LAND & MARINE**

**985**

# **960-0982**

- Bulkheads • Boathouses • Piers •
- Elevated House Poles • Decks •

**NEW  
2013!**

**\$17,999**

**TURN KEY!**

Trailer not included

**MERCURY**

*"1 On The Water"*



**24ft Bentley**

**50 HP 4/S Merc ELPT**

**24 gal. gas, radio, CD, 25" Pontoons,  
Changing room, 9ft bimini top**

**BLUE DOT  
MARINE**

**2409 Paris Road,  
New Orleans, LA 70129  
504-277-7777**



**Fiberglass REPAIR!**

**IF YOU WANT THE BEST!**



**Progressive**

**Waste Solutions**

*Supports Eden Isles*

**YOUR HOA ASKS THAT YOU CONSIDER SUPPORTING  
PROGRESSIVE WASTE SOLUTIONS**

**985-781-3171**



# NEIGHBORHOOD ALERTS



Ever drive into our waterfront community expecting to find the serenity Eden Isles is famous for only to have that serenity obliterated by the presence of signs printed in BOLD RED LETTERING virtually screaming the phrase "NEIGHBORHOOD ALERT"? Ever wonder who put those signs there and why? In answer to your questions, those signs are placed by representatives of our Homeowners Association in response to situations impacting our neighborhood at large. Whenever events occur that our HOA board feels it is important to notify our residents about in the most timely way available, these signs are placed at our subdivision entrances.

Whenever you see these signs, the HOA board asks that you go to the [www.eiho.org](http://www.eiho.org) website at your earliest convenience where you will find specific details regarding the most recent alert. Additionally, whenever possible, details of the alert will also be posted at our new Facebook page at [www.facebook.com/EdenIslesHomeownersAssociation](http://www.facebook.com/EdenIslesHomeownersAssociation).

While our HOA continues to focus on its goals of building our membership rolls and accumulating contact information for every household within our community, this is the fastest means by which we can disseminate important information that is of a time-sensitive nature. So please help us to keep all of our neighbors better informed by passing information along to your neighbors who may not have seen the signs or checked the website. *Also, if you have not already done so, please reach out to a member of our board (contact information included in every issue of The Islander) and provide them with your contact info (home/cell phone or email address) so that in the future we can develop a more direct means of getting important information out to the entire community in the most effective and timely way possible.*

Remember, SAFETY FIRST! The EIHOA Board

It's Nice to Know Some Things Haven't Changed

Tow Boat U.S.

Trustworthy Towing **STILL ONLY \$149**

Red is ready 24/7 when you need assistance on the water. Our captains are licensed, trustworthy and all around nice guys. With over 600 boats in 300 ports, we're only a quick call away. Just show your BoatU.S. Membership card for payment on the water.

BoatU.S. Towing Services has the largest fleet nationally and locally with 7 locations in S.E. Louisiana:

Slidell • Mandeville • Shell Beach • Venice  
Lafitte • Grand Isle • Fourchon

- ▶ Battery Jumps
- ▶ Fuel Delivery
- ▶ Soft Ungroundings
- ▶ 24/7 Dispatch Service
- ▶ Over 500,000 Members
- ▶ 25 Member Benefits

FREE BoatU.S. Towing App!



Locally Call Mark Tupper or Go Online Now to Join

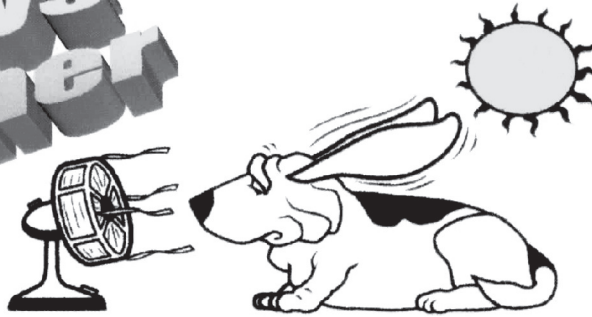
983-373-6330

[BoatUS.com/towing](http://BoatUS.com/towing)



Unlimited towing details and exclusions can be found online at [BoatU.S.com/towing](http://BoatU.S.com/towing) or by calling

**DOG DAYS  
OF SUMMER**



*Be Prepared for the* **HOT SUMMER MONTHS**

*Have Your A/C System Cleaned & Serviced to  
Keep it Running at Peak Efficiency*

**CALL TODAY FOR AN APPOINTMENT**

**985-641-9635**

**Fred's A/C & Heating Service**

*Sales – Service – Installation*

*Licensed/Insured*

**EDEN ISLES  
RESIDENTS**

**\$65<sup>00</sup>**

**SPRING  
SERVICE  
SPECIAL**

*Call for  
Details!*

**Now Open**

**Receive 10%  
off with this  
flyer!**

*Auto*

*Therapy<sub>LLC</sub>*

**Dealership Quality Service & Repairs Made Af**FORD**able!**

**\*Ford Diesel Certified Specialist!**

**EDEN ISLES**

**Free pickup & delivery  
service available for  
Eden Isles Residents!**

**Mike Pitre, Owner**

**Eden Isles Resident**

**38073 Coast Blvd.**

**Slidell, LA 70458**

**Phone: (985) 641-6060**

**Mon - Fri - (8:00 - 5:30)**

**Sat - (By Appt. Only)**







**2014 EIHOA**

**BOARD OF DIRECTORS ROSTER**

<b>NAME</b>	<b>eMAIL</b>	<b>PHONE</b>	<b>POSITION</b>
Lou Sandoz	<a href="mailto:louissandoz@charter.net">louissandoz@charter.net</a>	504-621-8045	Board President
Shirley Ezell-Frey	<a href="mailto:sezell@TMLS.textron.com">sezell@TMLS.textron.com</a>	504-491-6874	Board Vice President
Catherine Hammel	<a href="mailto:wuffiepuppy97@aol.com">wuffiepuppy97@aol.com</a>	504-296-8158	Board Secretary
Ken LaNata	<a href="mailto:kwlanata@bellsouth.net">kwlanata@bellsouth.net</a>	985-649-4478	Board Treasurer
DeWayne Smith	<a href="mailto:smithdew1962@hotmail.com">smithdew1962@hotmail.com</a>	785-320-0415	Board Member
Ken McDow	<a href="mailto:kmcdow@supremeauto.net">kmcdow@supremeauto.net</a>	504-289-8974	Board Member

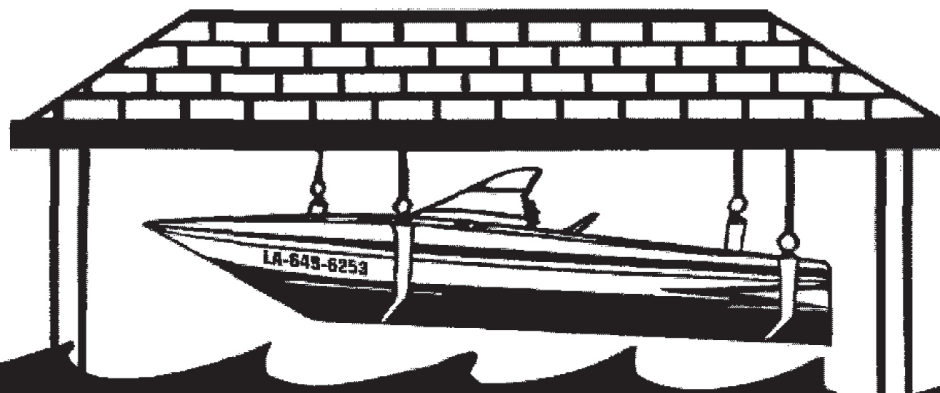
CINDY M. CONSTRUCTION, L.L.C. dba

# C & M Construction

BOAT HOISTS • BOAT HOUSES  
DOCKS & DECKS

LI  
CENSE  
D

LI  
CENSE  
D



**985-649-6253**

SLIDELL, LA

DENNIS KNECHT

NEW ORLEANS, LA



I lived in Eden Isles, been on a past homeowner's association board, and still have a vested interest in your neighborhood. I do believe it's waterfront living at its best and I will work hard at getting your home sold!

**BUYING OR SELLING???**

**LET ME SHOW YOU WHAT I CAN DO!**

**YOU WON'T BE SORRY**

Sincerely,

**Wendy Tynes, Realtor**, GRI, SRS

(504)462-0044 Cell

(985)641-1000 Office

Latter & Blum Realtors, Inc.

1400 Gause Blvd

Slidell, LA 70458

USA, Licensed with the Louisiana Real Estate Commission

wtynes@latterblum.com

Latter & Blum, ERA Powered, Independently Owned and Operated

# HONDA OF SLIDELL

510 Howze Beach Road  
Slidell, LA 70461



## HONDA



**Brian Puntila**

Vehicle Consultant

*Eden Isles Resident  
Since 1994*

Cell: 985-285-7271

Main: 985-649-9091

## BLUE DOT MARINE

SALES • SERVICE • PARTS

Bentley Encore Pontoon

MERCURY  
#1 On The Water™

SKETER  
PERFORMANCE SERIES BOATS

SEA  
CHASER

YAMAHA

EVINRUDE  
Johnson.

**277-7777**

- WATER ACCESSIBLE
- FIBERGLASS REPAIRS

2409 PARIS RD., NEW ORLEANS

WWW.BLUEDOTMARINE.NET

### Pontchartrain Ace Hardware

3320 Pontchartrain Drive

Slidell, LA 70458

Phone: (985) 643-4672

Fax: (985) 641-6051



**Dan Boudreau**  
Owner

### Pro's Pest Control Service, Inc.

Roy Provenzano, Jr.

Owner/Operator

Full Service Available

Reasonable Termite Control Rates

Residential and Commercial



147 Eden Isles Blvd.  
Slidell, La. 70458

Phone: (985) 643-7437  
Toll Free: 1-866-647-3787  
www.prospest.com



# DEEP SOUTH DIVING AND DOCK REPAIR

*ings, Bulk Head and Dock Repairs - If it is on or in the water, we can fi*



**SOONER OR LATER  
YOUR PILINGS WILL  
LOOK LIKE THIS**

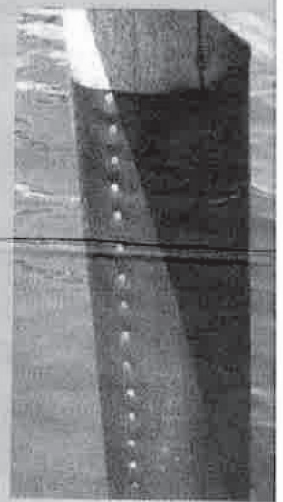


Damaged Piling

**PROTECT YOUR DOCK & YOUR  
INVESTMENT WITH OUR AFFORDABLE  
PILING PROTECTION SYSTEM. WE ALSO  
REPAIR, PROTECT & REINFORCE BULK  
HEADS TO KEEP YOUR YARD FROM  
SINKING AND ERODING AWAY .**



Severe Damage Piling Encapsulation



Protective Pile Wrap



**Piling Protection:** Stop wood burrowing worms and gribble bugs from damaging your dock pilings and bulk heads with our piling wrap system.

On new docks, prevent the problem before it starts.



**ing Repair System:** We can prevent further damage and repair it back to normal.



**LOCALLY OWNED AND OPERATED. CALL FOR A FREE ESTIMATE**

Find us on  
**facebook**

**985-774-5788 AL JOHNS**

## **COMMENTS / SUGESTIONS:**

---

### **What Your Dues Accomplish.....**

- Your financial support and participation allows your Eden Isles Homeowners Association to better help you protect and enhance one of your single most important investments, your home!
- It also provides representation to governmental agencies, at all levels, on behalf of the 1,200 households, and approximately 7,000 residents who call Eden Isles home.

### **Some Facts.....**

- Membership is open to all property owners, residents and those wishing to support our community.
- Those who fail to pay dues hinder the HOA's ability to effectively maintain the neighborhood. The more homeowners that participate, the more your association can accomplish. Please talk to your neighbors, and encourage any, who do not participate, to do so.
- Board and committee members are non-compensated neighborhood volunteers, whose only interest is contributing to the well-being of the neighborhood. Please consider volunteering some of your time and expertise. *Simply contact a Board or committee member, to get involved.*
- The parish does not maintain or fund the maintenance of the public spaces of our neighborhood, your homeowners association does!

### **Use of Funds....**

Proceeds from your dues are used for:

- ✓ Cost of repairs and telecommunications utilities associated with our security systems and cameras;
- ✓ Costs of providing neighborhood alerts and publications (Eden Islander Newsletter/security alerts/posters, etc.);
- ✓ Replacement, installation and maintenance of street signs;
- ✓ Neighborhood lighting;
- ✓ Water quality testing and lab analysis expenses;
- ✓ Insurance, legal, accounting and governmental fees / Postage for publications;
- ✓ Quarterly member meeting expenses;
- ✓ Funding for neighborhood events (Night Out Against Crime, Garage Sale, etc.);
- ✓ Providing and maintaining seasonal decorations for both main entrances;
- ✓ Planting and maintaining the community landscaping, including tree maintenance and beautification; and,
- ✓ Grounds maintenance for all of the public green spaces throughout the neighborhood.
- ✓ **NOTE – Accounting reports for the sources and uses of funds are distributed at each of the Quarterly Meetings**

**Questions / Other Comments:** Please visit [www.eiho.org](http://www.eiho.org). You can send an e-mail from the link on the home page, or call one of the board members listed under contacts. We thank you for choosing Eden Isles as your home and helping to make a great place to live for everyone. ***All of us thank you for your support!***

# EDEN ISLES HOMEOWNERS ASSOCIATION

2014

*"Waterfront living at its best"*

***NOTE: Annual dues \$120.00, due by March 31<sup>st</sup> each year....Thank YOU!!!!***

Homeowners Name/s: \_\_\_\_\_

Property Address: \_\_\_\_\_ Slidell, LA 70458

Mailing if different: \_\_\_\_\_

Home phone: \_\_\_\_\_ Cell phone: \_\_\_\_\_

E-mail address: \_\_\_\_\_

Do you wish your number listed in the directory – YES / NO      If YES, please circle    HOME or CELL  
(For security reasons, we recommend listing your phone number so your neighbors can contact you if they see suspicious activity)

Would you like to serve on the board of Directors or on a committee – YES / NO

***Please mail your annual dues and information to:*** EIHOA P.O. Box 2746 Slidell, LA 70459

***(OR)***

***Place in EIHOA Drop Box:*** Located on Eden Isle Dr. median at the I-10 entrance side

***Thank you for your continued support!!!***

.....

## **PETITION FOR SHOW OF COMMUNITY-WIDE SUPPORT!!!!!!**

**ALL OF US IN EDEN ISLES SHARE THE THREAT OF FLOODING FROM  
LAKE PONTCHARTRAIN**

**PLEASE SIGN THIS PETITION AND MAIL IT IN  
HELP SHOW OUR TOTAL COMMUNITY SUPPORT TO GOVERNMENTAL  
AGENCIES AND OFFICIALS  
FOR OUR COLLECTIVE EFFORTS FOR FLOOD PROTECTION AND FLOOD  
INSURANCE RATE CONTROL**

**Name:** \_\_\_\_\_ **Date:** \_\_\_\_\_



**FINANCIAL REPORT**  
**JANUARY 1, 2014 THRU FEBRUARY 28, 2014**

**INFLOW**

\$ 9,550	Rec'd in dues
\$ 796	Rec'd from IESI, as a contribution, for community beautification
\$ 6,000	Transferred from savings to cover cash flow shortage
\$ 100	Ads for newsletter
<b>\$ 16,446</b>	<b>Total Inflow</b>

**OUTFLOW**

\$ 4,770	Greenspace (Grass cutting, etc.)
\$ 1,535	Membership flags
\$ 644	Custom Mailer
\$ 500	Deposit for 2014 North Shore Beach Luau
\$ 448	Security Cameras
\$ 188	Mini storage rental & shelving
\$ 112	Utilities
\$ 100	Community Garage Sale
\$ 14	Service charge
<b>\$ 8,311</b>	<b>Total Outflow</b>

**SUMMARY**

\$ 3,315	Carried over from 2013
\$ 16,546	Income
\$ (8,311)	Expenses
<b>\$ 11,550</b>	<b>Checking Balance</b>

**2014 - CLENDAR OF EVENTS**

*ST. PATRICK'S DAY BOAT PARADE - TBD*

*CRAWFISH BOIL - MAY 3, 2014 2-6PM @ TALOOLAH'S*

*SPRING GARAGE, ESTATE, AND YARD SALE - APRIL 26, 2014 7AM - 1PM*

*LUAU - AUGUST 9, 2014 7-11PM @ NORTHSORE BEACH FIRE HOUSE*

*2ND ANNUAL END OF SUMMER CHILDREN'S EVENT - TBD*

*NIGHT OUT AGAINST CRIME - TBD*

*FALL GARAGE, ESTATE, AND YARD SALE - TBD*

*EIHOA ANNUAL CHRISTMAS PARTY & GENERAL MEMBERSHIP MEETING - TBD*

*ANNUAL CHRISTMAS BOAT PARADE - DECEMBER 20, 2014 7PM EDEN ISLES CANALS*





**Eden Isles Homeowners Association**  
**Flood Committee**  
***Now Operating Under New Name and New Directions***

Over the last eight years a small group of individuals, living within the Eden Isles community, have been studying and researching various methods of achieving storm surge protection. Until recently, we had concentrated our efforts on ways of revising the Corps of Engineers' original plan to protect the entire Lake Pontchartrain Basin, by keeping surge from entering the lake rather than dealing with it after the fact.

*We still feel that a comprehensive Pontchartrain Lake basin protection plan is the most cost effective method of storm surge protection.* However, this will be a long term, federally entangled solution. *What we need now is protection in the short term.*

In order to expedite flood protection efforts for our community, we have redefined ourselves and our *VISION.* We are now recognized as the ***“East St. Tammany Storm Protection Committee.”*** Our focus now is constructing *100-year storm protection* for the 7,000+ residents living in the subdivisions of ***Lakeview Drive, Clipper Estates, Moonraker Drive, Eden Isles*** and ***Oak Harbor, within the next five years.***

*As a note of interest,* everyone should know that the terminology, ***“10-year or 100-year storm”*** *does not mean* that storms of those intensities will occur every 10 or 100 years. The terminology actually represents a probability that a storm of that intensity will occur *in any given year.* Therefore, a 10-year storm has a **10% probability** (10/100) of occurring *in any given year.* Similarly, a storm with a 100-year intensity has a **1% chance** of occurring, *in any given year.*

Our group has begun to reach out to the other homeowner associations and professionals living within this area, to solicit their support. We have also explored several possible technical solutions for providing storm protection for all of those communities, and feel that a “ring levee”, utilizing I-10, Highway 11, Lakeview Dr., and the existing Schneider canal levee, may be feasible.

We have met with state and parish officials to present our strategies and concepts, and to solicit their support to expedite a flood protection project for our community. This was quite well received. A full report on our progress, and what we learned about governmental agency progress, will be presented at the **General Membership Meeting, on Tuesday, March 11, 2014 at 7pm at *The Tammany Yacht Club.***

This is our most important community-wide issue, and we need everyone's full support and commitment to accomplish our mitigation goals. We hope you will join us at the General Membership Meeting in March to learn more about this issue and how your household can help us to develop and implement a storm protection strategy.





**Cathy Drolla**  
REALTOR  
985-290-1313

EDEN ISLES  
RESIDENT  
SINCE 1986

Finding a good real estate agent can be like finding a needle in a haystack.



**Beth Kobeszko**  
Broker/Owner  
985-774-3272

EDEN ISLES  
RESIDENT  
SINCE 1992

Need One? Call us

**985-290-1313**

**985-774-3272**

**ABEK** 646-2111  
*real estate*

**Eden Isles Homeowner's Association**  
P.O.Box 2746  
Slidell, LA 70459

PRSR STD  
U.S. POSTAGE  
PAID  
CUSTOM MAILER