

**Legend**

- Primary Roads
- Planning Unit Boundary
- Authorized Levee
- Bonnet Carre Spillway
- Weir Alignment 1
- Weir Alignment 2
- New Levees & Existing Levee Modifications

N

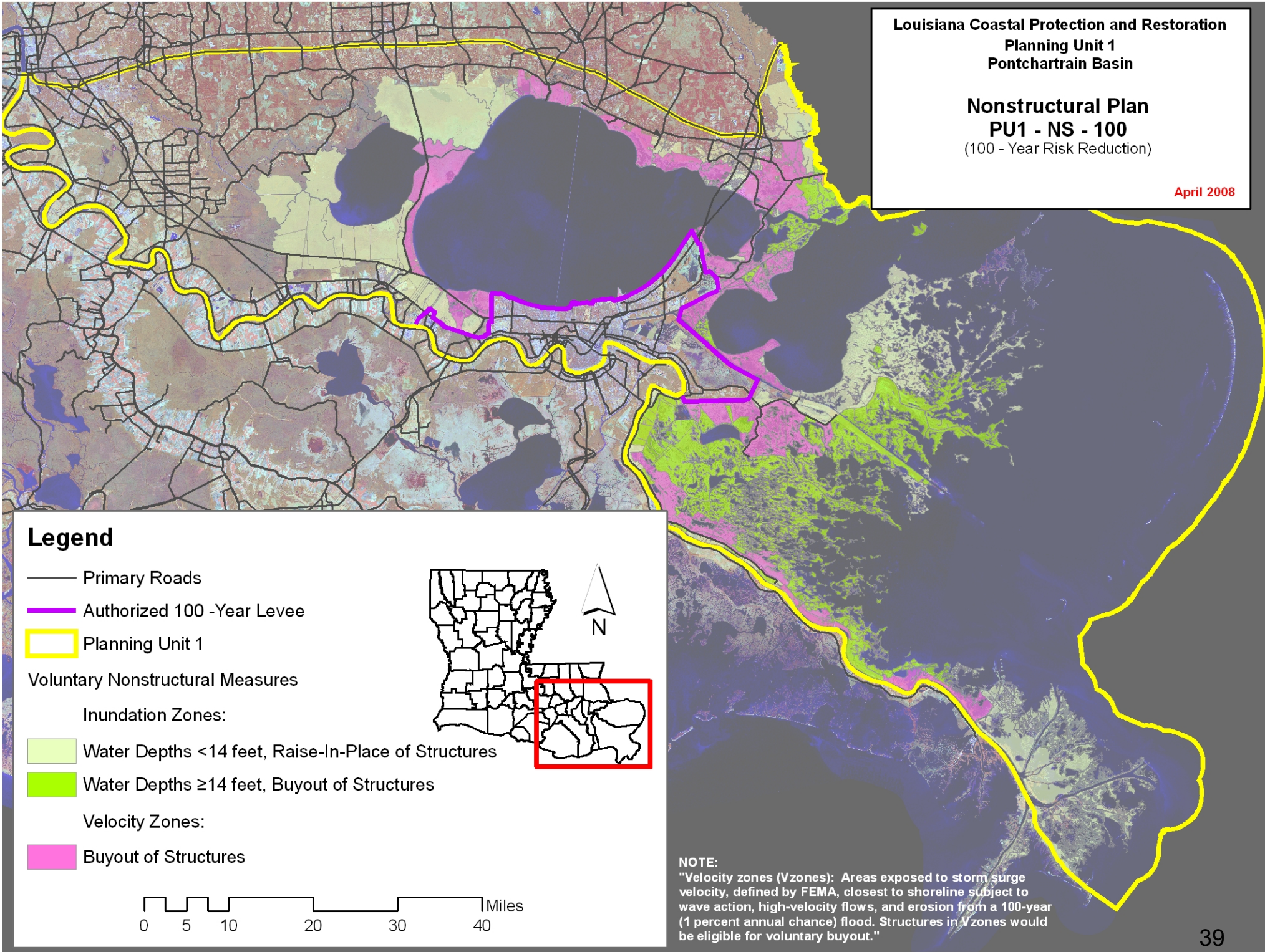
**Louisiana Coastal Protection and Restoration  
 Planning Unit 1  
 Pontchartrain Basin**  
  
**Lake Pontchartrain  
 Surge Reduction Plan  
 PU1 - LP - a - 100 - 1  
 (100-Year Design Level)**

November 2007



**Nonstructural Plan**  
**PU1 - NS - 100**  
(100 - Year Risk Reduction)

April 2008



**Legend**

- Primary Roads
- Authorized 100 -Year Levee
- Planning Unit 1

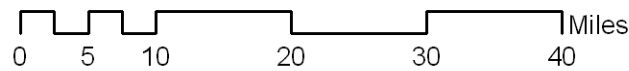
**Voluntary Nonstructural Measures**

**Inundation Zones:**

- Water Depths <14 feet, Raise-In-Place of Structures
- Water Depths  $\geq$ 14 feet, Buyout of Structures

**Velocity Zones:**

- Buyout of Structures

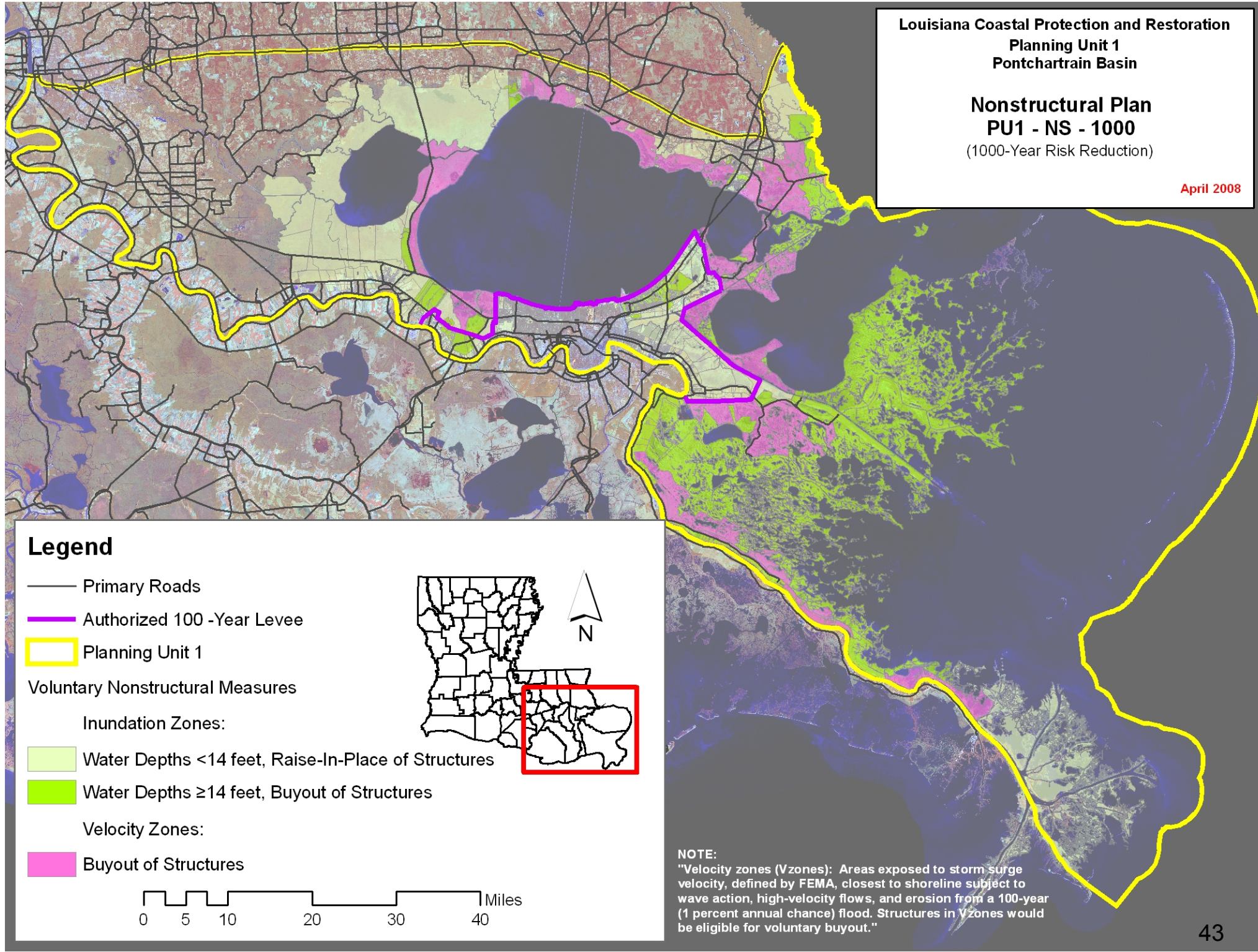


**NOTE:**  
"Velocity zones (Vzones): Areas exposed to storm surge velocity, defined by FEMA, closest to shoreline subject to wave action, high-velocity flows, and erosion from a 100-year (1 percent annual chance) flood. Structures in Vzones would be eligible for voluntary buyout."



**Nonstructural Plan**  
**PU1 - NS - 1000**  
 (1000-Year Risk Reduction)

April 2008



**Legend**

- Primary Roads
- Authorized 100 -Year Levee
- Planning Unit 1

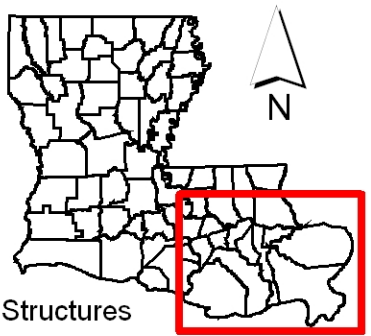
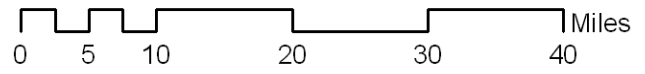
Voluntary Nonstructural Measures

Inundation Zones:

- Water Depths <14 feet, Raise-In-Place of Structures
- Water Depths ≥14 feet, Buyout of Structures

Velocity Zones:

- Buyout of Structures

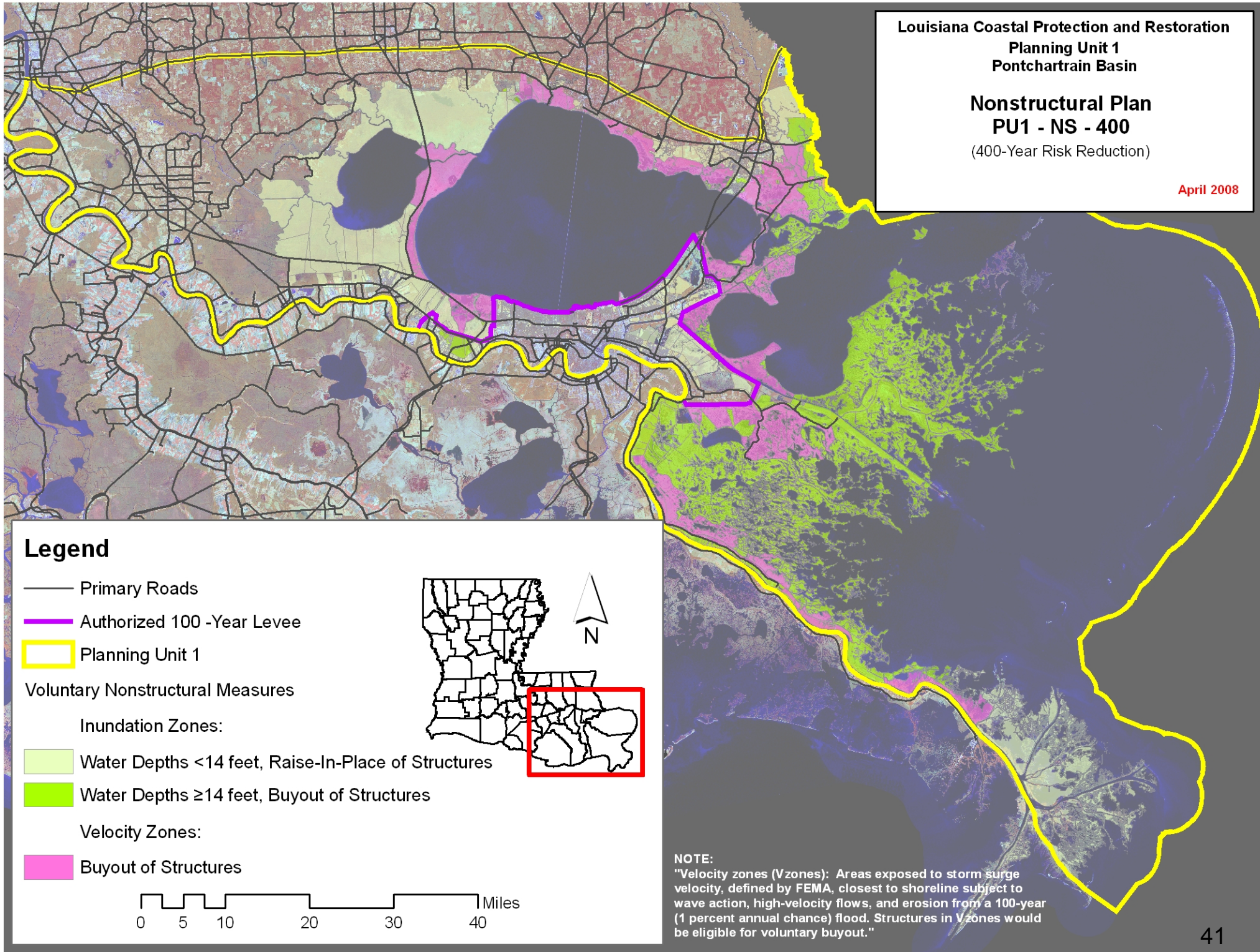


**NOTE:**  
 "Velocity zones (Vzones): Areas exposed to storm surge velocity, defined by FEMA, closest to shoreline subject to wave action, high-velocity flows, and erosion from a 100-year (1 percent annual chance) flood. Structures in Vzones would be eligible for voluntary buyout."



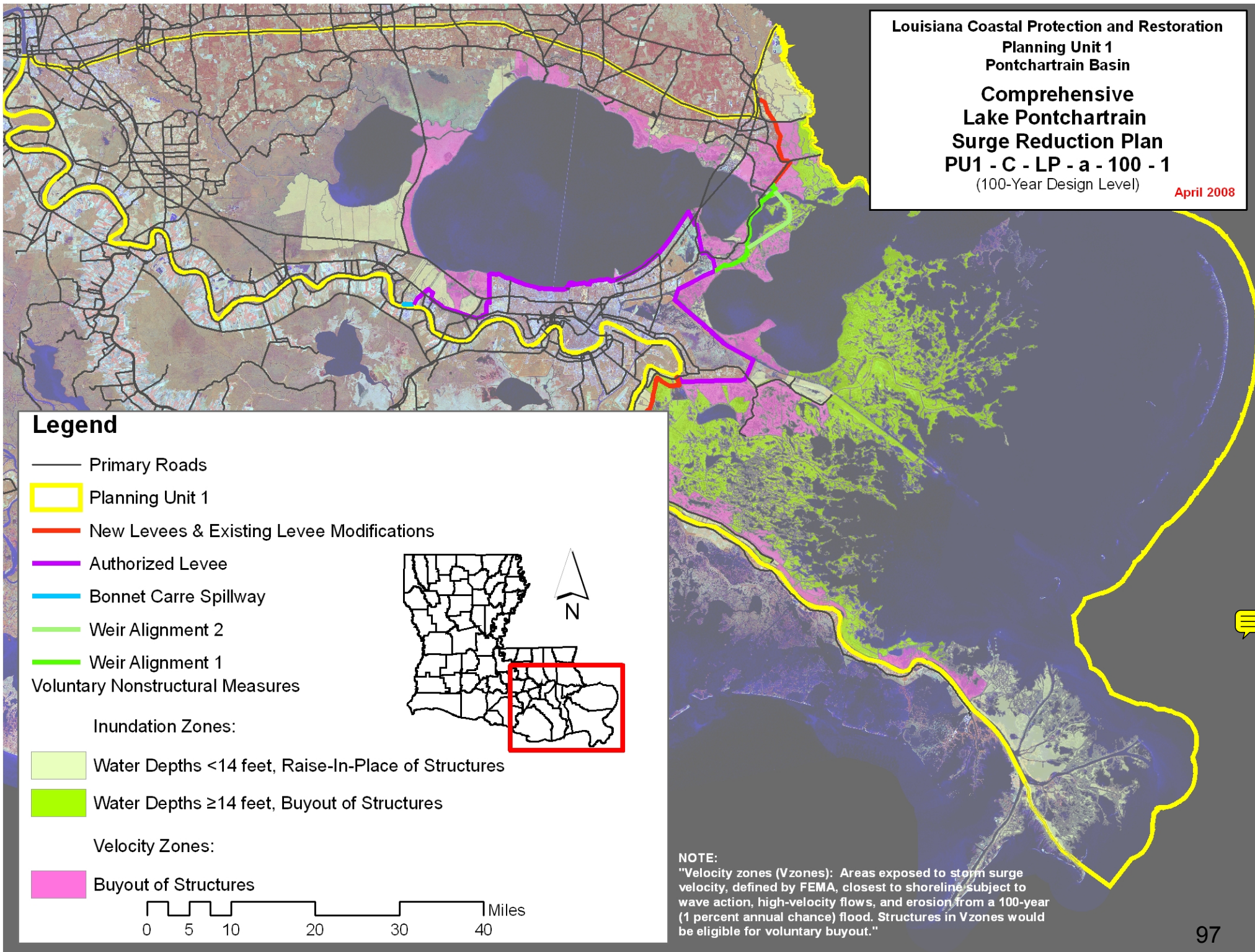
**Nonstructural Plan  
PU1 - NS - 400**  
(400-Year Risk Reduction)

April 2008





Louisiana Coastal Protection and Restoration  
 Planning Unit 1  
 Pontchartrain Basin  
**Comprehensive  
 Lake Pontchartrain  
 Surge Reduction Plan**  
**PU1 - C - LP - a - 100 - 1**  
 (100-Year Design Level) **April 2008**



**Legend**

- Primary Roads
  - Planning Unit 1
  - New Levees & Existing Levee Modifications
  - Authorized Levee
  - Bonnet Carre Spillway
  - Weir Alignment 2
  - Weir Alignment 1
  - Voluntary Nonstructural Measures
  - Inundation Zones:
    - Water Depths <14 feet, Raise-In-Place of Structures
    - Water Depths ≥14 feet, Buyout of Structures
  - Velocity Zones:
    - Buyout of Structures
- 0 5 10 20 30 40 Miles

**NOTE:**  
 "Velocity zones (Vzones): Areas exposed to storm surge velocity, defined by FEMA, closest to shoreline subject to wave action, high-velocity flows, and erosion from a 100-year (1 percent annual chance) flood. Structures in Vzones would be eligible for voluntary buyout."



# Coastal Restoration Plans Planning Units 1 and 2

(Included in all Coastwide Plans)

December 2008

## Legend

- Diversion
- Shoreline Stabilization
- Barrier Island Restoration
- Freshwater Influence
- Marsh Creation
- Planning Unit Boundary

