

COCKROACHES

INSECTA / DICTYOPTERA / BLATTELLIDAE

CLASS / ORDER / FAMILY

GERMAN COCKROACH (*Blattella germanica*)



LIGHT BROWN: 10-15 mm (^{GENUS}.40 - ^{SPECIES}.60 in.)

FEMALE: 37 EGGS

ADULTHOOD: 60-250 DAYS

POTENTIAL: 35,000/YEAR

HABITAT: KITCHENS, PANTRIES, BATHROOMS (NON-FLYERS)

GREGARIOUS & RESISTANT TO SOME INSECTICIDES

AMERICAN COCKROACH (*Periplaneta americana*)



LT-MED BROWN: 35-50 mm (1.4 - 2 in.)

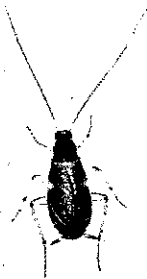
FEMALE: 15 EGGS - 60 EGGS

ADULTHOOD: 320-1000 DAYS

POTENTIAL: 800/YEAR

HABITAT: OUTDOOR (FLYERS), TUFF, SEWER, KITCHENS

BROWN-BANDED COCKROACH (*Supella longipalpa*)



BROWN w/ YELLOW BANDS: 10-15 mm (.40 - .60 in.)

FEMALE: 16 EGGS

ADULTHOOD: 140-380 DAYS

POTENTIAL: 700/YEAR

HABITAT: WIDEST HOUSEHOLD RANGE / NON-GREGARIOUS

ORIENTAL COCKROACH (*Blattella orientalis*)



DK. BROWN - BLACK: 15-20 mm (.60 - .80 in.)

FEMALE: 8 EGGS

ADULTHOOD: 210-990 DAYS

POTENTIAL: 200/YEAR

HABITAT: BASEMENTS, DAMP AREAS (NON-FLYERS) OUTDOORS (TRASH/GARB)